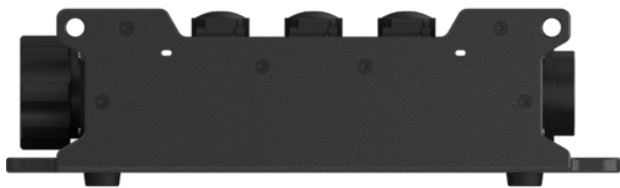




## Power Strip Multicore CPSM-S2-T6

IN: 1 x Socapex 419 compatible – OUT: 6 x  
powerCON® TRUE1® TOP, 1 x Socapex 419 compatible

Power Strip Multicore are extremely rugged and compact distribution boxes which allow significant reduction of the cabling effort and cost due to the multicore inputs. It is ideally suited for outdoor usage and demanding mobile applications. 2 x Socapex 419 compatible In – 6 x powerCON® TRUE1® TOP Out



- ✓ Reduction of cabling volume and effort due to Socapex 419 compatible multipin Input / Daisy-chain.
- ✓ High mechanical protection: Rugged Easylen® housing with high IK, full connector protection with housing elements.
- ✓ Xtreme Outdoor protection: IP65 with Socapex 419 compatible in mated condition, sealing caps
- ✓ Very compact design: Height & Width only 96mm & 150mm due the stepped top plate.
- ✓ Easy transport & handling: stackable, lightweight, fully lockable. Options with the handle on the request.
- ✓ Versatile mounting options: mounting wholes for pegs and suspension, truss clamp

## Market & Application

- ✓ Markets: Professional video wall / lighting / audio
- ✓ Mobile application: Festivals, live events
- ✓ Semi-permanent applications: Theaters, studios

## Ordering information

Article name	Details	Order code
CPSM-S2-T6	IN / Daisy chaining: 2 x Socapex 419 compatible, OUT: 6 x powerCON® TRUE1® TOP	1037504

## Technical Information

<b>Input device</b>	1 x Socapex 419 compatible (6 channels)
<b>Output device</b>	6 x powerCON® TRUE1® TOP with self-closing caps
<b>Daisy chaining</b>	1 x Socapex 419 compatible (6 channels)

<b>Electrical</b>	
<b>Contact resistance / protection class Dielectric strength</b>	Protection class II
<b>Dielectric strength</b>	0,5 kV / mm
<b>Rated voltage</b>	250V AC
<b>Rated Current</b>	16A

<b>Mechanical</b>	
<b>Dimensions</b>	150 x 95,25 x 330mm
<b>Weight</b>	
<b>Conductor cross section</b>	2,08 mm <sup>2</sup>
<b>Mounting options</b>	Truss clamp (M10), mounting wholes for pegging or suspension
<b>Type of construction</b>	Stackable

<b>Material</b>	
<b>Housing</b>	Easylen
<b>Color</b>	black

Flammability acc. to UL 94	V-2
Protection class	IP65 with Socapex 419 compatible connector in mated condition
Temperature range	-25 °C bis +40 °C