

IKA

designed for scientists

EN



QUIET AND USER-FRIENDLY

Passionately enabling chemists to create a better world since 1910.
From A to Z.

SHAKERS MADE BY IKA.

Shakers

/// World in motion!

For over a century, IKA has been leading the way with innovative technologies and applications in the field of laboratory, analytical and process equipment.

In 1925, IKA first produced the conventional shaker and displayed this entire product line at ACHEMA. To give our loyal customers a leading edge, IKA has ensured that new product innovation has been introduced time and time again. And once again, IKA has completely revamped its' shaker line by incorporating advanced technology with unique designs. As always, we continue our 100 year old tradition of bringing design, innovation, ease of use and commitment to our customers!

IKA already has a line of well known and proven orbital and horizontal shakers. IKA is proud to introduce a brand new series of Rollers, Rockers and Overhead Rotators. The wide range of Rocking, Rolling, Rotating and Shaking covers the entire spectrum of motions in mixing technology. All new devices are available in a basic and digital version. IKA has also added a sibling to its' voluminous incubator shaker KS 4000 i control and ic control. The expanded product range facilitates the use of our equipment in a wider range of applications, especially in the medical and biological field. The hallmark of IKA, exceptional design, innovation, quality, high efficiency, smooth operation and excellent performance continues as it has for 100 years!

3-YEAR WARRANTY*
*2+1 years after registering at www.ika.com/en/register, glassware and wearing parts excluded



Find out more about IKA and order our fascinating products online: www.ika.com.

<p>4 /// SHAKERS OVERVIEW</p>	<p>6 /// SHAKERS WITH VORTEX MOTION</p>
<p>12 /// SHAKERS WITH ORBITAL MOTION</p>	<p>16 /// SHAKERS WITH RECIPROCATING MOTION</p>
<p>18 /// INCUBATOR SHAKERS WITH ORBITAL MOTION</p>	<p>22 /// SHAKERS WITH ROTATING MOTION</p>
<p>26 /// SHAKERS WITH ROCKING MOTION</p>	<p>28 /// SHAKERS WITH ROCKING AND ROLLING MOTION</p>
<p>30 /// TECHNICAL DATA</p>	<p>40 /// ACCESSORIES</p>
<p>58 /// SHAKERS VESSEL CAPACITY</p>	<p>62 /// SELECT YOUR IDEAL SHAKER</p>
<p>64 /// SOFTWARE</p>	<p>65 /// IKA SERVICE</p>

Shakers

/// Overview

IKA offers a wide range of lab shakers for mixing and shaking applications. Products are equipped with digital display, timer function, and controlling options via the lab software labworldsoft.

Integrated end point positioning allows for automated sampling. An extensive array of attachments is available for the use of different vessels.

ORBITAL

- VXR basic Vibrax (R)
- MTS 2/4 digital Microtiter shaker
- KS 130 basic | control
- KS 260 basic | control
- KS 501 digital
- KS 3000 i | ic control
- KS 4000 i | ic control

ROTATING

- Trayster basic | digital
- Lopster basic | digital

ROCKING

- Rocker 2D basic | digital
- Rocker 3D basic | digital

VORTEX

- lab dancer
- Vortex 1
- Vortex 2
- Vortex 3
- Vortex 4 basic
- MS 3 basic | digital

RECIPROCATING

- HS 260 basic | control
- HS 501 digital

ROCKING AND ROLLING

- Roller 6 basic | digital
- Roller 10 basic | digital

lab dancer

/// Small, compact and reliable

Attractively designed, test tube shaker with fixed speed.
Designed for mixing small test samples with a touch function.

LAB DANCER

- › for small containers up to 30 mm in diameter, e.g. test tubes, centrifuge tubes, Eppendorf beakers
- › fixed speed (2.800 rpm)
- › excellent mixing action
- › The upper casing and the test tube surface are made from inert plastic. The bottom section is a coated, zinc die-casting

BESTSELLER



Vortex 1

/// Adjustable speed

Test tube shaker with touch function and adjustable speed range.
Designed for test samples of up to 30 mm.






VORTEX 1

- › infinitely adjustable speed from 1.000 to 2.800 rpm

Vortex 2

/// For touch operation or continuous operation

BESTSELLER

-  Continuous or touch operation.
-  Wide range of attachments.
-  Orbital action.



VORTEX 2

- › touch function
- › suitable for continuous operation
- › stable operation at high speeds due to silicon base feet
- › infinitely adjustable speed range
- › wide range of attachments for various applications
- › sturdy metal die cast housing

Vortex 3

/// Vortex mixer

HANDS
FOR CHILDREN
by IKA



VORTEX 3

- › touch function
- › orbital action
- › wide speed range enables intensive mixing, even for small vessels
- › different applications easily handled with interchangeable attachments and inserts

Vortex 4 basic

/// Compact, universal small shaker

The Vortex 4 shaker is suitable for shaking tasks with small vessels and microtiter plates.



Wide range of attachments.



Attachment detection.



Continuous or touch operation (with standard attachment).



Two operating modes.

MS 3 basic | digital | control

/// Sturdy, yet so versatile

With the introduction of the MS 3 control, IKA is extending its range from entry-level shaking tasks to a device that is integrateable in various sample preparation processes.



Stable in all speed ranges.



Sturdy zinc die cast casing.



User-friendly interface.



Integrated timer function.



RS 232 interface.



labworldsoft® ready.

MS 3 CONTROL



MS 3 BASIC



MS 3 DIGITAL

VXR basic Vibrax (R)

/// Electronically controlled shaker

The VXR Vibrax has a very wide speed range (0 – 2.200 rpm) and wide application field due to different attachments.



VXR BASIC VIBRAX (R)

- > suitable for continuous operation
- > improved drive system
- > circular shaking motions
- > slow speeds are well maintained
- > attachments are interchangeable

MTS 2/4 digital Microtiter shaker

/// Shaking two or four microtiter plates

Special shaker for the orbital shaking of two or four microtiter plates.



Digital timer.



Alarm to indicate set time has expired.

Orbital shaker series KS

/// Small footprint

The HS reciprocating or KS orbital shakers ensure long life with ideal swivel motion for different loads.



KS 130 BASIC



KS 130 CONTROL



KS 260 BASIC



KS 260 CONTROL



KS 501 DIGITAL



Electronic adjustment
of speed and timer.



Wide range of attachment combinations allows
for almost all shapes and sizes of vessels.

Horizontal shaker series HS

/// Proven and reliable

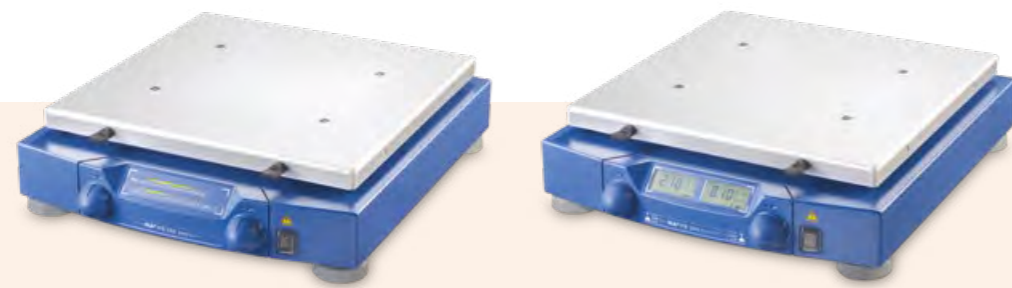
HS 260 BASIC

- › electronic adjustment of speed and timer
- › LED display for speed and time adjustment
- › wide range of attachment combinations makes it possible to use almost all shapes and sizes of vessels
- › attachments are not included in delivery, please order separately

HS 260 CONTROL

Additional to the basic version:

- › digital display makes it possible to read the speed, timer function and operating modes
- › electronic time switching clock: 0 - 9 h 59min or continuous operation (endless)
- › with integrated endpoint positioning (for automated robot-controlled sampling)
- › all functions can be controlled and documented with labworldsoft® software



HS 501 DIGITAL

- › infinitely variable speed control from 0 – 300 rpm
- › digital speed display
- › ideal for all lying vessels, e.g. separating funnels
- › continuous operation (endless) even under extreme loads
- › timer
- › attachments are not included, please order separately
- › integrated USB and RS 232 interfaces

BESTSELLER



KS 3000 i control | ic control

/// Incubator shakers

The KS 3000 series is the latest addition to the incubator shaker family. These sleek, compact, high-performance shakers are designed for safe, unattended operation in a temperature-controlled environment. Additionally, KS 3000 ic control is equipped with a built-in cooling coil for connection to an external cooling unit. Precise temperature control makes the incubator shaker a reliable asset in every lab, ensuring quiet, vibration-free and reliable operation - an excellent device for controlled mixing!



KS 3000 IC CONTROL



KS 3000 I CONTROL



Assure highly accurate **temperature control**.



Wide range of attachments allows for using almost all shapes and sizes of vessels.



Built-in cooling coil for connection to an external cooling unit (available only for KS 3000 ic control).



Large LED display for speed, temperature and timer.



2 years + 1 year following registration at www.ika.com/en/register.



USB interface to control and document all parameters using labworldsoft® software and for updating your firmware.

KS 4000 i control | ic control

/// Incubator shakers

Innovative incubator shaker design allowing unattended operation in a temperature-controlled environment.



ORBITAL ACTION

KS 4000 IC CONTROL



KS 4000 I CONTROL



All functions can be controlled and documented with labworldsoft®.



Optional built-in cooler for connection to an external cooling unit.

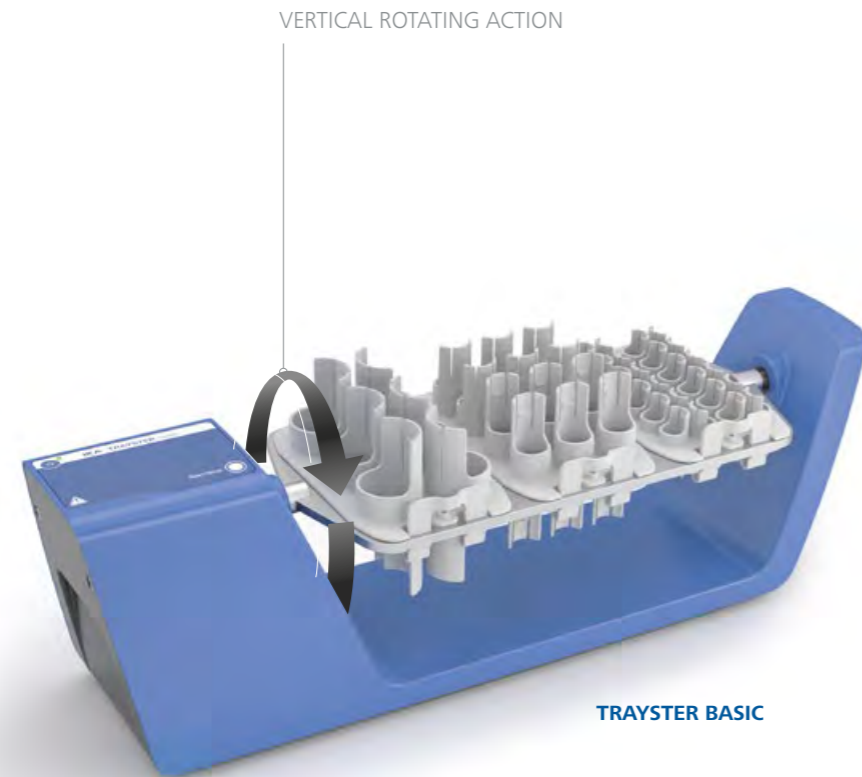


Unit stops automatically when hood is lifted.

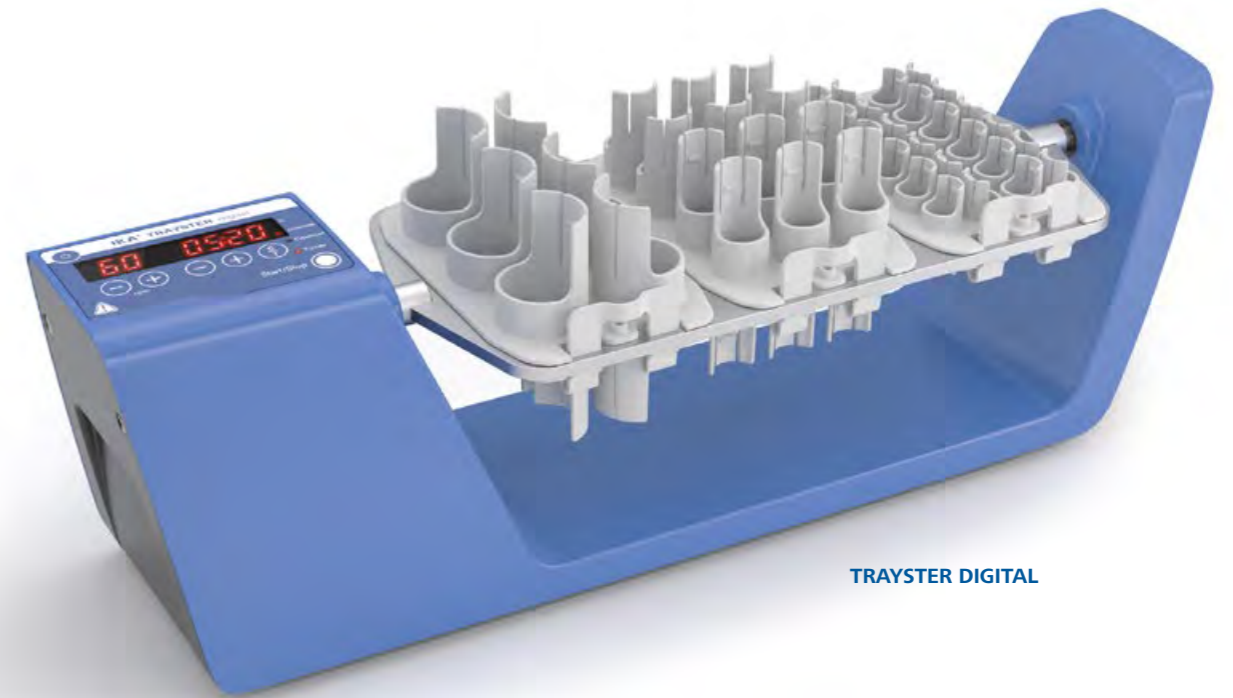
Trayster basic | digital

/// Upside down and up

Overhead shakers with vertical rotating action for smooth and effective mixing at fixed or infinitely adjustable speed. Ideal for biological samples, particularly blood and suitable for the separating and mixing of powdered and liquid samples in tubes of up to 50 ml. Easily removable attachments provide for quick cleaning in case of sample spills.



TRAYSTER BASIC



TRAYSTER DIGITAL



Three easily interchangeable tray inserts.



Touch keypad for easy operation.



Vertical rotating action.



C/T button for choosing the counter or the timer function.



2 years + 1 year following registration at www.ika.com.



Timer display for accurate and reproducible conditions.

Loopster basic | digital

/// Spin it right round

Rotate your samples smoothly and effectively, at fixed or infinitely variable speeds with freely adjustable rotary angles. Ideal for biological samples, particularly blood samples and also suitable for separating and mixing of powdered and liquid samples in multiple tube sizes as large as 50 ml conical tubes. Easily removable attachments provide for quick cleaning in case of sample spills.





LOOPSTER BASIC


BESTSELLER





LOOPSTER DIGITAL


- 

Choice of tube holders to hold a number of different sized tubes.
- 

Touch keypad for easy operation.
- 

90 degree adjustable mixing angle.
- 

C/T button for choosing the counter or the timer function.
- 

2 years + 1 year following registration at www.ika.com.
- 

Timer display for accurate and reproducible conditions.

Rocker shaker series

/// 2D and 3D basic | digital

The brand new range of 2D and 3D Rockers provide gentle rocking/see-saw action and are used for homogenous mixing in flasks, culture flasks, Petri dishes and tubes. The compact, small footprint and dual platform saves valuable bench space and facilitates easy-handling. Even with load and voltage fluctuations, shaking speeds remain constant. Precision in speed (available in fixed and variable) and adjustable tilt angle allow for a variety of applications.



ROCKER 2D BASIC



ROCKER 2D DIGITAL



Two-dimensional rocking/see-saw motion.



Timer display for accurate and reproducible conditions.



2 years + 1 year following registration at www.ika.com.



Three-dimensional tumbling rocking/see-saw motion.



C/T button for choosing the counter or the timer function.



Touch keypad for easy operation.

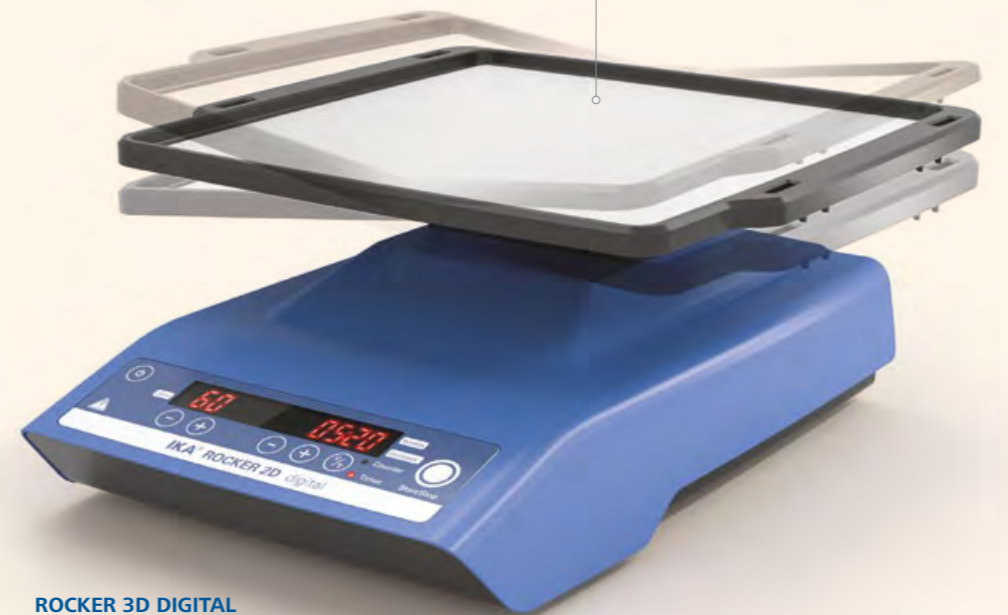


Dual platform option expands workspace.



ROCKER 3D BASIC

ROCKING ACTION.



ROCKER 3D DIGITAL

Roller shaker series

/// Smart and safe mixing

Gentle mixing applications demand smooth rocking and rolling action. Our 6 and 10 Rollers, operated at fixed and infinitely adjustable speed deliver this requirement efficiently. Easily removable attachments provide for quick cleaning in case of sample spills. Removable rollers allow for the use of larger tubes. Truly, a Rock n' Roll experience in the laboratory!



Touch keypad for easy operation.



C/T button for choosing the counter or the timer function.



2 years + 1 year following registration at www.ika.com.



Timer display for accurate and reproducible conditions.



ROLLER 6 BASIC



ROLLER 6 DIGITAL

ROCKING AND ROLLING ACTION



ROLLER 10 DIGITAL

EASILY REMOVABLE ROLLS allow the use of larger tubes.



ROLLER 10 BASIC

Technical data

/// Vortex shakers

TECHNICAL DATA /// Comparison		lab dancer Ident. No. 0003365000	Vortex 1 Ident. No. 0004047700
Type of movement		orbital	orbital
Shaking diameter		4,5 mm	4,5 mm
Permissible shaking weight (incl. attachment)		max. 50 ml (1 test tube)	0,1 kg
Motor rating input/output		1,2/0,8 W	1,2/0,8 W
Permissible ON time		100 %	100 %
Speed range		2.800 rpm (fixed)	1.000 – 2.800 rpm
Speed display		no	no
Timer		no	no
Timer display		no	no
Operating mode		touch operation	touch operation
Dimensions (W x D x H)		100 x 70 mm (Ø x H)	95 x 110 x 70 mm
Weight		0,55 kg	0,55 kg
Permissible ambient temp.		5 – 40 °C	5 – 40 °C
Permissible relative moisture		80 %	80 %
Protection class acc. to DIN EN 60529		IP 40	IP 40
Interface		no	no
Voltage		100 – 240 V	100 – 240 V
Frequency		50/60 Hz	50/60 Hz
		€ 257,00	€ 278,00




TECHNICAL DATA /// Comparison		Vortex 2 Ident. No. 0025000258	Vortex 3 Ident. No. 0003340000	Vortex 4 basic Ident. No. 0004049600
Type of movement		orbital	orbital	orbital
Shaking diameter		4 mm	4 mm	4,5 mm
Permissible shaking weight (incl. attachment)		0,4 kg	0,4 kg	0,5 kg
Motor rating input/output		39/9 W	58/10 W	10/8 W
Permissible ON time		100 %	100 %	100 %
Speed range		500 – 2.500 rpm	500 – 2.500 rpm	0 – 3.000 rpm
Speed display		scale 0 – 6	scale 0 – 6	scale
Timer		no	no	no
Timer display		no	no	no
Operating mode		continuous/ touch operation	continuous/ touch operation	continuous operation/ touch operation
Dimensions (W x D x H)		120 x 138 x 140 mm	127 x 149 x 136 mm	176 x 190 x 63 mm
Weight		3,9 kg	4,5 kg	3 kg
Permissible ambient temp.		5 – 40 °C	5 – 40 °C	5 – 40 °C
Permissible relative moisture		80 %	80 %	80 %
Protection class acc. to DIN EN 60529		IP 21	IP 21	IP 21
Interface		no	no	no
Voltage		230 V	230 V	100 – 240 V
Frequency		50/60 Hz	50/60 Hz	50/60 Hz
		€ 219,00	€ 367,00	€ 381,00

Technical data

/// Shakers with orbital motion

 TECHNICAL DATA /// Comparison		
	MS 3 basic digital Ident. No. 0003617000 0003319000	MS 3 control Ident. No. 0020016017
Type of movement	orbital	orbital
Shaking diameter	4,5 mm	4,5 mm
Permissible shaking weight (incl. attachment)	0,5 kg	0,5 kg
Motor rating input/output	10/8 W	10/8 W
Permissible ON time	100 %	100 %
Speed range	200 – 3.000 rpm	100 – 3.000 rpm
Speed display	scale digital	digital
Timer	no 1/60 min – 999 min	1/60 min – 999 min
Timer display	no digital	LCD
Operating mode	continuous/ touch operation timer and continuous/ touch operation	timer and continuous / touch operation
Dimensions (W x D x H)	148 x 205 x 63 mm	148 x 205 x 63 mm
Weight	2,9 kg	2,9 kg
Permissible ambient temp.	5 – 40 °C	5 – 40 °C
Permissible relative moisture	80 %	80 %
Protection class acc. to DIN EN 60529	IP 21	IP 21
Interface	no	no
Voltage	100 – 240 V	100 – 240 V
Frequency	50/60 Hz	50/60 Hz
	€ 533,00 € 731,00	€ 829,00

 TECHNICAL DATA /// Comparison	
	MTS 2/4 digital Microtiter shaker Ident. No. 0003208000
Type of movement	orbital
Shaking diameter	3 mm
Permissible shaking weight (incl. attachment)	2 or 4 microtiter plates (MTP)
Motor rating input/output	35/13,2 W
Permissible ON time	100 %
Speed range	0 – 1.100 rpm
Speed display	scale
Timer	∞ / 1 – 99 min
Timer display	digital
Operating mode	timer and continuous operation
Dimensions (W x D x H)	185 x 320 x 105 mm
Weight	2,7 kg
Permissible ambient temp.	5 – 40 °C
Permissible relative moisture	80 %
Protection class acc. to DIN EN 60529	IP 21
Interface	no
Voltage	230 V
Frequency	50/60 Hz
	€ 1.457,00

Technical data

/// Incubator shakers

 TECHNICAL DATA /// Comparison			
	KS 130 basic control Ident. No. 0002980000 Ident. No. 0002980100	KS 260 basic control Ident. No. 0002980200 Ident. No. 0002980300	KS 501 digital Ident. No. 0025002985
Type of movement	orbital	orbital	orbital
Shaking diameter	4 mm	10 mm	30 mm
Permissible shaking weight (incl. attachment)	2 kg	7,5 kg	15 kg
Motor rating input/output	45/10 W	45/10 W	70/19 W
Permissible ON time	100 %	100 %	100 %
Speed range	80 – 800 rpm	50 – 500 rpm 10 – 500 rpm	0 – 300 rpm
Speed display	LED line digital	LED line digital	7 Segment LED
Timer	∞/5 – 50 min ∞/0 – 9 h 59 min	∞/5 – 50 min ∞/0 – 9 h 59 min	∞/1 – 56 min
Timer display	LED line digital	LED line digital	scale
Operating mode	Timer and continuous operation	Timer and continuous operation	Timer and continuous operation
Dimensions (W x D x H)	270 x 316 x 98 mm	360 x 420 x 98 mm	505 x 585 x 120 mm
Weight	8,8 kg	8,5 kg 8,8 kg	26 kg
Permissible ambient temp.	5 – 50 °C	5 – 50 °C	5 – 50 °C
Permissible relative moisture	80 %	80 %	80 %
Protection class acc. to DIN EN 60529	IP 21	IP 21	IP 21
Interface	no RS 232	no RS 232	USB and RS232
Voltage	230 V	230 V	230 V
Frequency	50/60 Hz	50/60 Hz	50/60 Hz
	€ 1.449,00 € 2.169,00	€ 2.299,00 € 2.999,00	€ 4.449,00

 TECHNICAL DATA /// Comparison		
	KS 3000 i control ic control Ident. No. 0003940000 Ident. No. 0003940100	KS 4000 i control ic control Ident. No. 0003510000 Ident. No. 0003510100
Type of movement	orbital	orbital
Shaking diameter	20 mm	20 mm
Permissible shaking weight (incl. attachment)	7,5 kg	20 kg
Motor rating input/output	45/10 W	82/24 W
Power input	1.120 W	1.120 W
Permissible ON time	100 %	100 %
Speed range	10 – 500 rpm	10 – 500 rpm
Speed display	LED	LED
Heating temperature range	RT +5 – 80 °C RT -10 – 80 °C	RT +5 – 80 °C RT -10 – 80 °C
Timer	∞/1 – 99 min	∞/1 – 99 min
Timer display	LED	LED
Time setting range	1 s – 999 h	1 s – 999 h
Operating mode	Timer and continuous operation	Timer and continuous operation
Heat output	1.000 W	1.000 W
Temperature display	LED	LED
Temp. stability (0.2 l H ₂ O; RT 25°C, T = 37°C)	± 0,1 K	± 0,1 K
Dimensions (W x D x H)	465 x 695 x 430 mm	580 x 750 x 525 mm
Weight	35 kg 37 kg	50 kg 55 kg
Permissible ambient temperature	15 – 32 °C	15 – 32 °C
Permissible relative moisture	80 %	80 %
Protection class acc. to DIN EN 60529	IP 30	IP 30
Interface	USB and RS232	RS 232
Voltage	230 V	230 V
Frequency	50/60 Hz	50/60 Hz
Built-in cooling coil	no yes	no yes
	€ 4.999,00 € 5.999,00	€ 6.049,00 € 7.049,00

Technical data

/// Horizontal shaker series

TECHNICAL DATA /// Comparison		
	HS 260 basic control Ident. No. 0003066600 Ident. No. 0003066700	HS 501 digital Ident. No. 0025002982
Type of movement	reciprocating	reciprocating
Shaking diameter	20 mm	30 mm
Permissible shaking weight (incl. attachment)	7,5 kg	15 kg
Motor rating input/output	45/10 W	70/19 W
Permissible ON time	100 %	100 %
Speed range	20 – 300 rpm 10 – 300 rpm	0 – 300 rpm
Speed display	LED line digital	7 Segment LED
Timer	∞/5 – 50 min ∞/0 – 9 h 59 min	∞/1 – 56 min
Timer display	LED line digital	scale
Operating mode	Timer and continuous operation	Timer and continuous operation
Dimensions (W x D x H)	360 x 420 x 100 mm	505 x 120 x 585 mm
Weight	8,5 kg 8,8 kg	26 kg
Permissible ambient temp.	5 – 50 °C	5 – 50 °C
Permissible relative moisture	80 %	80 %
Protection class acc. to DIN EN 60529	IP 21	IP 21
Interface	no RS 232	USB and RS232
Voltage	230 V	230 V
Frequency	50/60 Hz	50/60 Hz
	€ 2.299,00 € 2.999,00	€ 4.449,00



Technical data


/// Rotating shaker series

TECHNICAL DATA /// Comparison		
	Trayster basic digital Ident. No. 0004005000* Ident. No. 0004006000*	Loopster basic digital Ident. No. 0004015000* Ident. No. 0004016000*
Type of movement	rotating, vertical or horizontal	rotating, adjustable from horizontal to vertical
Permissible shaking weight (incl. attachment)	2 kg	2 kg
Motor rating input/output	16/9 W	16/9 W
Permissible ON time	100 %	100 %
Speed range	20 rpm (fixed) 5 – 80 rpm	20 rpm (fixed) 5 – 80 rpm
Speed display	no 7 segment LED	no 7 segment LED
Timer	no ∞/1 s – 99,9 h	no ∞/1 s – 99,9 h
Timer display	no 7 segment LED	no 7 segment LED
Operating mode	continuous operation timer and continuous operation	continuous operation timer and continuous operation
Dimensions (W x D x H)	460 x 140 x 180	300 x 300 x 360 mm
Weight	1,6 kg	3 kg
Permissible ambient temp.	4 – 50 °C	4 – 50 °C
Permissible relative moisture	80 %	80 %
Protection class acc. to DIN EN 60529	IP 21	IP 21
Interface	no	no
Voltage	100 – 240 V	100 – 240 V
Frequency	50/60 Hz	50/60 Hz
DC Voltage	24 V	24 V
	€ 749,00 € 849,00	€ 649,00 € 749,00

* Loopster and Trayster accessories have to be ordered separately.

Technical data

/// Rocker shaker series

 TECHNICAL DATA /// Comparison			
	Rocker 2D basic digital Ident. No. 0004002000 Ident. No. 0004003000	Rocker 3D basic digital Ident. No. 0004000000 Ident. No. 0004001000	
Type of movement	rocking	tumbling	
Shaking diameter	8° 2,5 – 15° (angle)	8° 0 – 15° (angle)	
Permissible shaking weight (incl. attachment)	2 kg	2 kg	
Motor rating input/output	16/9 W	16/9 W	
Permissible ON time	100 %	100 %	
Speed range	5 – 80 rpm	30 rpm (fixed) 5 – 80 rpm	
Speed display	7 segment LED	no 7 segment LED	
Timer	no ∞/1 s – 99,9 h	no ∞/1 s – 99,9 h	
Timer display	no 7 segment LED	no 7 segment LED	
Operating mode	continuous operation timer and continuous operation	continuous operation timer and continuous operation	
Dimensions (W × D × H)	280 × 330 × 150 mm	280 × 330 × 165 mm 280 × 330 × 185 mm	
Weight	2,2 kg	2,2 kg 2,3 kg	
Permissible ambient temp.	4 – 50 °C	4 – 50 °C	
Permissible relative moisture	80 %	80 %	
Protection class acc. to DIN EN 60529	IP 21	IP 21	
Interface	no	no	
Voltage	100 – 240 V	100 – 240 V	
Frequency	50/60 Hz	50/60 Hz	
DC Voltage	24 V	24 V	
	€ 749,00 € 849,00	€ 799,00 € 899,00	

Technical data

/// Roller shaker series

 TECHNICAL DATA /// Comparison			
	Roller 6 basic digital Ident. No. 0004010000 Ident. No. 0004011000	Roller 10 basic digital Ident. No. 0004012000 Ident. No. 0004013000	
Type of movement	rocking and rolling	rocking and rolling	
Shaking diameter	24,5 mm (high)	24,5 mm (high)	
Permissible shaking weight (incl. attachment)	2 kg	2 kg	
Motor rating input/output	16/9 W	16/9 W	
Permissible ON time	100 %	100 %	
Speed range	30 rpm (fixed) 5 – 80 rpm	30 rpm (fixed) 5 – 80 rpm	
Speed display	no 7 segment LED	no 7 segment LED	
Timer	no ∞/1 s – 99,9 h	no ∞/1 s – 99,9 h	
Timer display	no 7 segment LED	no 7 segment LED	
Operating mode	continuous operation timer and continuous operation	continuous operation timer and continuous operation	
Dimensions (W × D × H)	240 × 545 × 115	380 × 545 × 115 mm	
Weight	4 kg	6 kg	
Permissible ambient temp.	4 – 50 °C	4 – 50 °C	
Permissible relative moisture	80 %	80 %	
Protection class acc. to DIN EN 60529	IP 21	IP 21	
Interface	no	no	
Voltage	100 – 240 V	100 – 240 V	
Frequency	50/60 Hz	50/60 Hz	
DC Voltage	24 V	24 V	
	€ 1.299,00 € 1.399,00	€ 1.599,00 € 1.699,00	

Accessories

/// Vortex shakers

ACCESSORIES
/// Comparison

	Description	Price
Vortex 2/Vortex 3 accessories		
①	VG 3.1 Ident. No. 0003341200 Standard attachment for reagent glasses/small vessels (continuous/touch operation), included with delivery.	€ 9,00
②	VG 3.2 Ident. No. 0003342300 One-hand attachment, 88 mm, round, with rubber insert (continuous/touch operation).	€ 20,00
	VG 3.21 Ident. No. 0020008398 Rubber pad For use with VG 3.2 One-hand attachment.	€ 13,00
③	VG 3.3 Ident. No. 0003342400 Universal attachment Universal attachment, 150 mm, with rubber insert (continuous operation).	€ 22,00
④	VG 3.30 Ident. No. 0025005779 Test tube attachment For 96 PCR tubes 0,2 ml .	€ 25,00
⑤	VG 3.31* Ident. No. 0003344300 Test tube attachment For 54 Eppendorf tubes (continuous operation).	€ 56,00
⑥	VG 3.32* Ident. No. 0003343900 Test tube attachment For 18 reagent glasses, Ø 10 mm (continuous operation).	€ 29,00
⑦	VG 3.33* Ident. No. 0003344000 Test tube attachment For 12 reagent glasses, Ø 12 mm (continuous operation).	€ 29,00
⑧	VG 3.34* Ident. No. 0003344100 Test tube attachment For 8 reagent glasses, Ø 16 mm (continuous operation).	€ 29,00
⑨	VG 3.35* Ident. No. 0003344200 Test tube attachment For 8 reagent glasses, Ø 20 mm (continuous operation).	€ 29,00
⑩	VG 3.36* Ident. No. 0003342100 Erlenmeyer flask attachment For 1 Erlenmeyer/round flask from 100 to 250 ml (continuous operation).	€ 29,00
⑪	VG 3.37* Ident. No. 0003344400 Microtiter plate attachment For 1 standard microtiter plate (continuous operation).	€ 29,00

* Used with VG 3.3 universal attachment, ordered separately.



Accessories

/// MS 3 shakers

ACCESSORIES		
/// Comparison		
	Description	Price
MS 3 basic/digital accessories		
12	MS 3.1 Ident. No. 0003426300	Standard attachment For test tubes and small vessels up to Ø 50 mm, included with the minishakers MS 3 basic and MS 3 digital. € 15,00
13	MS 3.3 Ident. No. 0003426600	Universal attachment For various foam inserts, included with the minishakers MS 3 basic and MS 3 digital. € 15,00
14	MS 1.21 Ident. No. L001540	One-hand insert For inserting into the universal attachment, included with the minishakers MS 3 basic and MS 3 digital. € 20,00
15	MS 1.30 Ident. No. 0025005776	Test tube insert For 0,5 ml tubes. € 43,00
16	MS 1.31 Ident. No. L001840	Test tube insert For inserting into universal attachment, for 14 test tubes Ø 10 mm, material: ethylvinyl-acetate. € 45,00
17	MS 1.32 Ident. No. L001850	Test tube insert For inserting into the universal attachment, for 6 test tubes Ø 12 mm. Material: ethylvinyl-acetate. Included with the minishakers MS 3 digital. € 45,00
18	MS 1.33 Ident. No. L001860	Test tube insert For inserting into the universal attachment, for 4 test tubes Ø 16 mm. Material: ethylvinyl-acetate. € 45,00
19	MS 1.34 Ident. No. L001830	Test tube insert For inserting into the universal attachment, for any number of bore holes. Material: ethylvinyl-acetate. € 21,00
20	MS 3.4 Ident. No. 0003426400	Microtiter plate attachment For use with a microtiter plate, included with the minishaker MS 3 digital. € 45,00
21	MS 3.5 Ident. No. 0003428000	PCR plate attachment For holding PCR plates, 96-well. Includes holder and insert. € 45,00



Accessories

/// VXR basic Vibrax (R)



VX 11.1 TEST TUBE INSERT

Attachment for Eppendorf tubes or test tubes.

Details

VX 11.1, Ident. No. 0003659000

Bore holes (number)	70
Hole Ø	10 mm

€ 129,00



VX 11.2 TEST TUBE INSERT

Attachment for test tubes.

Details

VX 11.2, Ident. No. 0003659100

Bore holes (number)	41
Hole Ø	12 mm

€ 129,00



VX 11.3 TEST TUBE INSERT

Attachment for test tubes.

Details

VX 11.3, Ident. No. 0003659200

Bore holes (number)	32
Hole Ø	16 mm

€ 99,00



VX 11.4 TEST TUBE INSERT

Attachment for test tubes.

Details

VX 11.4, Ident. No. 0003659300

Bore holes (number)	18
Hole Ø	20 mm

€ 99,00



VX 11.5 TEST TUBE INSERT

Attachment for 50 ml tubes.

Details

VX 11.5, Ident. No. 0025005778

Bore holes (number)	24
Hole Ø	12 mm

€ 89,00



VX 11.6 TEST TUBE INSERT

Attachment for 30 ml tubes.

Details

VX 11.6, Ident. No. 0025005777

Bore holes (number)	8
Hole Ø	27,5 mm

€ 89,00



VX 2E "EPPENDORF" ATTACHMENT

For intensive mixing of up to 64 "microcentrifuge" tubes (1.5 ml).

Details

VX 2E, Ident. No. 0001618100

Dimensions (W x D x H)	210 x 210 x 65 mm
Weight	790 g

€ 359,00



VX 7 DISH ATTACHMENT

For careful mixing of culture bottles, Petri dishes, etc.

Details

VX 7, Ident. No. 0000953300

Dimensions (W x D x H)	410 x 210 x 40 mm
Weight	740 g

€ 249,00



VX 8 UNIVERSAL ATTACHMENT

For rapid and secure clamping, e.g. 2 Erlenmeyer flasks up to 500 ml.

Details

VX 8, Ident. No. 0000910400

Dimensions (W x D x H)	265 x 136 x 60 mm
Clamping range	25 – 135 mm
Min. height of vessel	80 mm
Weight	760 g

€ 599,00



VX 2 TEST TUBE ATTACHMENT

For up to 36 test tubes or centrifugal tubes with a diameter of 16 mm.

Details

VX 2, Ident. No. 0000568900

Dimensions (W x D x H)	140 x 145 x 115 mm
Material	macrolon
Weight	300 g

€ 359,00



VX 1 ONE-HAND ATTACHMENT

For shaking single, non-fixed vessels of 1 – 250 ml.

Details

VX 1, Ident. No. 0000607200

Dimensions (W x D x H)	130 x 135 x 40 mm
Weight	160 g

€ 85,00



VX 11 BASIC HOLDER

Attachment for test tube inserts.

Ident. No. 0003627700

€ 129,00



VX 8.1 CLAMPING ROLL

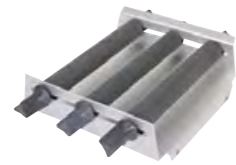
Spare for use with VX 8 universal attachment.

Ident. No. 0003375400

€ 33,00

Accessories

/// KS 130



AS 130.1 UNIVERSAL ATTACHMENT

For use with various types of vessels by means of universal, infinitely variable clamping rolls.

Included with delivery:

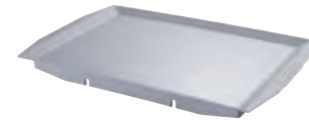
1 x AS 1.30 Basic holder, 3 x AS 1.31 Clamping roll, 6 x AS 1.5 Fastening screw

Details

AS 130.1, Ident. No. 0008017300

Dimensions (W x D x H)	325 x 234 x 88 mm
Set-up plate	220 x 220 mm
Weight	850 g

€ 299,00



AS 130.3 DISH ATTACHMENT

For smooth shaking operations in the low viscosity range, e.g. Petri dishes or culture bottles.

With integrated slip-resistant foil (PP).

Details

AS 130.3, Ident. No. 0003120000

Dimensions (W x D x H)	420 x 270 x 32 mm
Set-up plate	220 x 340 mm
Weight	370 g

€ 85,00



AS 130.2 FIXING CLIP ATTACHMENT

For processing round flasks, measuring flasks and Erlenmeyer flasks. Please order fixing clips separately.

Accessories:

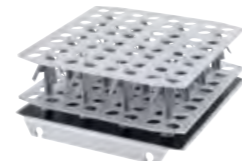
Fixing clips: AS 2.1, AS 2.2, AS 2.3, AS 2.4, AS 2.5

Details

AS 130.2, Ident. No. 0003115000

Dimensions (W x D x H)	230 x 230 x 24 mm
Number of fixing clips (volume)	20 x AS 2.1 (25 ml)
	12 x AS 2.2 (50 ml)
	12 x AS 2.3 (100 ml)
	4 x AS 2.4 (250 ml)
	4 x AS 2.5 (500 ml)
Weight	650 g

€ 90,00



AS 130.4 TEST TUBE ATTACHMENT

For intensive shaking, e.g. small tubes, test tubes, cuvettes, centrifuge tubes.

Details

AS 130.2, Ident. No. 0003120300

Dimensions (W x D x H)	220 x 230 x 95 mm
Capacity	64
Vessel Ø	10 – 16 mm
Min. height of vessel	80 mm
Min. height of vessel	670 g

€ 201,00

Accessories

/// KS/HS 260 basic/control and KS 3000



AS 260.1 UNIVERSAL ATTACHMENT

For various types of vessels. Infinitely variable clamping rolls allow universal adaptation to the vessels.

Included with delivery:

1 x AS 1.60 Basic holder, 4 x AS 1.61 Clamping roll, 8 x AS 1.5 Fastening screw

Details

AS 260.1, Ident. No. 0008017400

Dimensions (W x D x H)	425 x 335 x 135 mm
Set-up plate	320 x 320 mm
Weight	1.600 g

€ 499,00



AS 260.3 DISH ATTACHMENT

For smooth movement for cell cultures, nutrient media in Petri dishes, culture bottles and vessels with a low center of gravity. With integrated slip-resistant foil (PP).

Details

AS 260.3, Ident. No. 0003120600

Dimensions (W x D x H)	410 x 370 x 32 mm
Set-up plate	320 x 320 mm
Weight	460 g

€ 107,00



AS 260.2 FIXING CLIP ATTACHMENT

For shaking flasks, Erlenmeyer flasks and bottles with a round cross-section (without fixing clips).

Accessories:

Fixing clips: AS 2.1, AS 2.2, AS 2.3, AS 2.4, AS 2.5

Details

AS 260.2, Ident. No. 0003115500

Dimensions (W x D x H)	330 x 330 x 24 mm
Number of fixing clips (volume)	56 x AS 2.1 (25 ml)
	23 x AS 2.2 (50 ml)
	23 x AS 2.3 (100 ml)
	11 x AS 2.4 (250 ml)
	9 x AS 2.5 (500 ml)
5 x AS 2.6 (1.000 ml)	
Weight	1.290 g

€ 127,00



AS 260.5 SEPARATING FUNNEL ATTACHMENT

For shaking out, salting out, extracting, eluting and enriching. The 3 clamping rolls (included in delivery) are height-adjustable for adaption to different separating funnel sizes. The separating funnels are secured with O-rings (6 O-rings included).

Details

AS 260.5, Ident. No. 0003120900

Dimensions (W x D x H)	334 x 425 x 145 mm
Capacity: (number of separating funnels per volume, pear-shaped)	6 x 50 ml
	5 x 100 ml
	3 x 250 ml
3 x 500 ml	
Weight	1.550 g

€ 519,00

Accessories

/// HS/KS 501 digital



AS 501.1 UNIVERSAL ATTACHMENT

For various types of vessels with a minimum volume of 50 ml. Ideally more than 250 ml. The clamping rolls may be adjusted to two levels.

Included with delivery:

1 × AS 1.10 Basic holder, 6 × AS 1.11 Clamping roll, 12 × AS 1.6 Fastening screw

Details

AS 501.1, Ident. No. 0008000200

Dimensions (W × D × H)	480 × 500 × 120 mm
Set-up plate	420 × 420 mm
Weight	4.000 g

€ 1.499,00



AS 501.3 SEPARATING FUNNEL ATTACHMENT

Same features as AS 501.2.

Included with delivery:

1 × AS 1.10, 4 × AS 1.11, 4 × AS 1.6, 4 × AS 1.7

Details

AS 501.3, Ident. No. 0008000400

Dimensions (W × D × H)	480 × 505 × 190 mm
Capacity: (number of separating funnels per volume, pear-shaped)	4 × 500 ml 3 × 1.000 ml 2 × 2.000 ml
Weight	3.720 g

€ 1.299,00



AS 501.2 SEPARATING FUNNEL ATTACHMENT

For shaking out, eluting, extracting, gassing out, dissolving, enriching, etc. Adjustment for the clamping rolls is infinitely variable, the set-up height can be changed by means of clamping devices.

Included with delivery:

1 × AS 1.10, 6 × AS 1.11, 6 × AS 1.6, 6 × AS 1.7

Details

AS 501.2, Ident. No. 0008000300

Dimensions (W × D × H)	480 × 505 × 190 mm
Capacity: (number of separating funnels per volume, pear-shaped)	12 × 50 ml 10 × 100 ml 6 × 250 ml
Weight	4.180 g

€ 1.599,00



AS 501.4 FIXING CLIP ATTACHMENT

For shaking flasks, Erlenmeyer flasks and pear-shaped flasks (without fixing clips).

Accessories:

Fixing clips : AS 2.1, AS 2.2, AS 2.3, AS 2.4, AS 2.5

Details

AS 501.4, Ident. No. 0002341100

Dimensions (W × D × H)	475 × 460 × 95 mm
Number of fixing clips (volume)	110 × AS 2.1 (25 ml) 55 × AS 2.2 (50 ml) 35 × AS 2.3 (100 ml) 16 × AS 2.4 (250 ml) 12 × AS 2.5 (500 ml) 8 × AS 2.6 (1.000 ml)
Weight	2.640 g

€ 997,00



AS 501.5 DISH ATTACHMENT

For smoothly shaking dishes, but also for smooth mixing in vessels with a large, flat bottom (wide-necked Erlenmeyer flasks and beakers).

A plastic foil with mild adhesive prevents the vessel from slipping.

Details

AS 501.5, Ident. No. 0002339600

Dimensions (W × D × H)	450 × 450 × 45 mm
Set-up plate	420 × 420 mm
Weight	1.120 g

€ 199,00



AS 501.6 SEPARATING FUNNEL ATTACHMENT

Same features as AS 501.2.

This attachment will hold 4 × 1.000 ml separating funnels.

Included with delivery:

1 × AS 1.10, 4 × AS 1.6, 4 × AS 1.12, 8 × AS 1.13

Details

AS 501.6, Ident. No. 0008000500

Dimensions (W × D × H)	480 × 505 × 225 mm
Capacity: (number of separating funnels per volume, pear-shaped)	4 × 1.000 ml
Weight	5.500 g

€ 2.299,00

Accessories

/// Further accessories HS/KS



AS 1.30 BASIC HOLDER
For use with universal attachment AS 130.1.
Accessories: AS 1.31, AS 1.5

Details	
AS 1.30, Ident. No. 0003148000	
Dimensions (W x D x H)	252 x 234 x 88 mm
€ 253,00	



AS 1.10 BASIC HOLDER
For use with universal attachment AS 501.1 and separating funnel attachments AS 501.2, AS 501.3 and AS 501.6.
Accessories:
AS 1.11, AS 1.6, AS 1.7, AS 1.8, AS 1.12, AS 1.13

Details	
AS 1.10, Ident. No. 0002339700	
Dimensions (W x D x H)	480 x 480 x 120 mm
€ 675,00	



AS 1.60 BASIC HOLDER
For use with universal attachment AS 260.1.
Accessories: AS 1.61, AS 1.5

Details	
AS 1.60, Ident. No. AS 1.60	
Dimensions (W x D x H)	348 x 335 x 135 mm
€ 455,00	



AS 1.31

CLAMPING ROLL
/// Comparison

	AS 1.31 Ident. No. 0003030500	AS 1.61 Ident. No. 0003030501	AS 1.11 Ident. No. 0002339800
for attachment	AS 130.1	AS 260.1	AS 501.1
for basic holder	AS 1.30	AS 1.60	AS 1.10
Length	228 mm	335 mm	410 mm
	€ 27,00	€ 34,00	€ 63,00

STICKMAX

- Universal adhesive mat for KS 130, KS/HS 260, KS/HS 501, KS 3000 and KS 4000 shakers.
- > Ideal for frequently changing vessel types and sizes
 - > Self-adhesive
 - > Devices can be easily removed by side tilting movement
 - > Suitable for disinfection
 - > Peel-away strength required: 5 N/cm²



Details		
STICKMAX, Ident. No. 0003920000		
Dimensions (W x D x H)	200 x 200 mm	
Permissible ambient temperature	5 – 80 °C	
Max. speed	300 rpm	
Number of adhesive mats per shaker	KS 130	1 pcs.
	KS/HS 260	3 pcs.
	KS/HS 501	4 pcs.
	KS 3000 i	2 pcs.
	KS 4000 i	4 pcs.
€ 46,00		



Accessories

/// Incubator shakers

ACCESSORIES
/// Comparison

	Description	Price
Other accessories		
① AS 1.6 Ident. No. 0001268400	Fastening screw Two AS 1.6 clamping devices are required for fastening a clamping roll to the corresponding basic holder (for basic holder AS 1.10 only).	€ 43,00
② AS 1.7 Ident. No. 0001269200	Clamping device Two AS 1.6 and two AS 1.7 clamping devices are required for fastening two clamping rolls one above the other (for clamping separating funnels). For basic holder AS 1.10 only.	€ 61,00
③ AS 1.12 Ident. No. 0002594500	Supporting bar For attaching two AS 1.13 ground section holders for fixing 1.000 ml separating funnels. For basic holder AS 1.10 only. Accessories: AS 1.13	€ 125,00
④ AS 1.13 Ident. No. 0002597000	AS 1.13 Ground section holder For attaching separating funnels with ground opening NS 29 (2 x AS 1.13 necessary per separating funnel). For basic holder AS 1.10 only.	€ 121,00
AS 2.0 Ident. No. 0020016475	Fixing clips, 10 ml	€ 41,00
⑤ AS 2.1 Ident. No. 0001234300	Fixing clips, 25 ml	€ 21,00
⑥ AS 2.2 Ident. No. 0001234400	Fixing clips, 50 ml	€ 21,00
AS 2.3 Ident. No. 0001234500	Fixing clips, 100 ml	€ 21,00
⑦ AS 2.4 Ident. No. 0001234600	Fixing clips, 200/250 ml	€ 41,00
⑧ AS 2.5 Ident. No. 0001234700	Fixing clips, 500 ml	€ 41,00
⑨ AS 2.6 Ident. No. 0003819300	Fixing clips, 1.000 ml	€ 41,00



AS 1.400 BASIC HOLDER
Spare for use with universal attachment AS 4000.1

Details
AS 4000, Ident. No. 0003710200

Dimensions (W x D x H)	446 x 447 x 135 mm
	€ 455,00



AS 4000.1 UNIVERSAL ATTACHMENT
For use with various types of vessels. Infinitely variable clamping rolls allow universal adaptation to the vessels.
Included with delivery:
1 x Basic holder, 6 x Clamping roll, 12 x Fastening screw

Details
AS 4000.1, Ident. No. 0008022200

Dimensions (W x D x H)	470 x 447 x 135 mm
Set-up plate	380 x 410 mm
Weight	3.200 g
	€ 799,00



AS 1.401 CLAMPING ROLL
Spare for use with universal attachment AS 4000.1. Length 417 mm

Ident. No. 0003712000
€ 44,00



AS 1.402 FASTENING SCREW
Spare for use with universal attachment AS 4000.1.
Two AS 1.402 fastening screws are required for fastening a clamping roll onto the corresponding basic holder.

Ident. No. 0003712300
€ 7,00



AS 4000.2 FIXING CLIP ATTACHMENT
For shaking flasks, Erlenmeyer flasks and bottles with a round cross section (without fixing clips).

Details	
AS 4000.2, Ident. No. 0003710100	
Dimensions (W x D x H)	470 x 444 x 25 mm
Number of fixing clips (volume)	50 x AS 2.1 (25 ml)
	48 x AS 2.2 (50 ml)
	25 x AS 2.3 (100 ml)
	16 x AS 2.4 (250 ml)
	12 x AS 2.5 (500 ml)
	7 x AS 2.6 (1.000 ml)
Set-up plate	430 x 430 mm
Weight	2.650 g
€ 665,00	



AS 4000.3 DISH ATTACHMENT
For smooth shaking operations in the low viscosity range, e.g. for cell cultures, nutrient media in Petri dishes, culture bottles and vessels with a low center of gravity. With integrated slip-resistant foil (PP).

Details	
AS 4000.3, Ident. No. 0003710000	
Dimensions (W x D x H)	470 x 444 x 25 mm
Set-up plate	430 x 430 mm
Weight	800 g
€ 174,00	

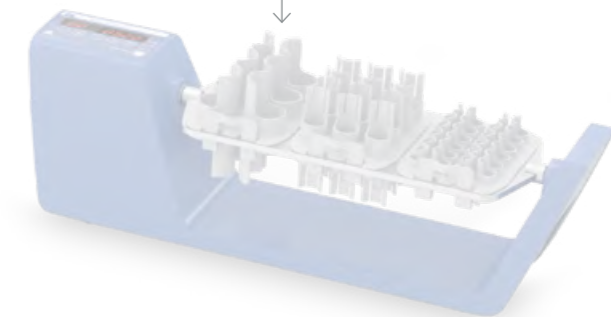
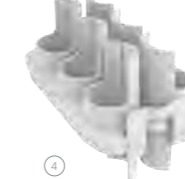
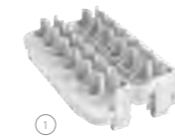


Accessories

/// Trayster basic | digital

ACCESSORIES
/// Comparison

	Description	Price
Trayster accessories		
①	TR 1 Ident. No. 0004525100 Test tube insert, 24 x 1,5 ml microcentrifuge tubes, Ø 10 mm	€ 36,00
②	TR 2 Ident. No. 0004525200 Test tube insert, 24 x 5 ml tubes, Ø 12 mm	€ 36,00
③	TR 3 Ident. No. 0004525300 Test tube insert, 12 x 15 ml centrifuge tubes, Ø 16 mm	€ 36,00
④	TR 4 Ident. No. 0004525400 Test tube insert, 6 x 50 ml centrifuge tubes, Ø 28 mm	€ 36,00

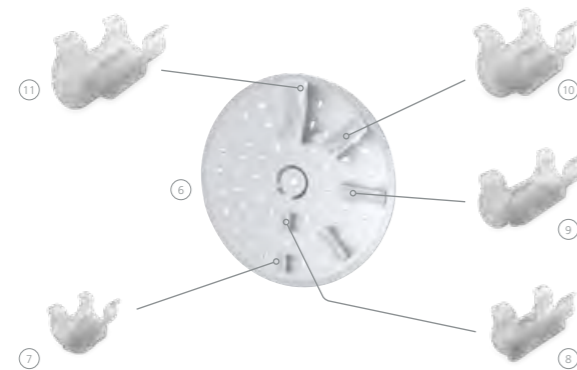


Accessories

/// Loopster basic | digital

ACCESSORIES
/// Comparison

	Description	Price
Tube attachment		
①	DS 1 Ident. No. 0004524000 48 × 1,5 ml microcentrifuge, Ø 10 mm	€ 172,00
②	DS 2 Ident. No. 0004524100 24 × 5 ml tubes, Ø 12 mm	€ 124,00
③	DS 3 Ident. No. 0004524200 20 × 15 ml centrifuge tubes, Ø 16 mm	€ 124,00
④	DS 4 Ident. No. 0004524300 12 × 30 ml, Ø 25 mm	€ 124,00
⑤	DS 5 Ident. No. 0004524400 12 × 50 ml centrifuge tubes, Ø 28 mm	€ 124,00
⑥	DS 6 Universal disc Ident. No. 0004524500 Single tube attachment for holding five different kinds of tubes for greater versatility.	€ 104,00
Spare clips		
⑦	DS 6.1 Ident. No. 0004524600 48 × 1.5 ml, Ø 10 mm, 12 Pcs	€ 32,00
⑧	DS 6.2 Ident. No. 0004524700 24 × 5 ml tubes, Ø 12 mm, 12 Pcs	€ 32,00
⑨	DS 6.3 Ident. No. 0004524800 20 × 15 ml, Ø 16 mm, 12 Pcs	€ 32,00
⑩	DS 6.4 Ident. No. 0004524900 12 × 30 ml, Ø 25 mm, 12 Pcs	€ 32,00
⑪	DS 6.5 Ident. No. 0004525000 12 × 50 ml, Ø 28 mm, 12 Pcs	€ 32,00



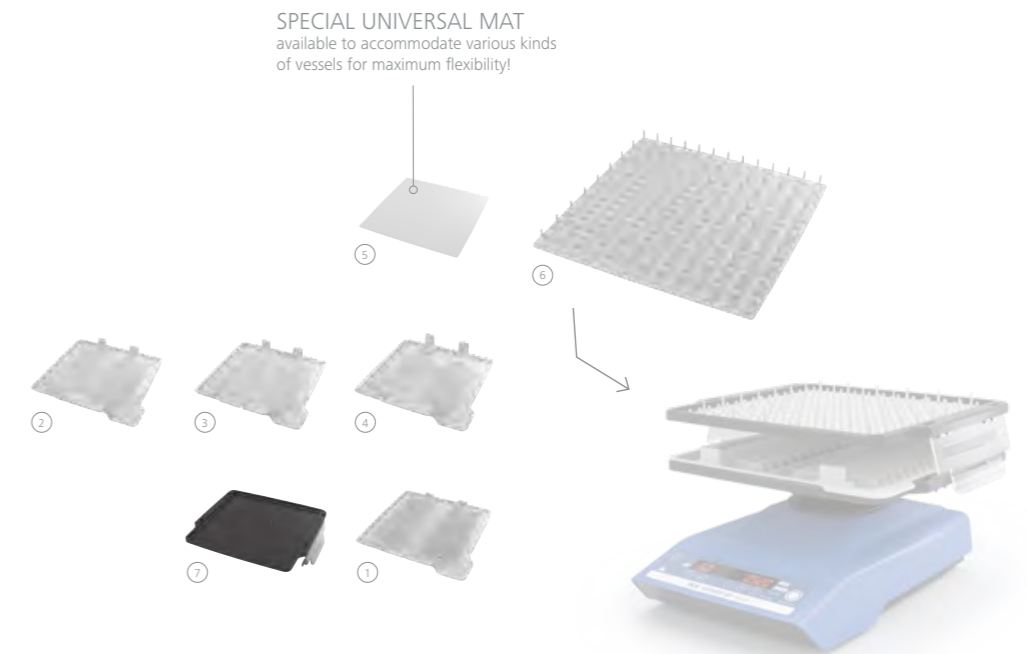
Accessories

/// 2D & 3D Rockers

ACCESSORIES
/// Comparison

	Description	Price
Rocker accessories		
①	TB 1 Ident. No. 0004532200 Tray, 28 × 5 ml, Ø 12 mm	€ 31,00
②	TB 2 Ident. No. 0004532300 Tray, 16 × 15 ml, Ø 16 mm	€ 31,00
③	TB 3 Ident. No. 0004532400 Tray, 14 × 30 ml, Ø 25 mm	€ 31,00
④	TB 4 Ident. No. 0004532500 Tray, 10 × 50 ml, Ø 28 mm	€ 31,00
⑤	RD 1* Ident. No. 0004532000 Universal mat	€ 17,00
⑥	RD 2 Ident. No. 0004532100 Burlled mat	€ 19,00
⑦	A 2 Ident. No. 0004581700 Second level attachment	€ 57,00

* Included in the delivery.



Shakers

/// Recommendation for various flask sizes

ERLENMEYER FLASKS

/// Comparison

IKA Shaker	Attachment Combination	25 ml	50 ml	100 ml	250 ml	500 ml	1.000 ml	2.000 ml	3.000 ml	5.000 ml
Erlenmeyer Flasks										
KS 130	STICKMAX	23	15	6	5	4	1	1**		0
KS 130	AS 130.1	15	12	6	2	2	1	1**		0
KS 130	required clamping rolls	4	4	3	2	2	2	2		0
KS 130	AS 130.2 Fixing clip attachment	12	12	8	4	4	1	0		0
KS 260	STICKMAX	25	16	9	10	9	5	2		1
KS 260	AS 260.1	21	18	15	8	6	3	1		1
KS 260	required clamping rolls	4	4	4	4	4	3	2		2 (4)
KS 260	AS 260.2 Fixing clip attachment	31	28	16	10	8	5	4		0
KS 501	STICKMAX	25	16	9	25	16	9	5	1	1
KS 501	AS 501.1	50	40	30	16	12	9	4	4	1
KS 501	required clamping rolls	6	6	6	5	4	6	3	3	2
KS 501	AS 501.4 Fixing clip attachment	50	35	30	16	12	8	5	0	0
KS 3000 icc	STICKMAX	56	36	25	16	9*	4	0	0	0
KS 3000 icc	AS 3000.1	28	18	15	6	6	2	0	0	0
KS 3000 icc	required clamping rolls	5	4	4 (10)***	4	4	2	0	0	0
KS 3000 icc	AS 3000.2 Fixing clip attachment	29	20	16	9	9	4	0	0	0
KS 3000 icc	AS 3000.3 Dish attachment	49	36	25	9	9	4	0	0	0
KS 4000 i control	STICKMAX	25	16	9	29	16	9	4	1	0
KS 4000 i control	AS 4000.1	45	40	30	16	9	8	4	2	0
KS 4000 i control	required clamping rolls	6	6	6	8	4	4	4	2	0
KS 4000 i control	AS 4000.2 Fixing clip attachment	55	38	25	16	11	7	4	0	0

* Limited recommendation! ** Not recommended! *** 4 = only up; 10 = up + down

VOLUMETRIC FLASKS

/// Comparison

IKA Shaker	Attachment Combination	25 ml	50 ml	100 ml	200 ml	250 ml	500 ml	1.000 ml	2.000 ml
Volumetric Flasks									
KS 130	STICKMAX	25	16	9	5	5	2	1**	**
KS 130	AS 130.1	16	12	6	3	2	2	0	0
KS 130	required clamping rolls for AS 130.1	5	4	3	3	2	2	0	0
KS 130	AS 130.2	15	8	8	4	4	4	1	0
KS 260	STICKMAX	49	36	25	10	10	9	4	**
KS 260	AS 260.1 max. quantity	32	24	20	12	16	6	2	**
KS 260	required clamping rolls for AS 260.1	5	5	7	6	6	4	2	**
KS 260	AS 260.2	30	29	23	9	9	8	4	3
KS 501	STICKMAX	100	64	36	20	16	9	20	**
KS 501	AS 501.1 + 10 AS 1.11 Clamping Roll + 20 AS 1.6 Fastening Screw	70	56	30	25	20	12	6	**
KS 501	required clamping rolls for AS 501.1	8	14	10	6	5	6	4	**
KS 501	AS 501.2	55	50	35	20	20	11	8	5
KS 3000 icc	STICKMAX	64	36	25	16*	12	6	0	0
KS 3000 icc	AS 3000.1	32	18	20	12	8	6	0	0
KS 3000 icc	required clamping rolls for AS 3000.1	5	4	8	6	4	4	0	0
KS 3000 icc	AS 3000.2 Fixing clip attachment	31	31	20	10	10	5	0	0
KS 3000 icc	AS 3000.3 Dish attachment	64	36	25	16	12	6	0	0
KS 4000 i control	STICKMAX	100	64	36	20	20	16	6*	0
KS 4000 i control	AS 4000.1	70	40	24	20	20	12	6	0
KS 4000 i control	required clamping rolls for AS 4000.1	8	6	5	8	8	6	4	0
KS 4000 i control	AS 4000.2	52	49	30	19	19	11	6	0

* Limited recommendation! ** Not recommended!

BEAKERS (TALL)
/// Comparison

IKA Shaker	Attachment Combination	25 ml	50 ml	100 ml	150 ml	250 ml	400 ml	600 ml	800 ml	1.000 ml	2.000 ml	3.000 ml
Beakers (high form)												
KS 130	STICKMAX	25	16	9	9	9	5	4	4	4*	1*	1*
KS 130	AS 130.1 max. quantity	18	15	8	6	6	3	2	2	2	1*	1*
KS 130	required clamping rolls for AS 130.1	4	3	3	3	3	2	2	2	2	2	2
KS 260	STICKMAX	64	36	25	25	16	9	9	9	9	4*	4*
KS 260	AS 260.1 max. quantity	45	28	18	15	15	8	6	6	6	2	2
KS 260	required clamping rolls for AS 260.1	6	5	4	4	4	3	3	3	3	2	2
KS 501	STICKMAX	121	81	49	36	36	25	16	16	9	9	4
KS 501	AS 501.1 max. quantity	96	90	40	35	24	20	12	12	12	12	4
KS 501	required clamping rolls for AS 501.1	9	8	5	5	5	4	4	4	4	3	4
KS 3000 icc	STICKMAX	81	49	36* (25+)	25	25*	16	16	9	9	4	
KS 3000 icc	AS 3000.1 max. quantity	50	28	18	15	10	8	6	6	6	2	
KS 3000 icc	required clamping rolls	6	5	4	4	3	3	3	3	3	2	
KS 3000 icc	AS 3000.3 Dish attachment	100	49	36	25	25	16	16	9	9	4	
KS 4000 i control	STICKMAX	121	81	49	36	36	25	16	16	9	9	4
KS 4000 i control	AS 4000.1 max. quantity	77	48	35	30	24	20	12	12	12	6	4
KS 4000 i control	required clamping rolls for AS 4000.1	8	7	6	5	5	4	4	4	4	3	3

* Limited recommendation! ** Not recommended! + recommended!

BEAKERS (LOW)
/// Comparison

IKA Shaker	Attachment Combination	25 ml	50 ml	100 ml	150 ml	250 ml	400 ml	600 ml	800 ml	1.000 ml	2.000 ml	3.000 ml	5.000 ml	10.000 ml
Beakers (low form)														
KS 130	STICKMAX	25	16	9	9	5	4	4	4	2	1	1*	1*	**
KS 130	AS 130.1 max. quantity	15	8	8	8	4	2	2	2	2	2	1*	0	**
KS 130	required clamping rolls for AS 130.1	4	3	3	3	3	2	2	2	2	2	2		
KS 260	STICKMAX	64	36	25	16	10	9	9	6	6	4	2	1	1*
KS 260	AS 260.1 max. quantity	32	24	15	12	8	6	6	6	2	2	2	1	1*
KS 260	required clamping rolls for AS 260.1	5	5	4	4	3	3	3	3	2	2	2	2	2
KS 501	STICKMAX	100	64	49	36	25	16	16	10	9	9	4	4	1
KS 501	AS 501.1 max. quantity	70	48	42	30	20	16	12	9	9	6	4	1	1
KS 501	required clamping rolls for AS 501.1	8	7	6	5	4	4	3	3	3	3	3	2	2
KS 3000 icc	STICKMAX	64	49* (36+)	25	25*	16	9	9		6	4		0	0
KS 3000 icc	AS 3000.1 max. quantity	32	24	15	12	8	6	6		2	2		0	0
KS 3000 icc	required clamping rolls for AS 3000.1	5	5	4	4	3	3	3		2	2		0	0
KS 3000 icc	AS 3000.3 Dish attachment	64	36	36* (25+)	25	16	9	9		9	4		0	0
KS 4000 i control	STICKMAX	100	64	49	36	25	16	16	10	9	9	4	4	1*
KS 4000 i control	AS 4000.1 max. quantity	70	48	30	20	20	12	12	9	6	4	4	2	1*
KS 4000 i control	required clamping rolls for AS 4000.1	8	7	6	5	5	4	4	4	3	3	3	2	2

* Limited recommendation! ** Not recommended! + recommended!

Overview

/// Select your ideal shaker

SELECT YOUR IDEAL SHAKER
/// Comparison

Shaking diameter	Max. Permissible shaking weight	Speed range	Recommended IKA device	Applications
Vortex The cup generates a 'whirlpool' vortex action				
4,5 mm	0,5 kg	0 – 3.000 rpm	MS 3 basic	Suitable for shaking small vessels and microtiter plates
4,5 mm	0,5 kg	0 – 3.000 rpm	MS 3 digital, Vortex 4 digital	
4,5 mm	max. 50 ml (1 test tube)	2.800 rpm (fixed)	lab dancer	
4,5 mm	0,1 kg	1.000 – 2.800 rpm	Vortex 1	
4 mm	0,4 kg	500 – 2.500 rpm	Vortex 2	
4 mm	0,4 kg	500 – 2.500 rpm	Vortex 3	
4,5 mm	0,5 kg	0 – 3.000 rpm	Vortex 4 basic	
Orbital The platform moves in a circular orbit				
20 mm	20 kg	10 – 500 rpm	KS 4000 i control	Ideal for unattended operation in a temperature-controlled environment
20 mm	20 kg	10 – 500 rpm	KS 4000 ic control	
20 mm	7,5 kg	10 – 500 rpm	KS 3000 i control	
20 mm	7,5 kg	10 – 500 rpm	KS 3000 ic control	
4 mm	2 kg	0 – 2.200 rpm	VXR basic	Ideal for mixing in test tubes, microtiter plates, bottles, flasks and beakers. A wide range of attachment combinations allows for using almost all shapes and sizes of vessels
3 mm	2 or 4 microtiter plates	0 – 1.100 rpm	MTS 2/4 digital microtiter shaker	
4 mm	2 kg	80 – 800 rpm	KS 130 basic	
4 mm	2 kg	80 – 800 rpm	KS 130 control	
10 mm	7,5 kg	20 – 500 rpm	KS 260 basic	
10 mm	7,5 kg	10 – 500 rpm	KS 260 control	
30 mm	15 kg	0 – 300 rpm	KS 501 digital	

SELECT YOUR IDEAL SHAKER
/// Comparison

Shaking diameter	Max. Permissible shaking weight	Speed range	Recommended IKA device	Applications
Reciprocating The platform moves back and forth horizontally				
20 mm	7,5 kg	20 – 300 rpm	HS 260 basic	Ideal for shaking out, eluting, extracting, gassing out, dissolving, enriching, etc.
20 mm	7,5 kg	10 – 300 rpm	HS 260 control	
30 mm	15 kg	0 – 300 rpm	HS 501 digital	
Rocking (See-saw action) The platform rocks on a central pivot				
8° (angle)	2 kg	5 – 80 rpm	Rocker 2D basic	Used for homogenous mixing in flasks, culture flasks, Petri dishes and tubes
0 – 15° (angle)	2 kg	5 – 80 rpm	Rocker 2D digital	
Rocking (3D Tumbling motion) The platform moves in a three-dimensional motion				
8° (angle)	2 kg	30 rpm (fixed)	Rocker 3D basic	Ideal for low foaming agitation, DNA extractions, staining and de-staining procedures, etc.
0 – 15° (angle)	2 kg	5 – 80 rpm	Rocker 3D digital	
Rocking and Rolling The platform rocks on a central pivot as well as revolves around a fixed point				
24,5 mm (high)	2 kg	30 rpm (fixed)	Roller 6 basic	Recommended for mixing blood samples, viscous substances and liquid-solid suspensions where minimum aeration is required
24,5 mm (high)	2 kg	5 – 80 rpm	Roller 6 digital	
24,5 mm (high)	2 kg	30 rpm (fixed)	Roller 10 basic	
24,5 mm (high)	2 kg	5 – 80 rpm	Roller 10 digital	
Rotating Platform revolves at a tilted angle				
adjustable from horizontal to vertical	2 kg	20 rpm (fixed)	Loopster basic	Ideal for keeping biological samples in suspension and for general mixing applications
adjustable from horizontal to vertical	2 kg	5 – 80 rpm	Loopster digital	
vertical or horizontal	2 kg	20 rpm (fixed)	Trayster basic	
vertical or horizontal	2 kg	5 – 80 rpm	Trayster digital	

labworldsoft® software

/// Advanced software used for lab automation

IKA's software labworldsoft® has an innovative approach to lab automation. It enables the networking of up to 64 laboratory devices which can be controlled simultaneously via one PC. Not only IKA products, but also other manufacturers laboratory devices can be integrated using labworldsoft®.

This makes the automation of your laboratory experiments and processes much more easy and efficient.



labworldsoft® software

Ident. No. 0004720000

€ 1.285,00

HARDWARE AND SOFTWARE REQUIREMENTS

/// labworldsoft® software, Ident. No. 0004720000

Pentium processor with at least 16 MB RAM, 8 MB free hard disc memory, VGA-Display: monochrome with at least 16 levels of gray or color, Windows 95/98/2000/NT/ME/XP/7 and com ports can be upgraded for certain requirements.

TRY IT FOR YOURSELF

Get your free, fully functional 30 day trial version download at: www.ika.com/en

Worldwide service network

/// Direct contacts in your region

Our dedicated team of engineers provides comprehensive technical services worldwide. If you have any service questions, please do not hesitate to contact IKA directly.

Alternatively, you can get in touch with your dealer. IKA guarantees that spare parts will be available for 10 years. In the event of any faults with a device, or if you have any technical questions regarding the devices, maintenance or replacement parts, please call us on **00 8000 4524357** (00 8000 IKAHELP) or send us an eMail at service@ika.de



Customizing Center

It is important that IKA products work for your application. We have a special program: product solutions tailored to your needs.

Should you not find the appropriate device in our standard product range, please send us your requested specifications through the online form. Our team will determine its feasibility and offer a solution to you.

Please visit www.ika.com to review already implemented product modifications.

IKA

customized



IKA Application Support

Our Application Center spans 400 m² and is equipped with the most modern facilities for presenting and testing laboratory equipment and processes. The Center brings us even closer to our customers and improves our service. If you are interested, you can use our facilities to test processes that include stirring, shaking, dispersing, grinding, heating, analysis and distillation.

Call us on **00 8000 4522777** (00 8000 IKAAPPS) or send an eMail to applicationsupport@ika.de.



Our Application Center covers **400 m²** and offers modern equipment for demonstrating and testing laboratory devices and processes.



Send us your sample. We will run a test with the suitable device – within 2 working days.



We would be happy to help you find the **perfect device** for your application.



Interested individuals and customers can **test processes** including stirring, shaking, dispersing, milling, heating, analyzing and distilling.



designed for scientists

EN

IKA-Werke GmbH & Co. KG

Janke & Kunkel-Straße 10, 79219 Staufen, Germany
Phone: +49 7633 831-0, Fax: +49 7633 831-98
eMail: sales@ika.de

/// WORLDWIDE

USA

IKA Works, Inc.
Phone: +1 910 452-7059
eMail: sales@ika.net

MALAYSIA

IKA Works (Asia) Sdn Bhd
Phone: +60 3 6099-5666
eMail: sales.lab@ika.my

JAPAN

IKA Japan K.K.
Phone: +81 6 6730 6781
eMail: info_japan@ika.ne.jp

VIETNAM

IKA Vietnam Company Limited
Phone: +84 28 38202142
eMail: sales.lab-vietnam@ika.com

KOREA

IKA Korea Ltd.
Phone: +82 2 2136 6800
eMail: info@ika.kr

CHINA

IKA Works Guangzhou
Phone: +86 20 8222 6771
eMail: info@ika.cn

INDIA

IKA India Private Limited
Phone: +91 80 26253 900
eMail: info@ika.in

BRAZIL

IKA Brasil
Phone: +55 19 3772-9600
eMail: sales@ika.net.br

POLAND

IKA Poland Sp. z o.o.
Phone: +48 22 201 99 79
eMail: sales.poland@ika.com

ENGLAND

IKA England LTD.
Phone: +44 1865 986 162
eMail: sales.England@ika.com

/// ONLINESHOP

Discover and order the fascinating products of IKA online:
www.ika.com

/// SOCIAL MEDIA



IKAworldwide



IKAworldwide /// #lookattheblue



@IKAworldwide

Prices and technical specifications may be changed without prior notice. Prices are valid until October 31st, 2018. All prices are subject to VAT.