



Q-LED VOLVO XC90 15-

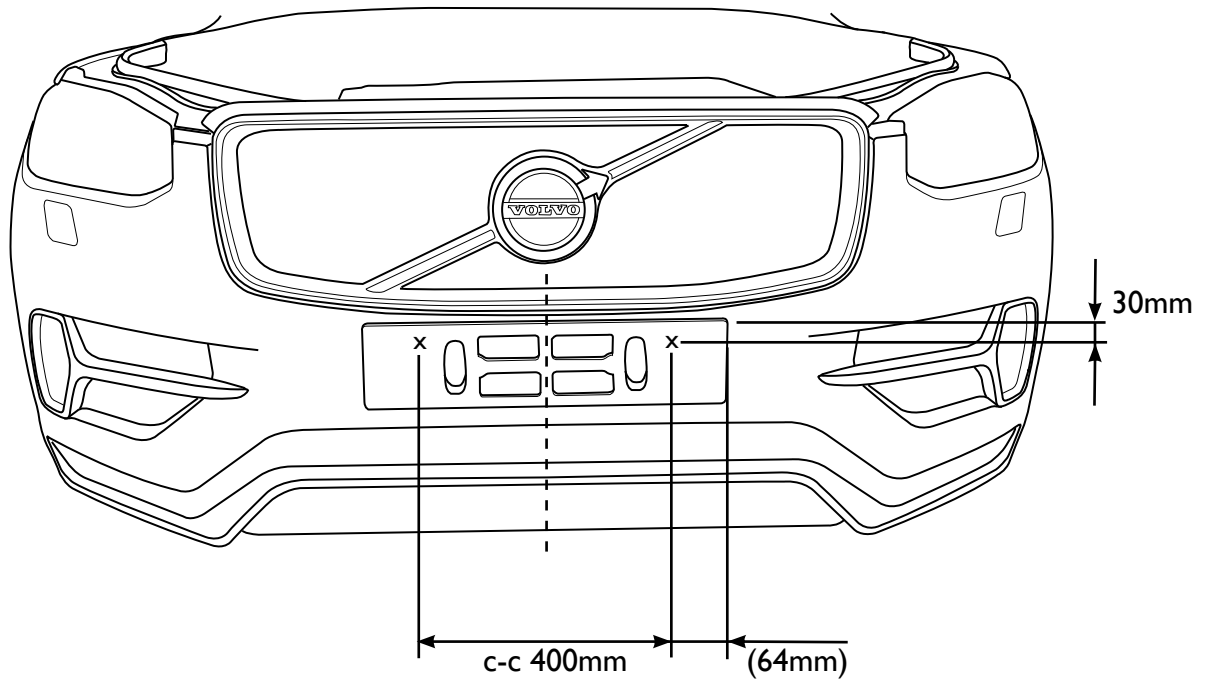
Art nr: QL90027
Mounting kit: 93245



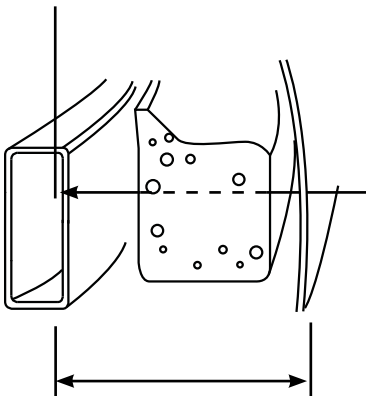
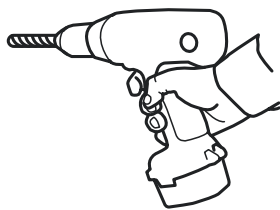
Installation

The product is mounted to
the front beam.



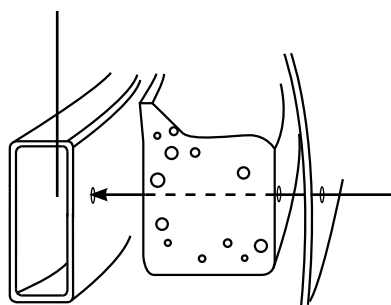
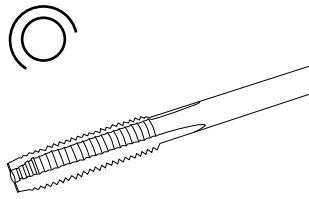


1. $\varnothing 6.8\text{mm}$ (2x)

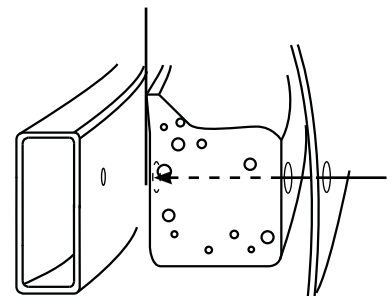


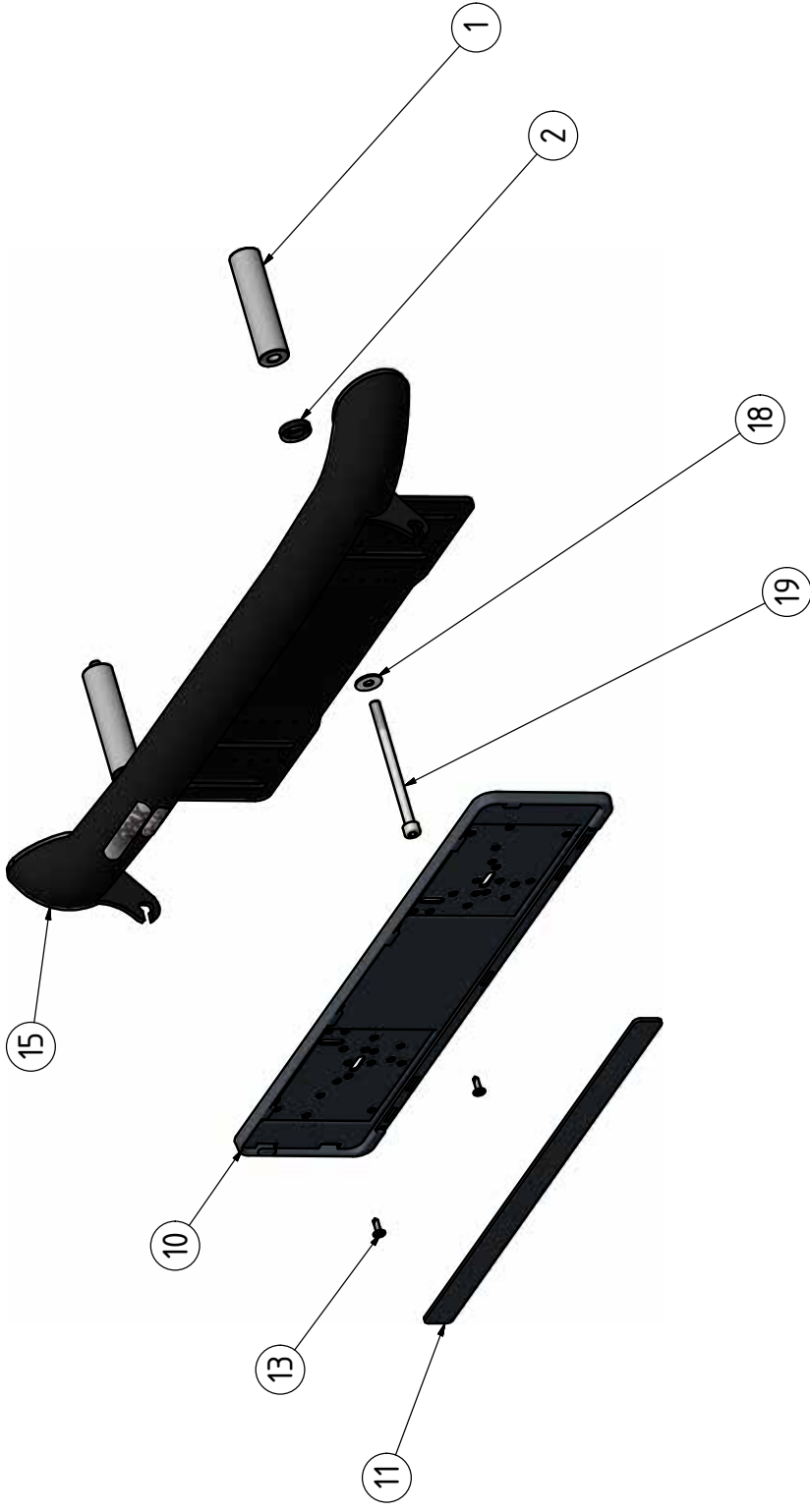
L = ~120mm

2. M8 (2x)



3. $\varnothing 25\text{mm}$ (2x)





Pos	Ant	SMST Titel	MATERIAL	Dimension	Artikel nr/Referens
22	2	Sexkanthålskruv med sänkhuvud	Steel		34171
21	1	Fäste LED 75-85mm cc560mm vä	ENAW 5754	T=5	100605
20	1	Fäste LED 75-85mm cc560mm hö	ENAW 5754	T=5	100604
19	2	Sexkanthålskruv	Stainless Steel, 440C		34200
18	2		Steel	22x8x1,5	34314
17	1	Dekal Q-LED	Domes		60320
16	2	Täcklock	Rubber	T=5	100624
15	1	LED Fäste			L10-152
13	2	Montage skruv PK typ M-II	Stainless Steel, 440C	4,2x14	34096
11	1	Reklamlist Qpax	Polycarbonate		98021
10	1	Skythållare	Polycarbonate		98020
6	1	Dekal QPAX	Silicone	80x15	60305
2	2	Distansbricka	Nylon-6/6	Ø25x5	50958
1	2	Aludistans	ENAW 6082	Ø25x100	10899

Konstr. JNO Riktad JNO Kop. Kontr. Stand. Godk. Skala 1 : 4 Ersätter Ersatt av

Dar ej annat anges, gäller SS-ISO 2768 - C och SMS 723 - B. Sveriskvalite för sveitar enligt SS-ISO 5817 n/w4.C.

QPAX Q-LED ledrampsfäste
Voivo XC90 15-

93245

2016-01-26
 93245.idw
 93245

emil.mf@qpax.se
 Tel +46 (0)81-760-460