



MAGNIFICATION



ILLUMINATION



Add: No. 159, Xingguo Road, Longwan district, Wenzhou, China
Postcode: 325011
Tel: +86-577-89615565
E-mail: info@chinaamtech.com

www.amtechoptic.com

COMPANY PROFILE



温州昂泰医疗科技有限公司是国内手术放大镜、LED头灯以及显微镜配件领域的领先制造商。我们拥有十余年的经验，并有着一批优秀的技术人员，专注于新产品的研发。产品远销北美、美国、日本、欧洲及东南亚、中东等国家和地区。

目前手术放大镜、LED头灯及显微镜系统已广泛地应用于神经外科、骨科、眼科、心血管、口腔医学、大学和高中实验室等领域。我们真诚希望为客户提供高质量的产品、最满意的服务和最具竞争力的价格。

热忱欢迎与昂泰开展合作，祝愿拥有丰硕的业务以及广阔的合作前景！

China Wenzhou Amtech Medical Technology Co., Ltd, is a leading manufacturer of loupes, LED headlamps and microscopes accessories. We have more than 10 years experiences, having a group of excellent technician who take on strong sense of responsibility of researching & developing new products, Products are exported to North America, Japan, Europe, Southeast Asia, the Middle East and other countries or regions in the world.

The loupes, LED headlamp and microscopes system now are widely used in neurosurgery, orthopedic, ophthalmic, cardiovascular, stomatology, laboratories in universities and high school etc. We sincerely hope to offer high quality products, most satisfactory service and competitive price to cooperate with customers.

Warmly welcome to Amtech for fruitful business and bright prospects of cooperation!

www.amtechoptic.com

Through Of The Lens
TTL 定制款

01

page

01-09

page
10-13

02

Flip Up Loupes
可调式放大镜

Keplerian Prismatic
Loupes
开普勒式棱镜放大镜

03

page

14

page
15-20

04

Headlights
头灯

Microscope
Accessories
显微镜配件

05

page

21-22

page
23-28

06

Accessories
配件

PRODUCTS

CONTENT



New

ErgoZM



全新Amtech ErgoZM放大镜在保留ErgoAm设计的基础上，融合先进技术，带来全新工作体验！它具备400~600mm范围内自由调节工作距离的功能，满足不同需求，提升工作灵活性。更宽广的视野，确保您在工作中始终保持舒适与清晰。ErgoZM提供3种放大倍率选择——3.5x、5.0x和6.0x，完美适配各种精密操作，让每个细节都尽收眼底。

The all-new Amtech ErgoZM Magnifier has the maintained ErgoAm design with advanced feature: to realize free adjustments of working distances on each side within a range of 400 to 600mm. Besides, it obtains an exceptionally wider field of view, which guarantees comfort while working. New ErgoZM provides three magnification options-3.5X, 5.0X, and 6.0X.

Specification of ErgoZM

Magnification	Working Distance	Depth of Focus	Field of View	Weight (with AM260 Ti)
3.5x	400-600mm	90-140mm	80-130mm	59.0g
5.0x	400-600mm	60-90mm	60-160mm	61.0g
6.0x	400-600mm	50-70mm	100-135mm	63.0g

*建议使用镜架：Am100Ti、Am260T、Am280Ti、Am310、Am320、Am559
*Recommend frame: Am100Ti、Am260Ti、Am280Ti、Am310、Am320、Am559



ErgoAM

昂泰ErgoAm转角系列放大镜，提供了3.5至8倍的高放大倍率，满足不同的工作需求，让您在高清宽阔的视野中自由操作，符合人体工程学设计的转角镜筒，同时您的颈椎和脊椎健康。

The ErgoAm loupes is new series of Amtech with clarity comfort magnification and will preserve the health of your neck and your musculoskeletal health. Precision mechanical element to the whole design with unique ergonomic structure brings you maximum comfort and concentration.

Specification of ErgoAM

Magnification	Working Distance	Depth of Focus	Field of View	Weight (with AM280 Ti)
3.5x	Customized	100-140mm	90-110mm	54.50g
4.0x	Customized	90-120mm	85-110mm	54.50g
5.0x	Customized	75-120mm	75-90mm	55.50g
6.0x	Customized	60-80mm	55-75mm	59.50g
8.0x				

*建议使用镜架：Am100Ti、Am260T、Am280Ti、Am310、Am320、Am559
*Recommend frame: Am100Ti、Am260Ti、Am280Ti、Am310、Am320、Am559



TTL-A1

TTL A1定制放大镜采用新型的金属镜筒设计,不仅提高了视觉清晰度,确保了广阔的视野和卓越的景深,还满足了您对时尚的追求。

New mental barrels design,TTL A1 custom-craft loupes not only offers the enhanced visual clarity, ensuring a wide field of view and superior depth of field,but satisfying your pursuit of fashion.



Specification of TTL-A1

Magnification	Working Distance	Depth of Focus	Field of View	Weight
2.5x	Customized	100-150mm	110-190mm	46.0g
3.0x	Customized	90-130mm	75-170mm	46.0g
3.5x	Customized	70-120mm	65-160mm	46.0g

*标配镜架: 运动E架
*标配包装盒: 金属盒或TTL织布盒

*Standard frame: E sport frame
*Standard case: Metal case or Fabric case C

TTL-A3

TTL A3放大镜和超轻铝制镜筒确保您佩戴整日的舒适度和视物精准度。超大视野,最大清晰度和无与伦比的移动自由度,让您可以自由地专注于工作。

TTL A3 loupes with the ultralight aluminum barrels brings all day comfort and precision. Super field of view, maximum sharpness and unsurpassed freedom of movement, leaving you free to concentrate on your work.



Specification of TTL-A3 (Mini)

Magnification	Working Distance	Depth of Focus	Field of View	Weight
2.5x	Customized	90-120mm	130-200mm	40.0g
3.0x	Customized	80-110mm	110-150mm	42.0g

*标配镜架: TR90或铝美镜架
*标配包装盒: 金属盒或TTL织布盒

*Standard frame: TR90 or Alu-mag frame
*Standard case: Metal case or Fabric case C



● TTL-A2 4.0x



● TTL-A2 5.0x

TTL-A2

TTL A2的放大倍率范围从4.0倍到5.0倍不等，特别适用于执行精确操作的医疗保健专业人员。全新的紧凑型金属超轻设计带来全天舒适体验。

宽广的视野，清晰的边缘，自定义的镜筒倾斜角度可以满足您的独特需求。新型工具助力您精细的操作，值得拥有！

Ranged from 4.0x to 5.0x, TTL A2 are specially for healthcare professionals who perform exacting procedures. New compact metallic ultralight design brings comfortable even all-day wear.

Wide field of view, edge clear, customized declination angle can accommodate your unique needs. It is a new precision tool you worth having!

Specification of TTL-A2 (Prism)

Magnification	Working Distance	Depth of Focus	Field of View	Weight
4.0x	Customized	65-85mm	100-150mm	51.0g
5.0x	Customized	60-75mm	80-120mm	52.0g

*标配镜架：TR90或铝美镜架
*标配包装盒：金属盒或TTL织布盒

*Standard frame: TR90 or Alu-mag frame
*Standard case: Metal case or Fabric case C

TTL 3

方形外观设计，时尚舒适，带来不一样的感受！

Amtech TTL3的微型尺寸和轻巧的重量，可确保您获得更大的舒适度和最佳性能。

Most comfortable experience and lightest weight.

The distinction of Amtech TTL3 is micro-size and light weight that ensure you more comfort and optimum performance.



Specification of TTL3 (Mini Square)

Magnification	Working Distance	Depth of Focus	Field of View	Weight
2.5x	Customized	110-150mm	115-180mm	42.0g
3.0x	Customized	90-130mm	70-165mm	42.0g
3.5x	Customized	70-120mm	65-175mm	42.0g

*标配镜架：运动E架
*标配包装盒：金属盒或TTL织布盒

*Standard frame: E sport frame
*Standard case: Metal case or Fabric case C



TTL 5

圆形轻便TTL5系列，采用经典圆形设计使得重量最轻，光学效果依然卓著，提供全天舒适佩戴体验。

此外，您还可以获得预期所需的视觉清晰度和大视场。

The TTL5 Series, round ancient design with most light weight which offers comfortable experience all day. Furthermore you can find visual clarity you would expected.

Specification of TTL5 (Mini Round)

Magnification	Working Distance	Depth of Focus	Field of View	Weight
2.5x	Customized	90-110mm	120-160mm	38.0g
3.0x	Customized	80-100mm	110-150mm	41.0g

*标配镜架：TR90或铝美镜架
*标配包装盒：金属盒或TTL织布盒

*Standard frame: TR90 or Alu-mag frame
*Standard case: Metal case or Fabric case C

TTL 1

TTL1为舒适性和性能设定了行业标准。这款放大镜在经济的价格基础上提供了广阔的视野和景深。

TTL1 set the industry standard for comfort and performance. This loupe delivers great field of view and depth of field at an economical price.



Specification of TTL1 (Classic)

Magnification	Working Distance	Depth of Focus	Field of View	Weight
2.5x	Customized	110-150mm	115-180mm	51.0g
3.0x	Customized	90-130mm	70-165mm	51.0g
3.5x	Customized	70-120mm	65-175mm	51.0g

*标配镜架：运动E架
*标配包装盒：织布小盒TTL织布盒

*Standard frame: Ni-alloy frame or E sport frame
*Standard case: Fabric case B or Fabric case C

具有更高的放大倍率，更精细的成像。

获得手术过程的最高倍以及最清晰精细的图像。

Achieved higher power, higher definition than any other expanded field loupe available.

Obtain the highest resolution and clarity for surgical procedure.

TTL 2

ErgoFL

New



全新推出的Amtech Flip-Up ErgoFL是一款专为外科医生和牙科医生设计的创新工具。其独特的“3D调节设计”使得瞳距、高度和工作距离可以根据个人需求灵活调节。轻质材料与符合人体工程学的设计相结合，确保全天佩戴的舒适性。即使在高倍率下，也能获得宽广的视野，创造无压力的工作体验。

The newly launched Amtech Flip-Up ErgoFL is an innovative tool designed specifically for surgeons and dentists. Its unique "3D adjustment design" allows flexible adjustment of pupillary height, interpupillary distance, and working distance, according to individual needs. Lightweight materials and ergonomic design together ensure all-day wearing comfort. A spectacular field of view is gained even under high magnification that creates a stress-free working experience.

Specification of TTL2 (Prism)

Magnification	Working Distance	Depth of Focus	Field of View	Weight
4.0x	Customized	65-80mm	80-130mm	54.0g
5.0x	Customized	55-70mm	70-120mm	54.0g

*标配镜架：运动E架
*标配包装盒：织布大盒或大皮盒

*Standard frame: E sport frame
*Standard case: Fabric case A or Fabric case C

Specification of ErgoFL

Magnification	Working Distance	Depth of Focus	Field of View	Weight
3.5x	400-600mm	/	60-100mm	70.0g
5.0x	400-600mm	/	45-65mm	72.0g
6.0x	400-600mm	/	35-50mm	74.0g

*建议使用镜架：Am260Ti、Am280Ti、Am310、Am320、E Sport
*Recommend frame: m260Ti、Am280Ti、Am310、Am320、E Sport



螺旋异步可调式设计，便捷，精确，贴合初阶放大镜选购佩戴需求，升级光学系统，带来更加清晰的视觉体验。现代工艺打造的金属外观，兼具时尚与实用，彰显专业品味。

Spiral Asynchronous adjustable design is convenient, precise, meet the needs of beginner loupes users. Upgraded optical system delivers a clearer visual experience. Metal exterior crafted with modern techniques, combining style and practicality, showcasing a professional taste.

GL-M1



New

Specification of GL-M1

Magnification	Working Distance	Depth of Focus	Field of View	Weight
2.5x	360-500mm	100-140mm	115-180mm	63.0g
3.0x	360-500mm	70-125mm	70-165mm	63.0g
3.5x	360-500mm	60-115mm	65-175mm	63.0g

*标配镜架：运动E架
*标配包装盒：织布盒

*Standard frame: E sport frame
*Standard case: Fabric case

GL8

最小的镜筒和最轻的重量，视野更广，景深更深。

The smallest barrel and lightest weight wider field of view and deep depth of field.



Specification of GL8 (Mini Flip-up)

Magnification	Working Distance	Depth of Focus	Field of View	Weight
2.5x	340-500mm	95-130mm	150-260mm	59.0g
3.0x	340-500mm	70-110mm	100-160mm	60.0g

*标配镜架：运动E架
*标配包装盒：织布小盒

*Standard frame: E sport frame
*Standard case: Fabric case B



GL3 异步调节
Asynchronous Style

GL3/GL4

Amtech的伽利略上翻式放大镜具有2.5倍、3.0倍和3.5倍的放大倍率，不同的工作距离和LED照明系统以供选择。多层防反射涂层提供极高的分辨率。防眩光，防雾和耐刮擦光学镜片可确保长时间无故障使用。

Amtech galilean Flip-up loupes delivering 2.5x, 3.0x and 3.5x magnification, different working distance and LED illumination system are available.

Multi-layer anti-reflection coating provides extremely high resolution.

Anti-glare, anti-fog and scratch-resistance optic lens ensure long time no-trouble use.



GL4 同步调节
Synchronous Style

Specification of GL3/GL4

Magnification	Working Distance	Depth of Focus	Field of View	Weight
2.5x	360-500mm	100-140mm	115-180mm	65.0g
3.0x	340-500mm	70-125mm	70-165mm	65.0g
3.5x	340-500mm	60-115mm	65-175mm	65.0g

*标配镜架：运动E架
*标配包装盒：织布小盒

*Standard frame: E sport frame
*Standard case: Fabric case B

更高的放大倍率非常适合精细的外科手术。高质量的棱镜光学镜片可提供边缘清晰的明亮图像。

Higher magnification perfect for precise surgical operation. Quality prismatic optics provides a true edge to edge bright image.

KL3/KL4



KL3 异步调节
Asynchronous Style



KL4 同步调节
Synchronous Style

Specification of KL3/KL4

Magnification	Working Distance	Depth of Focus	Field of View	Weight
4.0x	340-500mm	60-75mm	80-130mm	67.0g
5.0x	340-500mm	55-65mm	70-120mm	67.0g

*标配镜架：运动E架
*标配包装盒：织布大盒

*Standard frame: E sport frame
*Standard case: Fabric case A



Energy I

SEMI-WIRED LED HEADLIGHT



New



Energy I

“能量环”颈挂式头灯将电池融入可穿戴的设计中，减轻头部重量和压力，佩戴无感。3级亮度调节，手势感应技术，无需接触，即可完成亮度调节。磁性头灯接口，佩戴便捷，摆脱长而缠绕的电线，提供最舒适的用户体验。电池容量可支持8小时，连续工作不间断，无忧续航。

“Energy I” neck-hanging headlight integrates the battery into the wearable design, reducing the weight and pressure on the head, no fatigue while work. Provide 3 levels of brightness selection with gesture sensor. Brightness can be controlled without touching. Magnetic headlight is easy to connect. Freedom from long tangled cord and provide the most comfortable user experience. The battery capacity can support up to 8 hours of continuous work without worrying

Specification of Energy I

Specification	Weight	Brightness	Light Color Temp	LED using life
Headlight	10 gram	≥55,000lux	5500k or 6000k	≥50,000 hour

Specification	Weight	Battery life	Run Time	Charging time
Battery	88.5 gram	≥500 recharge cycles	up to 10 hours	2 hours



WHL P01

Wireless Headlight

新款无线头灯带来卓绝无暗影的圆形白色光斑,触摸式电源开关和亮度易调节,易于单手操作,头灯和电池总重仅为29.8克,提供最舒适的用户体验,三块电池续航能力可满足一天的工作所需。

New Wireless LED light provides powerful and round focus white light.Touchable power switch and brightness adjustment, easy one-handed operating.Total only 29.8 gram (light and battery), most comfortable user experience.Three batteries provides energy for a day's work.



Specification of WHLP01

Specification	Weight	Brightness	Light Color Temp	LED using life
Headlight	10 gram	≥35,000lux	Its available in 5500k or 6100k	50,000 hour

Specification	Weight	Battery life	Run Time	Charging time
Battery	20 gram	> 500 recharge cycles	up to 3.5 hours	1.5 hours



HLP05

迷你USB电线连接带来更便捷的体验,新型轻质电缆,可提供电磁电流保护,新型电池组,体积更小,设计更简洁;但功能强大,工作时间长,6格电量指示,避免了遗忘充电的麻烦。

Mini USB cable connection bring more comfortable and convenient experience.New thin soft cable with lightweight providing electromagnetic current protection.New Battery pack, smaller and brief design; but powerful featuring with long work timeLow battery indicator with 6 steps avoiding mis-recharge trouble.

Specification of HLP05

Specification	Weight	Brightness	Light ColorTemp	Power	Illumination Source	Composite Beam Filter
Headlight	8 gram	≥35,000lux	6000k	1W	Bright light LED	Curing filter included

Specification	Type	Weight	Input Voltage	Run Time	Recharge Time
Battery	3350mAh Lithium ion battery	88.35 gram	110V-220V	1.5 hours	3-4 hours



HLP03

真正的白光可提高亮度和清晰度，使得手术范围内无阴影。高效供电满足一整天手术操作需求。

True white light provides brightness sharpness,- shadow free on operation field.

The reliable power supply keeps surgeries running smoothly all day long.



Specification of HLP03

Specification	Weight	Brightness	Light ColorTemp	Power	Illumination Source	Composite Beam Filter
Headlight	22.35 gram	≥35,000lux	6000k	3W	Bright light LED	Curing filter included

Specification	Type	Weight	Input Voltage	Run Time	Recharge Time
Battery	3750mAh Lithium ion battery	135 gram	110V-220V	6-9 hours	Up to 3 hours



HLP02

该款头灯是市场上最小也是最轻便的产品，仅7.55克的重量可让您全天舒适地进行操作，优质的白色光束可提供清晰的视野，改善景深并减缓眼睛疲劳，高效的锂电池在最大电量下可运行11个小时，仅3个小时即可充满电。

The headlights are among the smallest and most lightweight on the market, only 7.55 gram,allows you to practice all day in total comtort.Featured with high quality white beam color provides clear vison,improves depth of field and reduce eye fatigue.Efficient lithium-polymer battery runs for 11 hours on the maximum level and fully recharged in only 3hours.



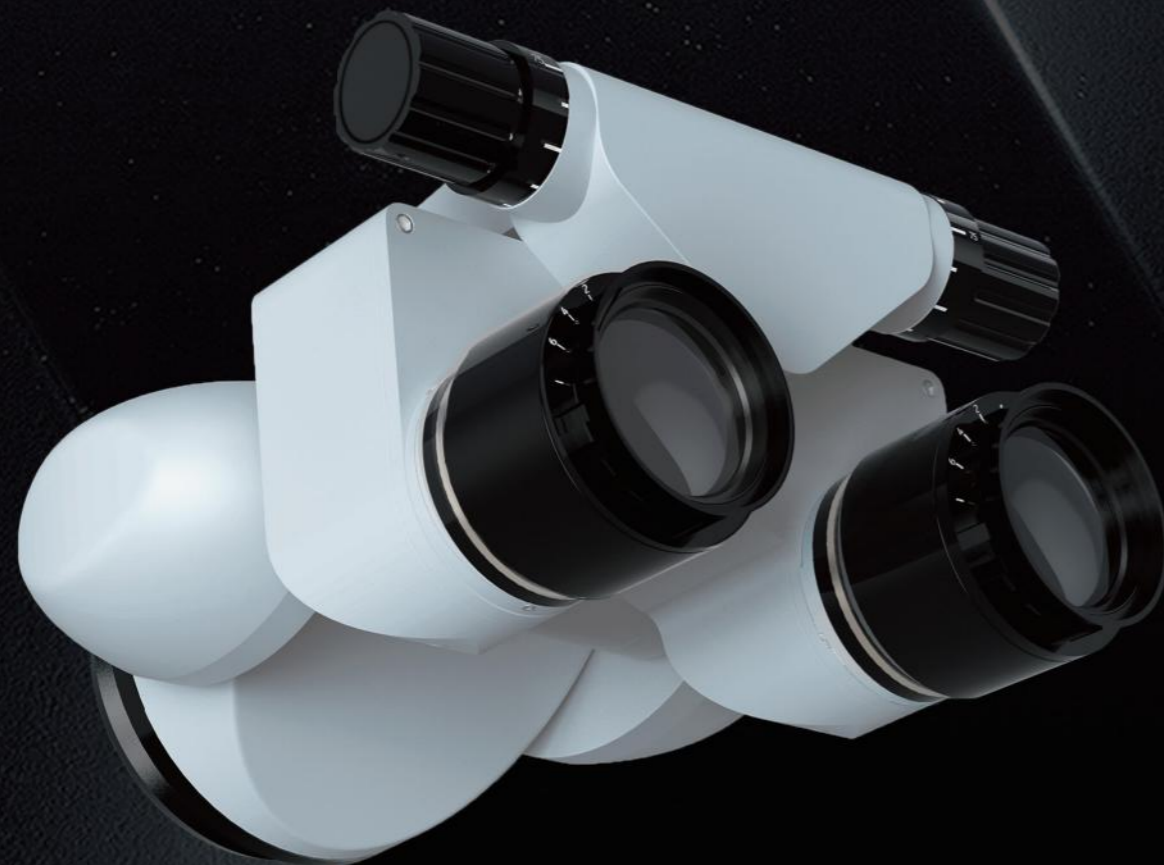
Specification of HLP02

Specification	Weight	Brightness	Light ColorTemp	Power	Illumination Source	Composite Beam Filter
Headlight	7.55 gram	≥35,000lux	6000k	1W	Bright light LED	Curing filter included

Specification	Type	Weight	Input Voltage	Run Time	Recharge Time
Battery	3750mAh Lithium ion battery	135 gram	110V-220V	9-11 hours	Less than 3 hours

MICROSCOPE

Binocular f160 with IPD



Adjustable
pupillary distance

220-degree
rotatable

Extended
binocular tubes



Binocular f160 with IPD

IPD: For a convenient adjustment of inter-pupillary distance. 220-degree rotatable. Extended binocular tubes can be customized.



VarioFocus (200—400mm working distance) with protection glass

VarioFocus objective lenses are compatible with all major microscopes. They replace your current objective lens and provide improved ergonomics during the treatment.

- Continuously adjustable objective lens
 - Replaces current objective. For Zeiss, Leica, Zemax, Global, Kaps, Lab med, etc.
- For highest demands the protection glass with hydrophobic coating (HPC) is available.

Beam Splitter

Beam Splitter allows more light to be diverted to the eyepiece, which retains a bright field for the observer.

Beam splitter: 50:50, double-sided
20:80 Beam Splitter

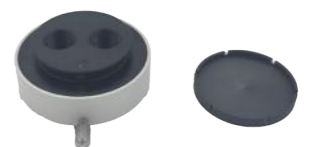


Phone-Imaging-Port

The phone imaging port allows the use of a smartphone for viewing and documentation purposes. The adapter is compatible with all smartphones (up to 6,5").

Turnment Plates

Turnment plates are the interface between binocular and microscope. It allows the microscope head to be moved into any position without the user having to change his ergonomic working position.



Depth of field enhancer

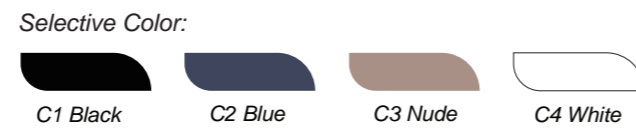


FRAME

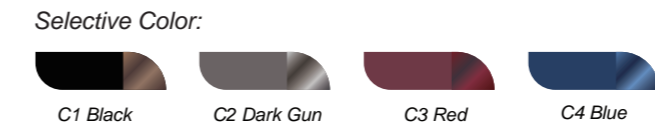
There are many styles of frames, with different colors and materials. You can choose according to your own preferences.



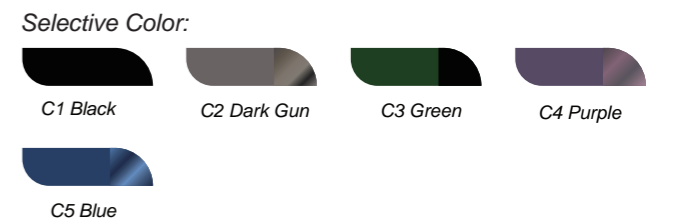
AM100 Ti
Material: **Titanium**
Mount options: **TTL / Ergo Loupes**



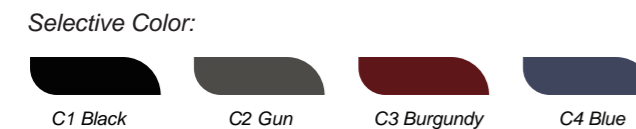
AM310
Material: **Alu-mag**
Mount options: **TTL / Ergo / Flip-up Loupes**



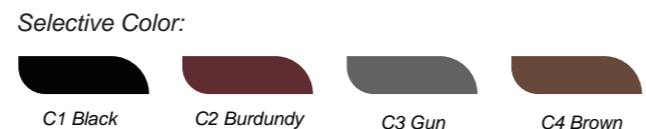
AM320
Material: **Alu-mag**
Mount options: **TTL / Ergo / Flip-up Loupes**



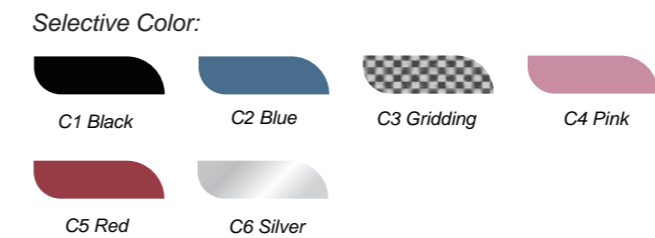
AM260 Ti
Material: **Titanium**
Mount options: **TTL / Ergo / Flip-up Loupes**



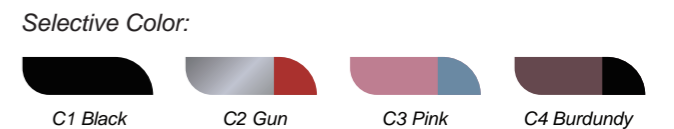
AM280 Ti
Material: **Titanium**
Mount options: **TTL / Ergo / Flip-up Loupes**



E Sport
Material: **Aluminum /plastic**
Mount options: **TTL / Flip-up Loupes**



AM559
Material: **Alu-mag**
Mount options: **TTL / Ergo Loupes**





AM56276

Material: **Alu-mag**
Mount options: **TTL / Ergo Loupes**

Selective Color:



AM640

Material: **Alu-mag**
Mount options: **TTL / Ergo Loupes**

Selective Color:



OTHERS



New Headstrap

AM630 / AM640 / AM559 / AM56279



Cross Screwdriver

HLP02 / HLP03 / HLP05 / GL8



Lens Cleaner

All Loupes



Hex Screwdriver

WHLP01



Straight Screwdriver

GL / KL Series Loupes



Glasses Bag

TTL Series Loupes

CLIPS



M01

M01 can be used with Amtech Loupes and other brands loupes(Carl Zeiss/Keeler/Heine/Perioptix/SurgiTel)
M01 适用于Amtech 或者其他品牌放大镜 (卡尔·蔡司/海涅/Perioptix/SurgiTel)



M02

M02 can be used with Amtech Loupes and other brands loupes(Carl Zeiss/Keeler/Heine/Perioptix/SurgiTel)
M02 适用于Amtech 或者其他品牌放大镜 (卡尔·蔡司/海涅/Perioptix/SurgiTel)



M03

M03 can be used with Amtech GL3/GL5/KL3 series Flip-up Loupes
M03 适用于Amtech GL3/GL5/KL3系列上翻式放大镜



M04

M04 can be used with Amtech GL3/GL5/KL3 series Flip-up Loupes
M04 适用于Amtech GL3/GL5/KL3系列上翻式放大镜



M06

M06 can be used with Amtech TTL series Loupes
M06 适用于Amtech TTL系列放大镜



M07

M07 can be used with Amtech TTL series Loupes
M07 适用于Amtech TTL系列放大镜



M08

M08 can be used with Amtech GL8 series Loupes
M08 适用于Amtech GL8系列放大镜



M09

M09 can be used with Amtech GL8 series Loupes
M09 适用于Amtech GL8系列放大镜



CASE

Each product has its own case to protect the Loupes from damage. Amtech's cases come in three series: Aluminum case, Fabric case and Metal case.

Aluminum case



Aluminum case
Ergo Loupes



Aluminum case
HLP03



Aluminum case C
Loupes



Aluminum case E
Loupes and Headlights



Aluminum case
Loupes and Headlights

Fabric case



Fabric case
New TTL



Fabric case
GL-MI



Fabric case B
TTL and GL



Fabric case A
KL and HLP02



Fabric case
Energy I



Fabric case
WHLP01



Fabric case
HLP05

Metal case



Metal case
TTL3 / TTL5 / TTL A1 / TTL A3