



*im*

intermezzo

FALL WINTER 2024  
COLLECTION



## Introducing the Fall Winter 2024 catalogue.

With our latest **Figure Skating Collection**, we embrace **new trends** and adapt to all skating forms, dance styles and disciplines.

We are very excited to launch an **Essential Collection** for our **Skating Community**:

- New line of **Basic Training Sets**
- The perfect **uniform styles** for all skating teams
- Comfortable and silhouette enhancing
- **Made of** one of our most recognized fabrics: **Meryl**
- Quick drying and stretchy fabric
- Available in 6 colours

**Core Collection.** Introducing two new dazzling colours of our best sellers to stand out on the ice rink.

**Colorado Collection.** This collection draws inspiration from timeless sports classics. New thin brushed fabric designs to empower the figure skater's movements.

Browse our **Core Catalogue 2024** for more skating essentials, tights & accessories.

As a final note, we would like to thank *Palacio de Hielo* in Madrid for allowing us to use their ice rink to bring our latest styles to life.

# Essential collection



6635  
5551



## Everly

5551

Leggings **cubretalón** de tiro alto con cintura ancha y bajo de silicona para cubrir el talón. **Costuras** a juego y logo en blanco.

*High-rise **heel-covering** leggings with a wide waistband and silicone band at the hem to cover the heel. **Matching seams** and white logo.*



## Elvira

6635

Top corto de manga larga con **nudo delantero**. Diseño favorecedor. Logo blanco en la espalda.

*Long-sleeve **twist** crop top. Flattering design. White logo at the back.*



COMPOSITION:

*Meryl* 92% Polyamide Meryl  
8% Elastane

SIZES: 4-6-8-10-12-XS-S-M-L-XL-XXL



## Erica

6637

Chaqueta corta efecto corsé con **costuras** a juego. **Diseño entallado** muy favorecedor. De manga larga y cuello alto con ojal en las mangas. Con cremallera gris y logo blanco.

*Corset full zip jacket with **matching seams**. Flattering **fitted design**. Cropped style with thumb loops. Grey zipper and white logo.*



6637  
5551

COMPOSITION:

*Meryl* 92% Polyamide Meryl  
8% Elastane

SIZES: 4-6-8-10-12-XS-S-M-L-XL-XXL

ESSENTIAL COLLECTION 7



## Esmee

6638

Chaqueta básica con **costuras** a juego. **Diseño entallado** muy favorecedor. De manga larga y cuello alto con ojal en las mangas. Con cremallera gris y logo blanco.

*Long-sleeved turtleneck jacket with **matching seams**. Flattering **fitted design**. Thumb loops. Grey zipper and white logo.*



6638  
5551

COMPOSITION:

*Meryl* 92% Polyamide Meryl  
8% Elastane

SIZES: 4-6-8-10-12-XS-S-M-L-XL-XXL



6634  
5551



## Ester

6634

Top corto básico de tirantes. Diseño favorecedor con cinturilla ancha. Con **copas extraíbles** en las tallas adultas. Escote y espalda circular. Logo blanco. Forro de tacto suave.

*Sport camisole crop top. Flattering design with wide waistband. **Removable cups** in adult sizes. Circular neckline and back. White logo. Soft lining.*



COMPOSITION:

*Meryl* 92% Polyamide Meryl  
8% Elastane

SIZES: 4-6-8-10-12-XS-S-M-L-XL-XXL

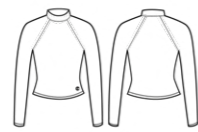


## Eulalia

6636

Camiseta con cuello alto de manga larga ajustada. Detalle de **costuras** a juego y logo en blanco.

*Fitted long-sleeved turtleneck shirt with **matching seams** and white logo.*



COMPOSITION:

*Meryl* 92% Polyamide Meryl  
8% Elastán / Elastane

SIZES: 4-6-8-10-12-XS-S-M-L-XL-XXL

## Edesia

5550

Leggings básicos de tiro alto con **costuras** a juego. Diseño favorecedor con cintura ancha. Logo blanco.

*High-rise leggings with **matching seams**. Flattering design with width waistband. White logo.*



COMPOSITION:

*Meryl* 92% Polyamide Meryl  
8% Elastane

SIZES: 4-6-8-10-12-XS-S-M-L-XL-XXL

## Eva

5552

Short estilo culotte de tiro alto con **costuras** a juego. Diseño favorecedor con cintura ancha. Logo blanco.

*High-rise culotte with **matching seams**. Flattering design with width waistband. White logo.*





6593  
5330

NEW COLOURS



### Amoli



6593

Top manga larga con **interior afelpado fino**. Goma con logo de Intermezzo en la cintura y ojal en las mangas.

*Long sleeve top **thin brushed fabric inside**. Elastic with Intermezzo logo on the waist and thumb loop.*

01	im	17	im	37	im
125	im	194	im	258	im
269	im				

### Agata



5330

Pantalón largo con **interior afelpado fino** de cinturilla ancha. Bajo ancho para cubrir el talón con banda de silicona. **Bolsillo** con goma del logo de Intermezzo.

*High-rise heel-covering leggings with silicone band. **Thin brushed fabric inside** & wide waistband. **Pocket** with elastic Intermezzo logo.*

17	im	37	im
194	im	258	im
		269	im

COMPOSITION:

**colorado** 80% Polyamide / 20% Elastane

SIZES: 4-6-8-10-12-XS-S-M-L-XL-XXL



### Bony

6604

Camiseta de manga larga ajustada con interior afelpado fino.

*Fitted long-sleeved Shirt. Thin brushed fabric inside.*



### Cintia

6618

Camiseta con cuello alto de manga larga ajustada con interior afelpado fino. Ojal en las mangas.

*Fitted long-sleeved turtleneck Shirt. Thin brushed fabric inside. Thumb loop.*



01	im
17	im
37	im
125	im
194	im
258	im
269	im

COMPOSITION:

**colorado** 80% Polyamide / 20% Elastane

SIZES: 4-6-8-10-12-XS-S-M-L-XL-XXL

# Colorado collection



## Eleanor

5554

Leggings  **cubretalón** de tiro alto y cintura ancha. Con  **interior afelpado fino** y bajo de silicona para cubrir el talón. Detalle de vivo en blanco.

*High-rise **heel-covering** leggings with a wide waistband, **thin brushed fabric inside** and silicone band at the hem to cover the heel. White piping detail.*



6641  
5554

COMPOSITION:

**colorado** 80% Polyamide / 20% Elastane

SIZES: 4-6-8-10-12-XS-S-M-L-XL-XXL



6640  
5554



## Eusebia

6640

Top de manga larga con **interior afelpado fino**, ojal en las mangas y escote cuadrado. Detalles de vivo en blanco.

*Long-sleeved top with a **thin brushed fabric inside**, thumb holes in the sleeves, and square neckline. White piping details.*



37

258

269

COMPOSITION:

**colorado** 80% Polyamide / 20% Elastane

SIZES: 4-6-8-10-12-XS-S-M-L-XL-XXL

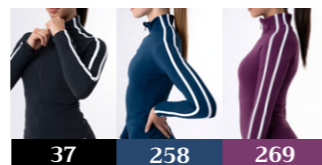


## Elia

6641

Chaqueta con **interior afelpado fino**. Diseño entallado muy favorecedor. De manga larga y cuello alto. Con cremallera a tono y detalles de vivo en blanco.

*Fitted jacket with **thin brushed fabric inside**. Flattering design with long sleeves, high turtleneck, matching zipper, and white piping details.*



COMPOSITION:

**colorado** 80% Polyamide / 20% Elastane

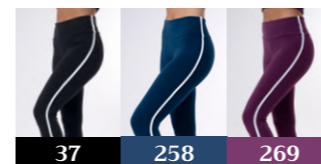
SIZES: 4-6-8-10-12-XS-S-M-L-XL-XXL

## Esmeralda

5553

Leggings básicos de tiro alto y cintura ancha con **interior afelpado fino**. Detalle de vivo en blanco.

*High-rise basic leggings with a wide waistband and **thin brushed fabric inside**. White piping detail.*

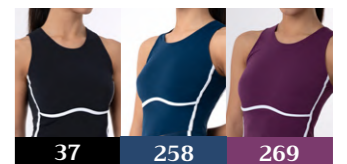


## Elizabeth

6639

Top sin mangas y cuello redondo con **interior afelpado fino**. Detalles de vivo en blanco.

*Tank top with a round neckline and **thin brushed fabric inside**. White piping details.*



COMPOSITION:

**colorado** 80% Polyamide / 20% Elastane

SIZES: 4-6-8-10-12-XS-S-M-L-XL-XXL

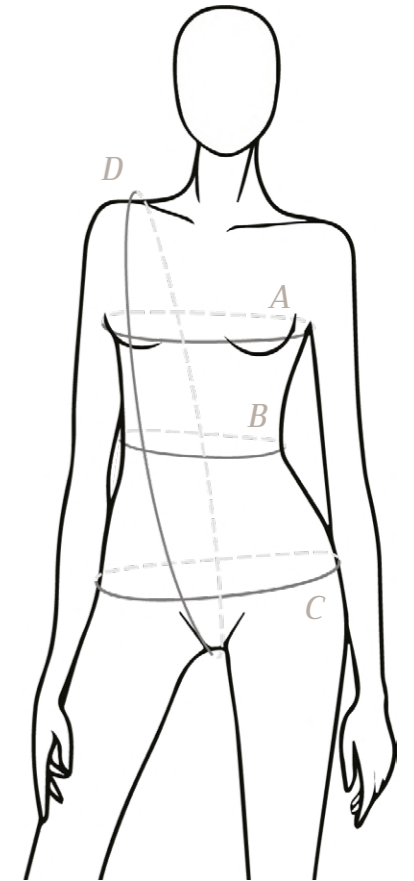
# Index

	<b>5330 AGATA</b> SIZES 4-XXL P. 15	Core Collection Heel-cover pants Thin brushed fabric	17 royal blue 37 black 194 violet 258 blue aqua 269 plum		<b>6634 ESTER</b> SIZES 4-XXL P. 11	Essential Collection Camisole Top Meryl	15 light blue 19 navy, 37 black 172 charcoal grey 197 seaweed 253 pansy purple
	<b>5550 EDESIA</b> SIZES 4-XXL P. 13	Essential Collection Leggings Meryl	15 light blue 19 navy 37 black 172 charcoal grey 197 seaweed 253 pansy purple		<b>6635 ELVIRA</b> SIZES 4-XXL P. 5	Essential Collection Long Sleeve Twist Top Meryl	15 light blue 19 navy 37 black 172 charcoal grey 197 seaweed 253 pansy purple
	<b>5551 EVERLY</b> SIZES 4-XXL P. 5	Essential Collection Heel-cover pants Meryl	15 light blue 19 navy 37 black 172 charcoal grey 197 seaweed 253 pansy purple		<b>6636 EULALIA</b> SIZES 4-XXL P. 12	Essential Collection Turtleneck Shirt Meryl	15 light blue 19 navy 37 black 172 charcoal grey 197 seaweed 253 pansy purple
	<b>5552 EVA</b> SIZES 4-XXL P. 13	Essential Collection Short culotte Meryl	15 light blue 19 navy 37 black 172 charcoal grey 197 seaweed 253 pansy purple		<b>6637 ERICA</b> SIZES 4-XXL P. 7	Essential Collection Corset Jacket Meryl	15 light blue 19 navy 37 black 172 charcoal grey 197 seaweed 253 pansy purple
	<b>5553 ESMERALDA</b> SIZES 4-XXL P. 23	Colorado Collection Leggings Thin brushed fabric	37 black 258 blue aqua 269 plum		<b>6638 ESMEE</b> SIZES 4-XXL P. 9	Essential Collection Jacket Meryl	15 light blue 19 navy, 37 black 172 charcoal grey 197 seaweed 253 pansy purple
	<b>5554 ELEANOR</b> SIZES 4-XXL P. 19	Colorado Collection Heel-cover pants Thin brushed fabric	37 black 258 blue aqua 269 plum		<b>6639 ELIZABETH</b> SIZES 4-XXL P. 23	Colorado Collection Tank top Thin brushed fabric	37 black 258 blue aqua 269 plum
	<b>6593 AMOLI</b> SIZES 4-XXL P. 15	Core Collection Long sleeve Top Thin brushed fabric	01 white 17 royal blue 37 black 125 coral 194 violet 258 blue aqua 269 plum		<b>6640 EUSEBIA</b> SIZES 4-XXL P. 21	Colorado Collection Long sleeve top Thin brushed fabric	37 black 258 blue aqua 269 plum
	<b>6604 BONY</b> SIZES 4-XXL P. 17	Core Collection Long sleeve Shirt Thin brushed fabric	01 white 17 royal blue 37 black 125 coral 194 violet 258 blue aqua 269 plum		<b>6641 ELIA</b> SIZES 4-XXL P. 22	Colorado Collection Jacket Thin brushed fabric	37 black 258 blue aqua 269 plum
	<b>6618 CINTIA</b> SIZES 4-XXL P. 17	Core Collection Turtleneck Shirt Thin brushed fabric	01 white 17 royal blue 37 black 125 coral 194 violet 258 blue aqua 269 plum				

# Size Guide

## Mujer / Women

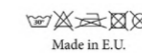
TALLA / SIZE			XS	S	M	L	XL	XXL
A	Pecho / Chest	(cm.)	76-81	82-87	88-91	92-98	99-105	106-113
		(in.)	30-32	32-34	34-36	36-38	38-42	42-44
B	Cintura / Waist	(cm.)	56-63	62-69	68-73	72-79	78-87	86-93
		(in.)	22-26	24-27	26-29	28-31	30-34	33-36
C	Cadera / Hip	(cm.)	84-89	89-94	94-99	99-105	105-110	111-118
		(in.)	33-35	35-37	37-39	39-41	41-43	43-46
D	Tiro / Girth	(cm.)	132-140	140-148	148-155	156-160	159-165	165-173
		(in.)	52-55	55-58	58-61	61-63	62-65	65-68



## Infantil / Children

TALLA / SIZE	4	6	8	10	12	
Edad / Age	3-4	5-6	7-8	9-10	11-12	
Estatura / Height	(cm.)	90-105	106-117	118-129	130-141	142-152
	(in.)	35-41	41-46	46-51	51-55	55-60
Peso / Weight	(kg.)	12-19	18-25	24-31	30-35	36-44
	(lb)	26-41	39-55	54-68	66-78	79-97

## Medias / Tights



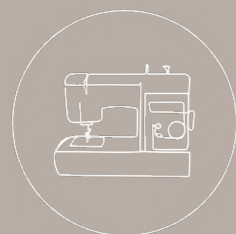
TALLA / SIZE	4	6	8	10	12	S	M	L	XL	XXL	
Altura / Height	(cm.)	90-112	107-124	119-136	130-148	142-155	150-160	157-167	165-175	170-180	175-185
	(in.)	35"-44"	42"-49"	47"-49"	51"-58"	56"-61"	4,11"-5,3"	5,2"-5,6"	5,5"-5,9"	5,7"-5,11"	5,9"-6,1"
Peso / Weight	(kg.)	12-19	18-25	24-31	30-35	36-44	43-51	50-58	57-66	65-74	73-81
	(lbs.)	26-42	40-55	53-68	66-77	79-97	95-112	110-128	126-146	143-163	161-179

# im

## #WeCare

Our steps go beyond quality, comfort, and beauty. At Intermezzo, we seek a balance between fashion & sustainability; between consumption and responsibility. Because in fashion, as in dance, every step is important.

### Conscious Dancewear



Locally Made



European Fabrics



Ethical Business



Conscious Fashion

We design, manufacture and sell **dancewear** for all disciplines. Malltex, S.A. was born in 1927 since then the company has been focused on dancewear. We offer a large range of products and our **knitwear** in particular offers really unique garments. We have a beautiful leotard collection and all kind of accessories **for dancers & figure skaters.**

Dance is an art and Intermezzo makes your dreams come true. **Quality, comfort and beauty** are our values and essence. Art requires creativity and discipline, take care of all details and love what you do. We do our best to offer excellent products on time service.



Follow Us  
@intermezzoskating



*im*

intermezzo

MALLTEX, S.A.  
Borges Blanques, 86  
08227 Terrassa, Barcelona - Spain

intermezzodancewear.com  
Phone (+34) 93 735 07 52 / (+34) 660 55 52 26  
info@intermezzo.es



**INNOVATIVE SME**  
Valid until Nov 22nd 2025

