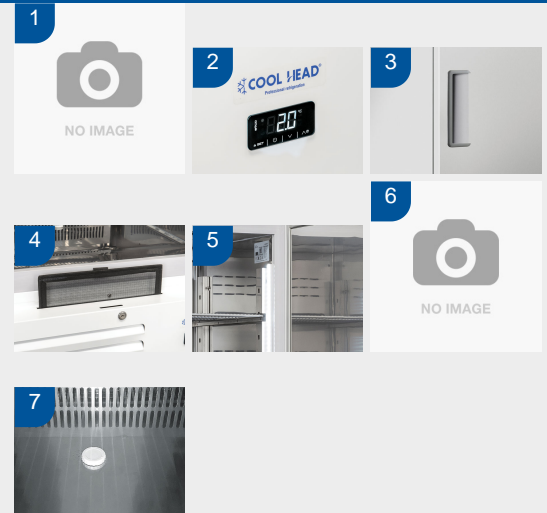




## DETAILS



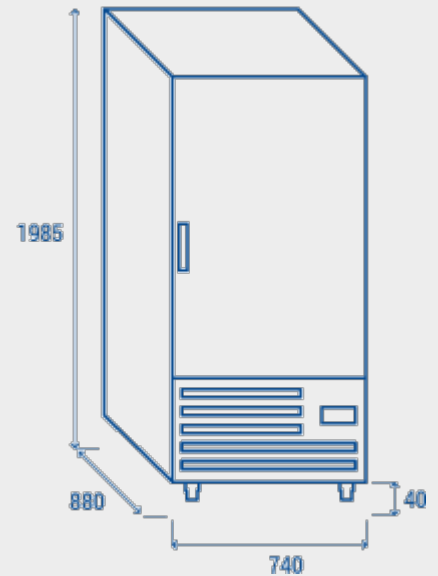
## GENERAL FEATURES

EURONORM refrigerated upright cabinet	•
White coated steel for external side and stainless steel for inner side	•
Static cooling system with fan assisted cooling	•
Condenser with anti-corrosion treatment	•
Bottom side engine room (for comformable storage goods in the chamber)	•
Automatic compressor cycle defrost	•
Digital thermostat with "opening door" and "Hi temperature" alarm	•
Foaming Agent Cyclopentane (80mm)	•
Removable Gasket	•
LED light and lock fitted as standard	•
Door: Self closing and reversible door fitted as standard	•
Set of 10 slides for bakery tray 600X400	•
Plastic thermal-braker anti-condensation as chamber body frame	•
N.4 Adjustable feet - S/S feet or castor with brake (Option)	•

## TECHNICAL SPECIFICATION

INNER DEPTH	710 mm
INNER HEIGHT	1430 mm
INNER WIDTH	580 mm
DEPTH	880 mm
HEIGHT	2025 mm
WIDTH	740 mm
KW/24H	2.5 Kw
CAPACITY	600 L
NOISE LEVEL	48 dB(A)
CONSUMPTION	210 W
NET WEIGHT	150 Kg
TEMPERATURE RANGE	+2° ~ +8°C

## SIZES



## CERTIFICATIONS

