

Tranquil-x

CONDENSATE PUMP

- Low noise
- Safe and reliable water detection
- Large flow
- Automatic flow adjustment
- Convenient cleaning

Thank you for purchasing our new condensate pump - Tranquil-X.

Tranquil-X uses a capacitive sensor to detect water instead of the traditional float and hall element. Automatic flow adjustment greatly reduces the function noise and extend the service life of the pump and electronic components, and with counter to record running time and alarm.



Max.flow
40 L/H



Sound level
<19 dB(A) @ 1M

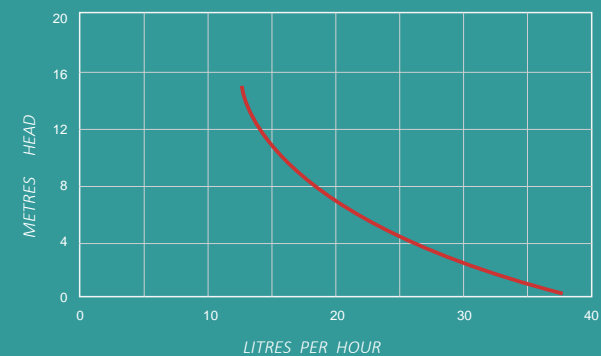


Max.head
20 M

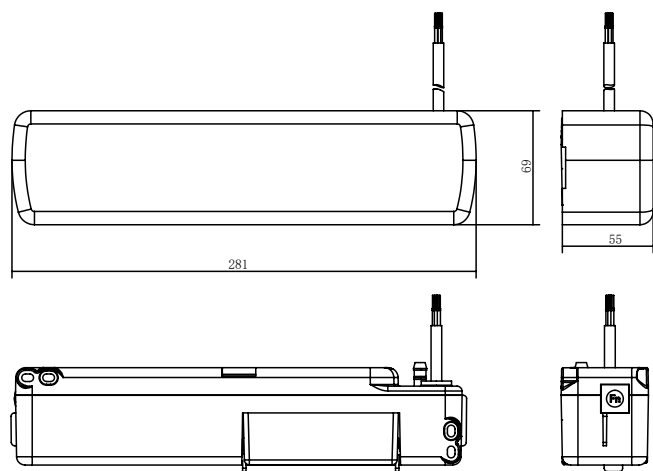
> TECHNICAL DATA

- Power supply: 100-240V AC 50/60Hz < 4W
- Max.flow: 40L/H, range from 20-40L/H
- Noise: 17-19dB(A)@1m
- Max.head: 20 M
- Max.suction lift: 2 M
- Max.unit output: 46 kw / 157,000 Btu/h
- Max.water temperature: 40 C
- Discharge tube: 6mmID
- Class: II appliance
- Protection: Fully potted, IP-45
- LxWxH: 281mm x 55mm x 69mm

TYPICAL PERFORMANCE <

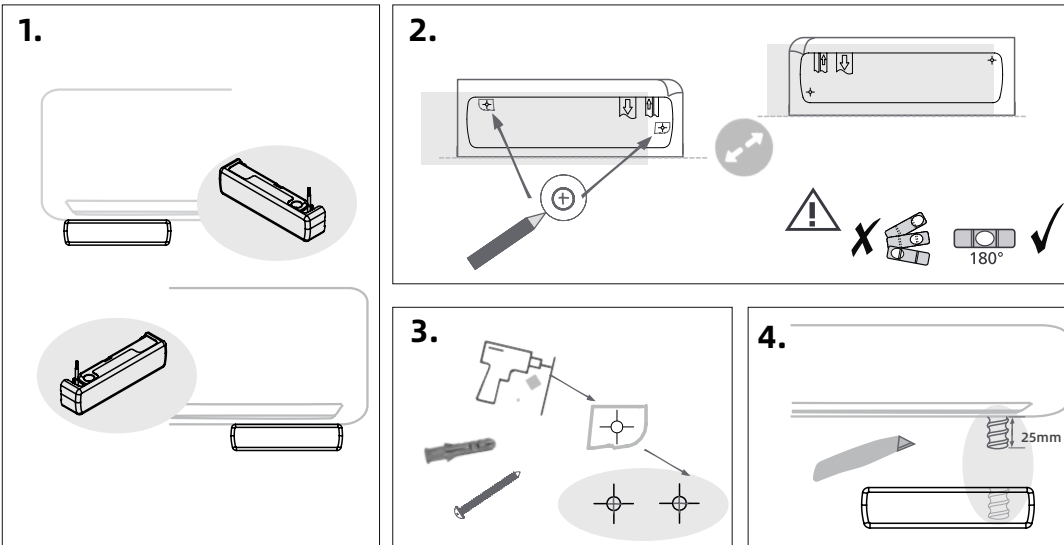


① IN THE BOX

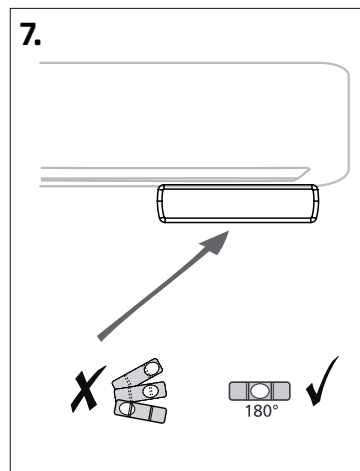
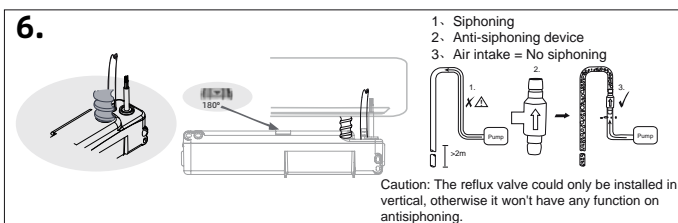
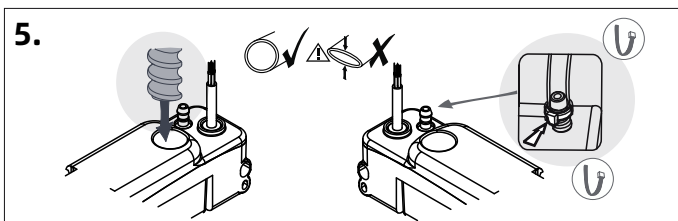


- 1A fuse × 1
- Installation screw × 2
- Expansion plug × 2
- Level gauge × 1
- Connection clamp × 1
- Nylon clamps 200mmx4mm × 2
- Drilling schematic template × 1
- Anti-siphon valve × 1

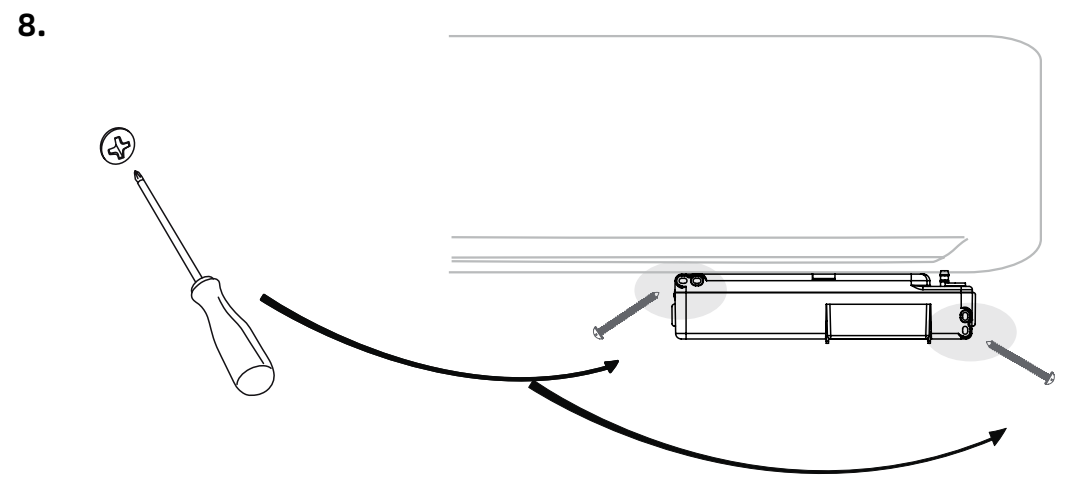
② INSTALLATION



② INSTALLATION



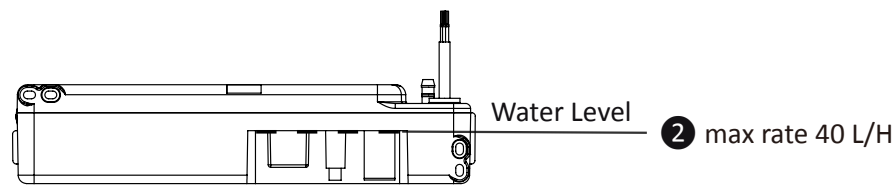
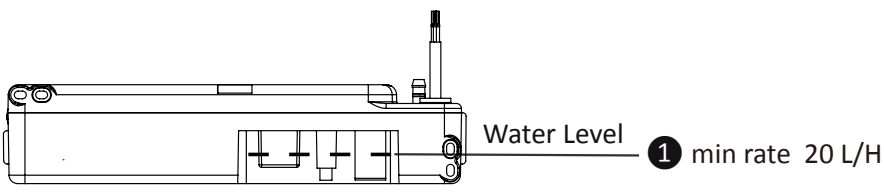
② INSTALLATION





③ FUNCTION

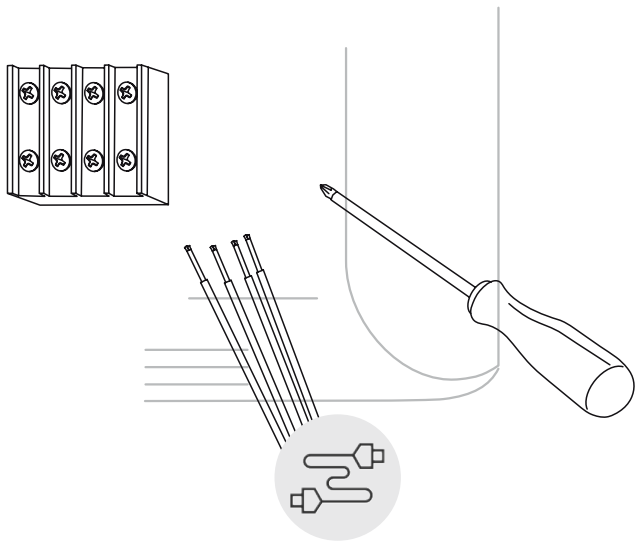
The pump's flow rate automatically adjusts with changes in water level.



Fn for Manual drainage.

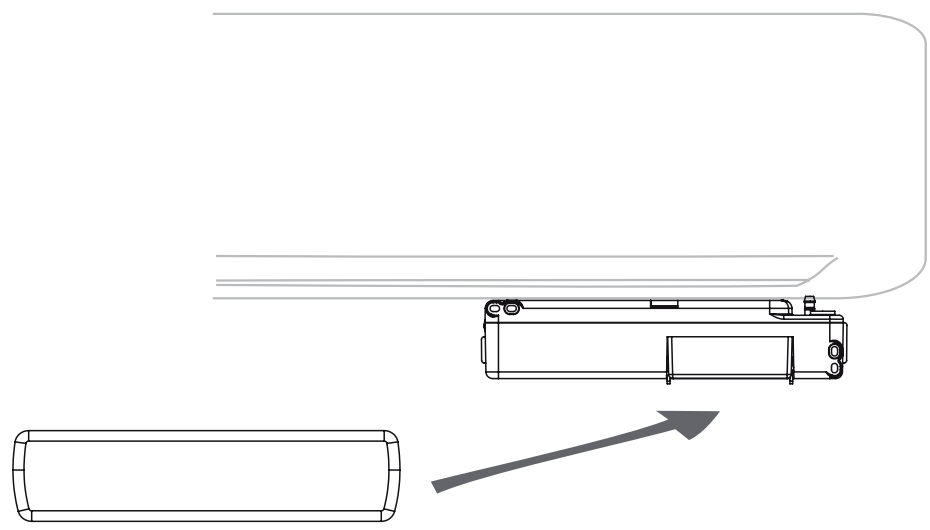
② INSTALLATION

9.



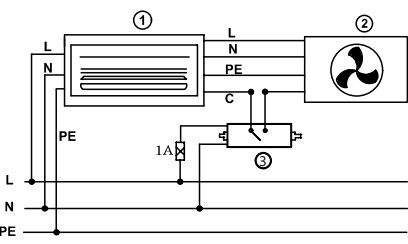
② INSTALLATION

10.



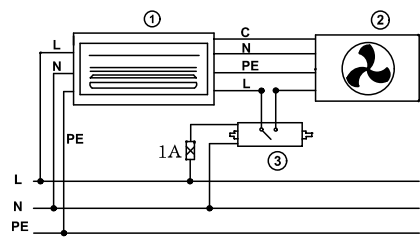
④ INSTALLATION

(1) Signal-line connection



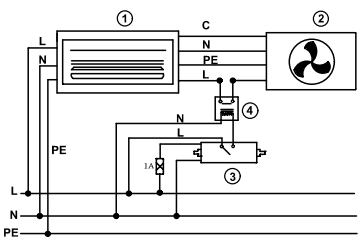
100-240V AC 50/60Hz

(2) Strong electric control connection (current <3A)



100-240V AC 50/60Hz

(3) Strong electric control connection (current >3A)



100-240V AC 50/60Hz

L: brown
N: blue
NC: black
C: black

- ① indoor unit
- ② outdoor unit
- ③ pump unit
- ④ contactor relay (normally open)

⑤ SAFETY INSTRUCTIONS

- Read instructions carefully before attempting to install, operate or service. pump installation, connections or any other service should be done by qualified engineers.
- This pump has not been investigated for use in swimming pool or marine areas.
- Do not install or use the pump if the supply cord or pump itself is broken.
- The Tranquil Pump has been evaluated for use with water only.
- Ensure the pump is disconnected from the mains supply before carrying out any adjustments or servicing
- Suitable for indoor use only