

# User's Guide

---

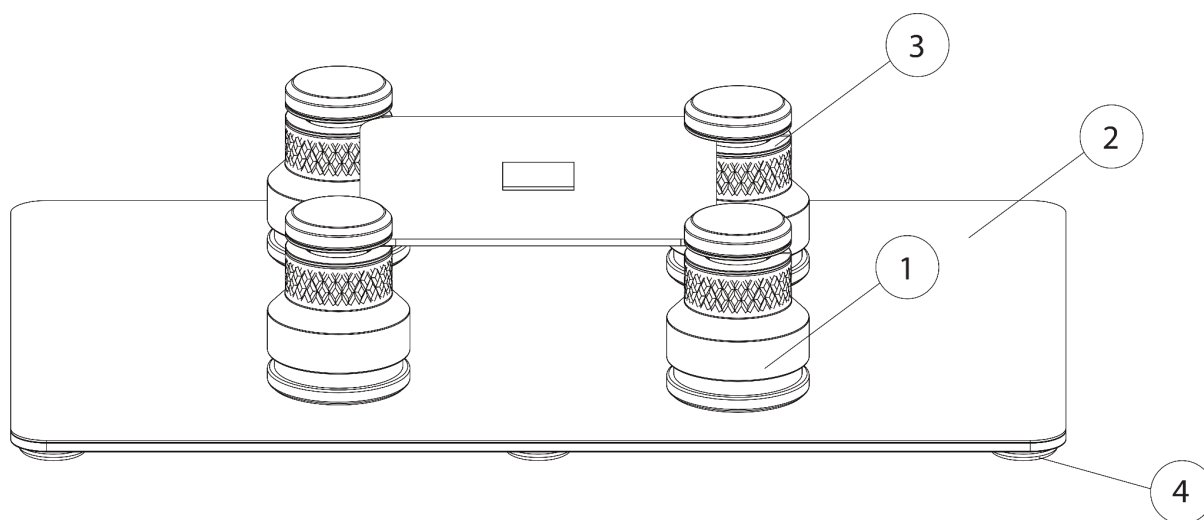
## PCBite kit - Low profile

### Introduction

**PCBite Kit – Low profile** is a compact, handsfree solution for soldering, inspecting, and testing small PCBs - ideal for use under a microscope or in tight spaces like a TEM-cell.

Each holder has a strong, well-balanced magnet and a smooth bottom cap that makes it easy to slide. The “jaw” can open wide and a spring ensures a really strong locking force.

The baseplate is dual-sided: one side has an insulating layer that adds safety when working with powered circuits, while the other is mirror-polished to make it easy to inspect the underside of your circuit board.



### Overview

1. Holder
2. Insulated base plate\*
3. Insulation washer
4. Rubber feet\*

\* Only included with kit

## Getting started - Baseplate

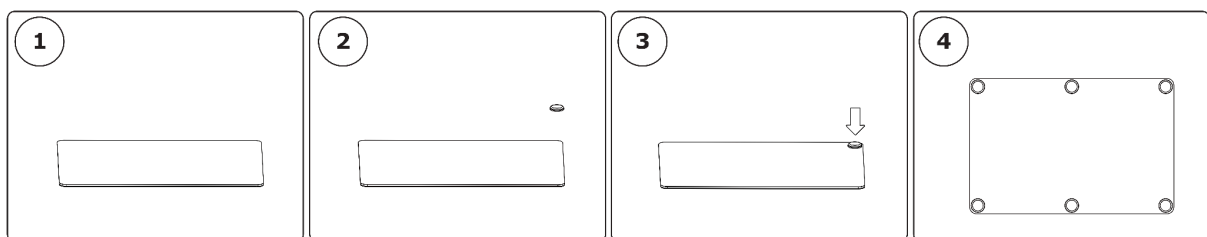
The baseplate features two sides, each designed for different applications and user preferences.

- **Insulated Side:** One side is equipped with a plastic insulation cover to provide electrical insulation. Note: Do not use this side in environments exceeding 85°C (185°F), as the cover may degrade or deform.
- **Metal Side:** The other side is a mirror-polished metal surface, ideal for soldering. Be sure to remove the protective film before use. To maintain a clear and polished surface, use a microfibre cloth or a similar soft cleaning material.

## Getting started - Rubber feet assembly

The rubber feet keep the base plate securely in place while working

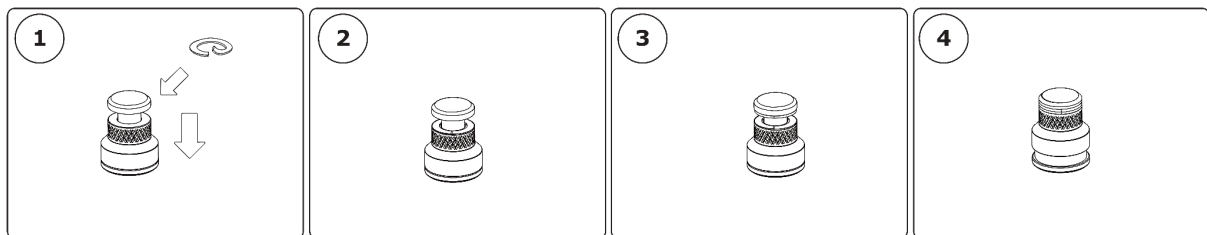
1. Choose the side of the base plate that will serve as the primary surface. Place this side face-down on a clean, flat surface. Ensure the surface is free of dust and debris.
2. Pick up one rubber foot and identify the adhesive side on its underside.
3. Press the adhesive side of the rubber foot firmly onto the underside of the base plate. Apply steady pressure for at least 5 seconds to ensure a strong bond.
4. Attach the remaining rubber feet in the same manner. Distribute a total of six rubber feet evenly across the underside of the base plate to ensure optimal support and stability.



## Getting started - Insulation washer assembly

Add extra isolation during measurements with the washers.

1. Pick up the washer end and press the sleeve downwards. Notice the open slot on the washer
2. Slide the washer around the pin and place the adhesive towards the lower aluminium surface
3. Repeat for upper side
4. Release the spring loaded sleeve

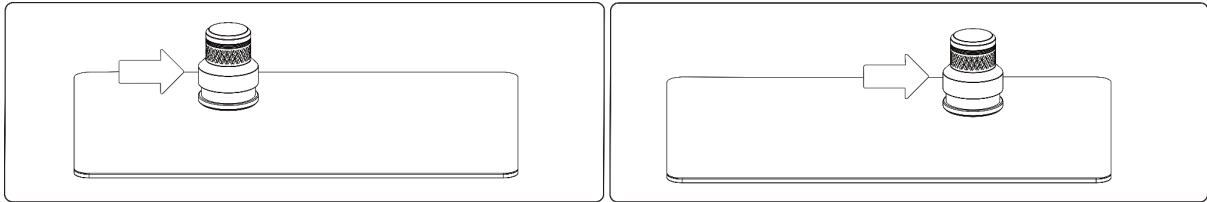


Do not use the washers for environments above 85°C (185°F).

## Operating Instructions

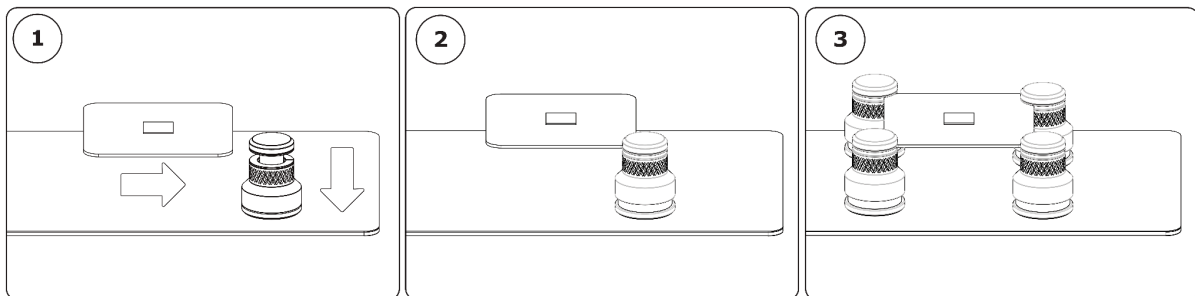
**Position the holder** - Place the holder on the base plate and the magnet will keep it in place

**Reposition the holder** - Slide the low friction holder on the base plate



### Fasten a circuit board

1. Press the sleeve downwards and insert the circuit board
2. Release the spring loaded sleeve gently and fix the circuit board
3. Slide the required number of holders into position. Make sure the holders are evenly distributed around the circuit board



## Warranty

Sensepeek products are warranted for 12 months from the date of purchase. The warranty covers defects in material and workmanship. This warranty does not apply to components (parts and accessories) subject to natural and normal wear and tear. This warranty does not in any way limit the rights you have under mandatory law.