

mahATN
creative cover materials
since 1810

STOFFE / FABRICS

LAUFEN
LAUFEN MEDIUM
LAUFEN PLUS

858x, 859x & 860x

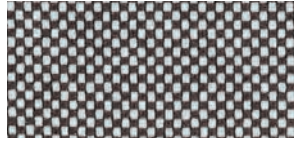
TREVIRA CS

LAUFEN PLUS



860 x 60079

LAUFEN MEDIUM



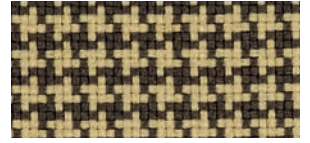
859 x 60079

LAUFEN

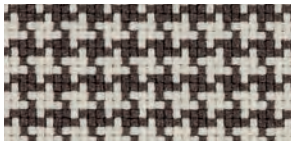


858 x 60079

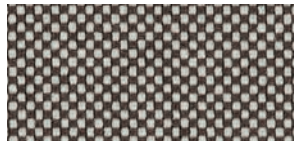
LAUFEN PLUS



860 x 61142



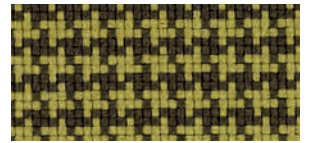
860 x 61138



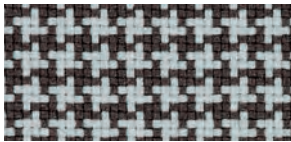
859 x 61138



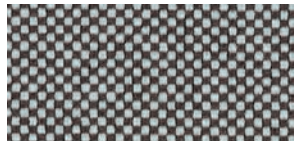
858 x 61138



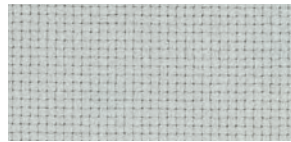
860 x 62071



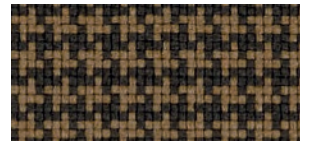
860 x 60093



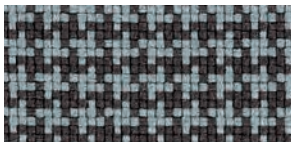
859 x 60093



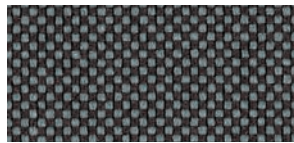
858 x 60093



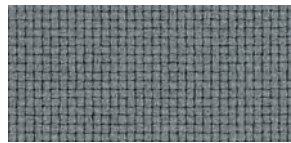
860 x 61143



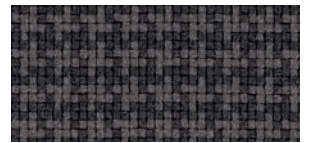
860 x 60083



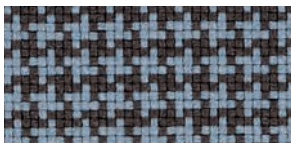
859 x 60083



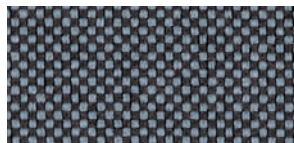
858 x 60083



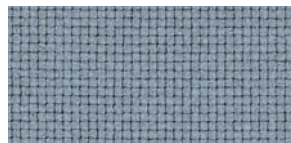
860 x 61140



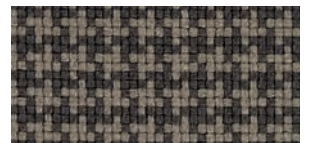
860 x 60080



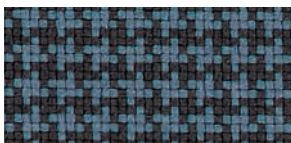
859 x 60080



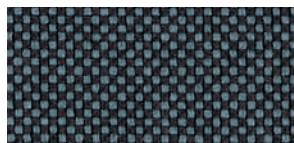
858 x 60080



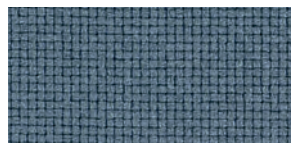
860 x 61139



860 x 60081



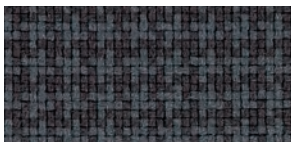
859 x 60081



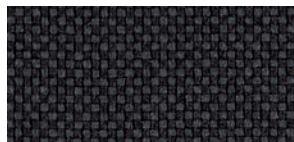
858 x 60081



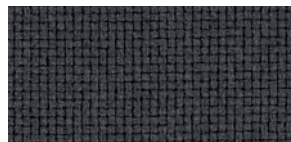
860 x 66140



860 x 60084



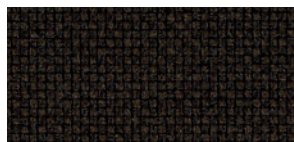
859 x 60084



858 x 60084



860 x 61141



859 x 61141

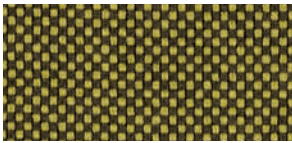


858 x 61141

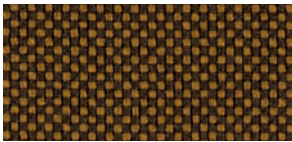
LAUFEN MEDIUM



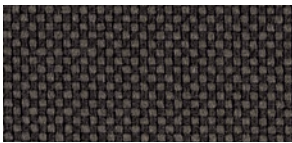
859 x 61142



859 x 62071



859 x 61143



859 x 61140



859 x 61139

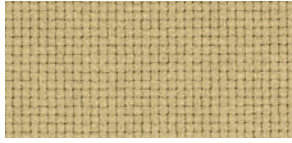


859 x 66140

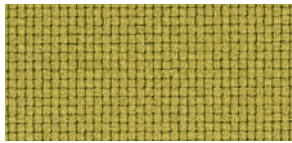


859 x 66134

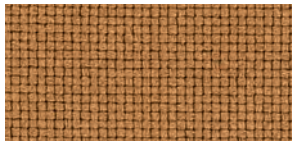
LAUFEN



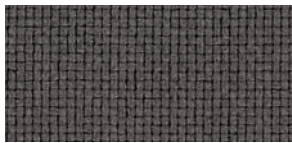
858 x 61142



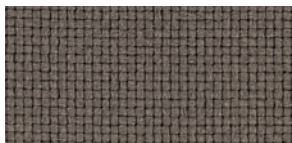
858 x 62071



858 x 61143



858 x 61140



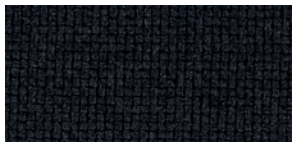
858 x 61139



858 x 66140

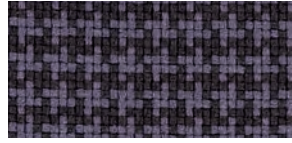


858 x 66134

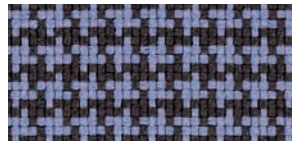


858 x 60999

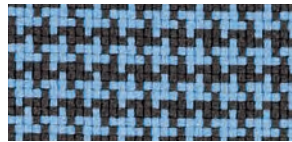
LAUFEN PLUS



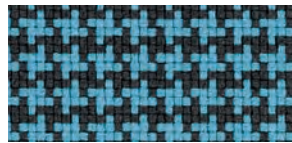
860 x 65086



860 x 65085



860 x 66135



860 x 67070



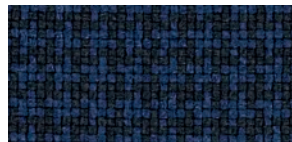
860 x 66136



860 x 66139



860 x 66137

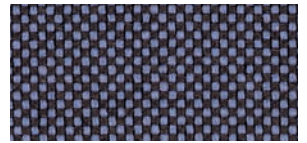


860 x 66138

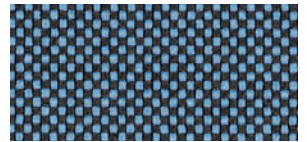
LAUFEN MEDIUM



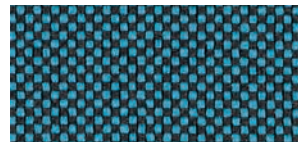
859 x 65086



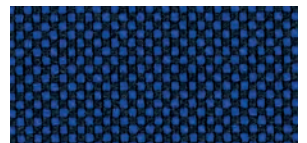
859 x 65085



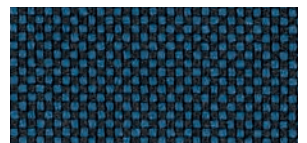
859 x 66135



859 x 67070



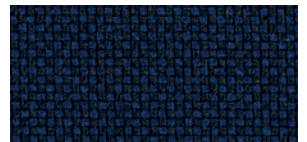
859 x 66136



859 x 66139

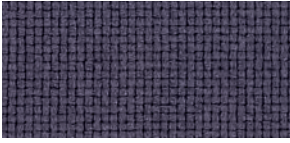


859 x 66137

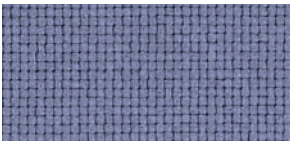


859 x 66138

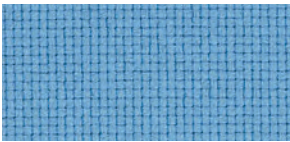
LAUFEN



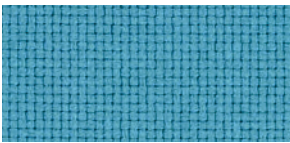
858 x 65086



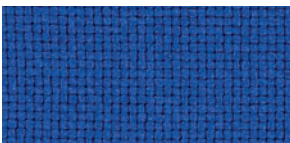
858 x 65085



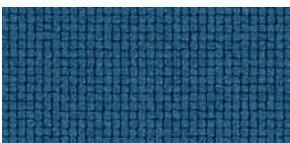
858 x 66135



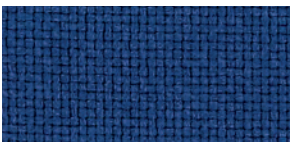
858 x 67070



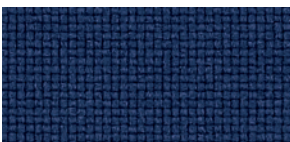
858 x 66136



858 x 66139

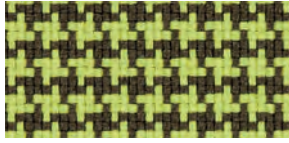


858 x 66137

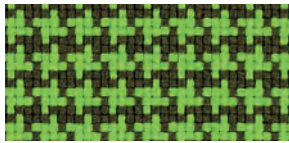


858 x 66138

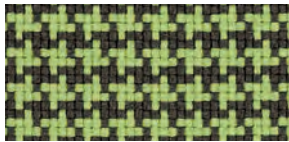
LAUFEN PLUS



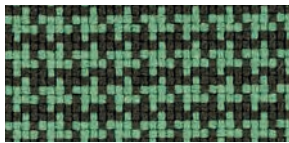
860 x 68170



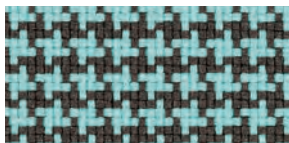
860 x 68154



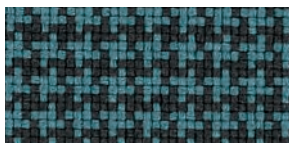
860 x 68153



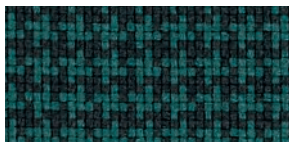
860 x 68169



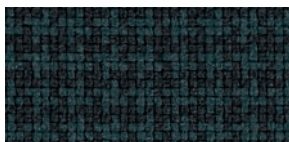
860 x 68168



860 x 67071

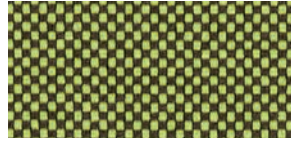


860 x 68152

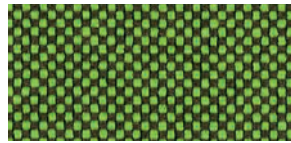


860 x 68149

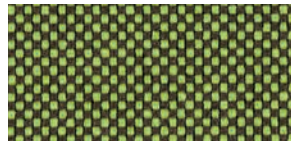
LAUFEN MEDIUM



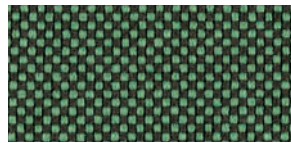
859 x 68170



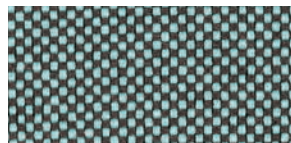
859 x 68154



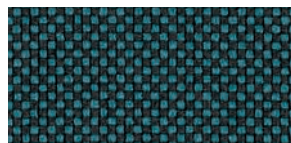
859 x 68153



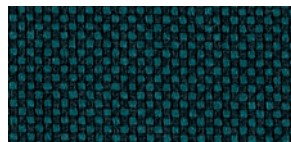
859 x 68169



859 x 68168



859 x 67071

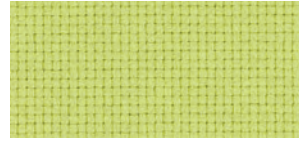


859 x 68152

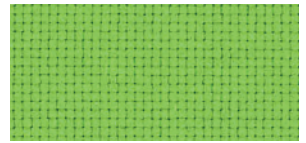


859 x 68149

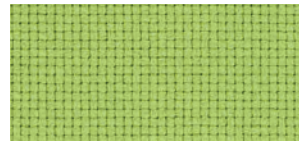
LAUFEN



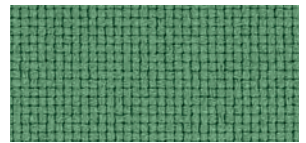
858 x 68170



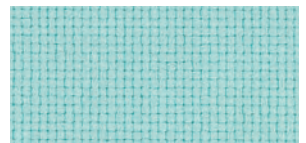
858 x 68154



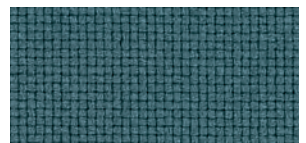
858 x 68153



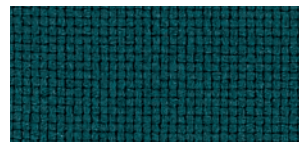
858 x 68169



858 x 68168



858 x 67071

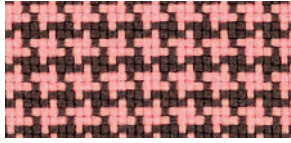


858 x 68152

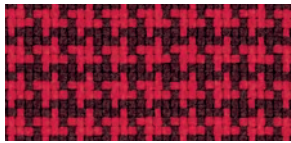


858 x 68149

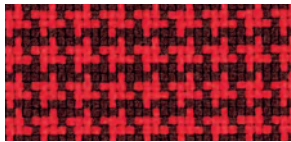
LAUFEN PLUS



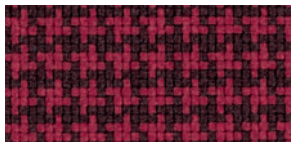
860 x 64183



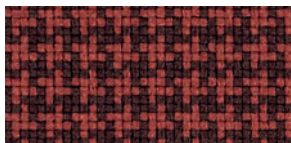
860 x 64175



860 x 64171



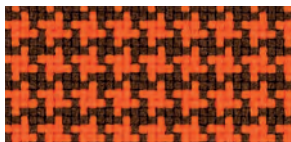
860 x 64172



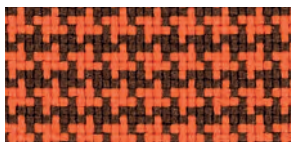
860 x 61144



860 x 61145

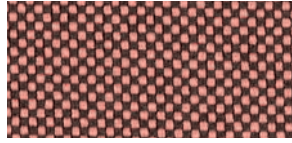


860 x 63079

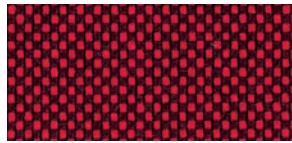


860 x 63080

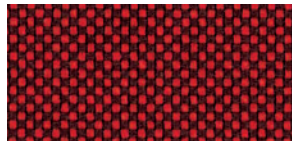
LAUFEN MEDIUM



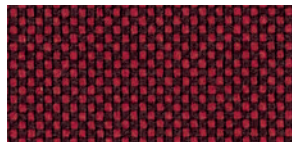
859 x 64183



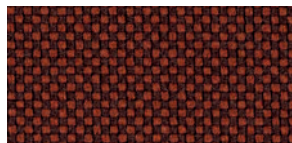
859 x 64175



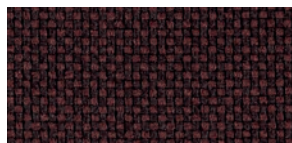
859 x 64171



859 x 64172



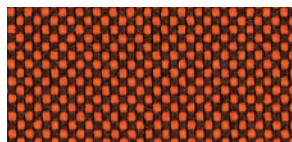
859 x 61144



859 x 61145

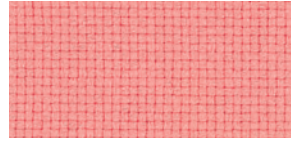


859 x 63079

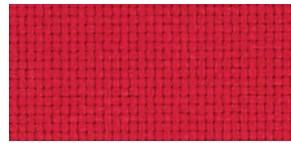


859 x 63080

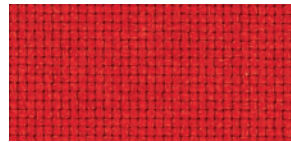
LAUFEN



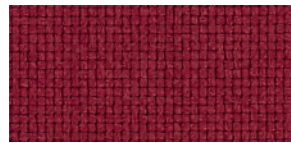
858 x 64183



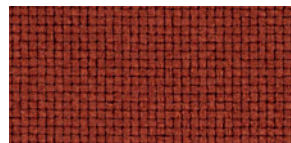
858 x 64175



858 x 64171



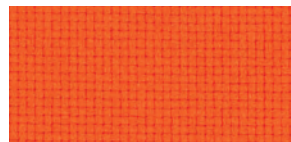
858 x 64172



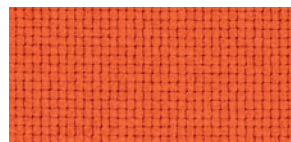
858 x 61144



858 x 61145

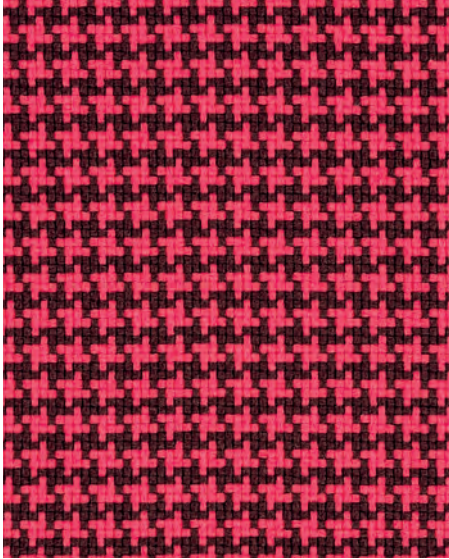


858 x 63079



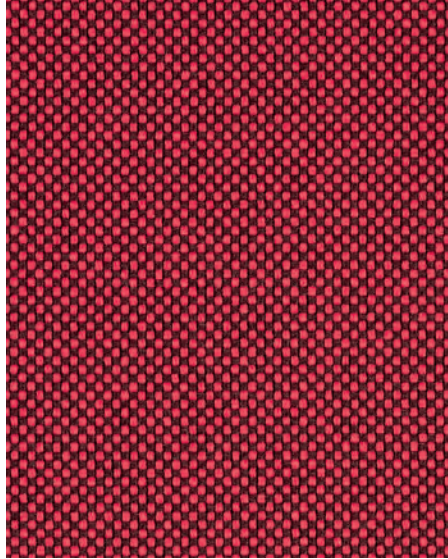
858 x 63080

LAUFEN PLUS



860 x 64174

LAUFEN MEDIUM







859 x 64174

LAUFEN







858 x 64174





LAUFEN PLUS / LAUFEN MEDIUM / LAUFEN 860x... / 859x... / 858x...

		
Produktspezifikation	Verwendungsbereich	Objektqualität
	Material	100 % Trevira CS
	Gewicht	435 g/lm
	Breite	140 cm
	Scheuerfestigkeit	Laufen Plus/Medium: 80.000 Scheuertouren / Laufen: 100.000 Scheuertouren: EN ISO 12947-2 (Martindale)
	Pilling	5 Skala: 1-5, Max. 5 - EN ISO 12945-2
	Lichtechtheit	5-8 Skala: 1-8, Max. 8 - EN ISO 105 - B02
	Reibechtheit	4-5/4-5 Skala: 1-5, Max. 5 - EN ISO 105x12 (nass/trocken)
	Reinigung	40°C  Einlaufen: max. 1,5% • 60°C  Einlaufen: max. 2,5% • 74°C  Einlaufen: max. 3,5%
	Flammhemmende Ausrüstung	EN 1021 - 1 & 2 • BS 5852, Crib 5 • BS 5852 - 0 & 1 • BS 7176 Medium hazard • DIN 4102 B1 • NFP 92-503/504/505 M1 • UNI 9175 Class 1.IM • CA TB 117 • FAR 25.853 • DIN EN 13501-1 B-s1, d0 • ÖNORM B 3825 B1 - 3800-Q1. Erfüllt auch andere Feuertests. Schwerentflammbarkeit hängt vom verwendeten Schaum und der schwerentflammbaren Ausrüstung ab.

Alle Informationen: Änderungen und Irrtum vorbehalten. Chargenbedingte Farbabweichungen sind möglich.

		
Product-specifications	Fields of application	Contract quality
	Material	100 % Trevira CS
	Weight	435 g/lm
	Width	140 cm
	Abrasion resistance	Laufen Plus/Medium: 80.000 rubs / Laufen: 100.000 rubs: EN ISO 12947-2 (Martindale)
	Pilling	5 scale: 1-5, Max. 5 - EN ISO 12945-2
	Colour fastness to light	5-8 scale: 1-8, Max. 8 - EN ISO 105 - B02
	Colour fastness to rubbing	4-5/4-5 scale: 1-5, Max. 5 - EN ISO 105x12 (wet/dry)
	Cleaning	40°C  Shrinkage: max. 1,5% • 60°C  Shrinkage: max. 2,5% • 74°C  Shrinkage: max. 3,5%
	Flammability	EN 1021 - 1 & 2 • BS 5852, Crib 5 • BS 5852 - 0 & 1 • BS 7176 Medium hazard • DIN 4102 B1 • NFP 92-503/504/505 M1 • UNI 9175 Class 1.IM • CA TB 117 • FAR 25.853 • DIN EN 13501-1 B-s1, d0 • ÖNORM B 3825 B1 - 3800-Q1. Will also pass other flammability standards. Flame retardant performance is dependent upon the foam used and fireproof treatment.

All information: subject to change and errors. Consider colour differences between production lots.

		
Specifications de produit	Application	Collectivité
	Composition	100 % Trevira CS
	Poids	435 g/lm
	Largeur	140 cm
	Résistance à l'usure	Laufen Plus/Medium: 80.000 tours / Laufen: 100.000 tours: EN ISO 12947-2 (Martindale)
	Boulochage	5 échelle: 1-5, Max. 5 - EN ISO 12945-2
	Résistance à la lumière	5-8 échelle: 1-8, Max. 8 - EN ISO 105 - B02
	Résistance des couleurs au frottement	4-5/4-5 échelle: 1-5, Max. 5 - EN ISO 105x12 (mouillé/sec)
	Nettoyage	40°C  Rétrécissement: max. 1,5% • 60°C  Rétrécissement: max. 2,5% • 74°C  Rétrécissement: max. 3,5%
	Inflammabilité	EN 1021 - 1 & 2 • BS 5852, Crib 5 • BS 5852 - 0 & 1 • BS 7176 Medium hazard • DIN 4102 B1 • NFP 92-503/504/505 M1 • UNI 9175 Class 1.IM • CA TB 117 • FAR 25.853 • DIN EN 13501-1 B-s1, d0 • ÖNORM B 3825 B1 - 3800-Q1. Peut également être conforme à d'autres standards d'inflammabilité. Le niveau de résistance au feu dépend de la mousse utilisée et de l'ignifugation.

Toutes les informations: sous réserve de modifications et d'erreurs. Il est possible qu'il y ait une légère différence de couleur d'une production à l'autre.

