

# RESET TRIGGER SYSTEM

for Glock



Gen 5

**Installation & User Guide**

# INTRODUCTION

Thank you for purchasing our Reset Trigger System for Glock handguns. This system is the most effective dry fire training system available on the market globally.

The system resets your Glock's trigger and allow you to pull firearms rapidly without having to cycle the slide. Additionally, it activates Modified Striker Assembly to engage Laser Ammo's surestrike laser cartridge to pulse a powerful laser beam every time you pull the trigger.

# **SAFETY FIRST**

**The Reset Trigger System is compatible with Glock handguns only.**

Use of this system is intended to enhance your hand-eye coordination, as well as improve muscle memory.

The manufacturers would like to stress that this comprehensive training system is not a toy. You've purchased and are using a real handgun to simulate live fire. Ensure practice firing is done in a safe and controlled environment. Always be aware of the fact that you are using a real handgun to simulate live fire and individuals around you, or who happen to see you firing, may not understand that you are practicing.

**As with any firearm, under no circumstance should you point this device at anybody or anything at any time that you do not intend on damaging.**

It is critical to adhere to the four basic principles of firearm safety when using the Glock Reset Trigger System:

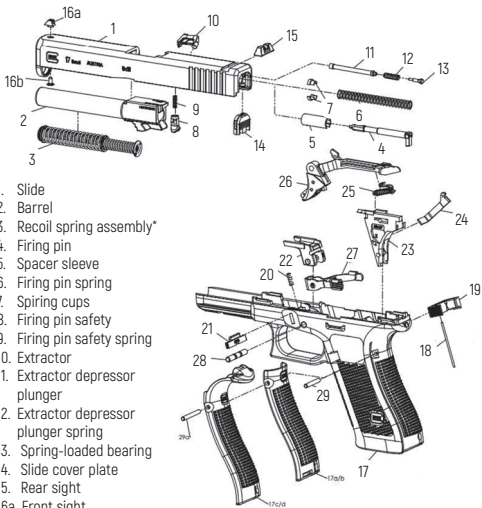
1. Handle firearms as if they were loaded and lethal at all times.
2. Do not point firearms at individuals or objects you do not intend on harming or destroying. Keep firearms pointed in a safe direction away from other persons.
3. Position fingers outside the trigger guard and free from the trigger until the firearm's sights are aligned, the firearm is aimed at a safe direction and you have made the decision to fire.
4. Ensure that your target and the surrounding areas are safe prior to firing.

**CAUTION:** Always wear safety glasses when assembling/disassembling firearms and installing the Reset Trigger System. Before installation, ensure the handgun is safe. First, remove magazines. Then, pull the slide to the rear to inspect the chamber both visually and physically and ensure no ammunition is left in the pistol's chamber.

The Reset Trigger System Kit includes the following components:

- A. Modified Striker Assembly
- B. Modified Trigger Housing Assembly
- C. Striker Rebound Spring (two, one spare included)
- D. Slide stop Lever

**WARNING:** Never use live ammunition with the Reset Trigger System. Live ammo could result in serious injury or death. The system is designed specifically to activate the trigger during dry fire and laser practice only.



1. Slide
2. Barrel
3. Recoil spring assembly\*
4. Firing pin
5. Spacer sleeve
6. Firing pin spring
7. Spring cups
8. Firing pin safety
9. Firing pin safety spring
10. Extractor
11. Extractor depressor plunger
12. Extractor depressor plunger spring
13. Spring-loaded bearing
14. Slide cover plate
15. Rear sight
- 16a. Front sight
- 16b. Front sight screw
17. Frame
18. Magazine catch spring
19. Magazine catch
20. Slide lock spring
21. Slide lock
22. Locking block
23. Trigger mechanism housing with ejector

24. Connector
25. Trigger spring
26. Trigger with trigger bar
27. Ambidextrous slide stop lever
28. Trigger pin
29. Trigger housing pin [short]

## **MODIFY THE SLIDE:**

1. Using your unloaded handgun, field strip the gun. Remove the slide from its frame. (*see #1*)
2. Remove the slide cover plate (*see #14*) and pull the factory striker (*see #4*) from the slide.
3. Next, remove the factory trigger safety plunger (*see #8*) and trigger safety plunger spring (*see #9*). Both items are not necessary when training with the Reset Trigger System.

4. Insert the Modified Striker Assembly into the slide (*see #1*). Remember: Do not replace the trigger safety plunger (*see #8*) or trigger safety plunger spring (*see #9*). The extractor can remain without affecting the functionality of the Reset Trigger.
5. Before reinstalling the slide cover plate (*see #14*), drop one of the Striker Rebound Springs into the spacer sleeve (*see #5*), on top of the Modified Striker Assembly. Ensure the Striker Rebound Spring is positioned upright and not on its side.

**Note:** When installing, the Striker Rebound Spring may catch on the slide cover plate (*see #14*). Reinstall the slide cover plate (*see #14*) carefully and depress the Striker Rebound Spring if necessary.

## **MODIFY THE LOWER:**

6. Remove the pins (*see #28, 29*) from the frame (including the trigger pin and trigger housing pin). From the shooter's perspective, these pins tend to drift out from the left side of the firearm frame to the right side.
7. Remove the locking block (*see #22*). Lift the factory trigger and trigger housing (*see #26, 25, 24, 23*) from the frame.
8. Remove gently the Gen 5 Slide Stop level, and place the provided Slide Stop lever in it's place.

9. Place the Modified Trigger Housing Assembly into the frame. Replace the locking block and the pins as you would with normal reassembly. Application of downward pressure to the trigger housing may be necessary while reinserting the trigger housing pin.

**Note:** After this step, you can test the trigger to see if it resets itself. Simply pull on the trigger and watch it reset back into battery.

10. Finally, like standard installation, assemble the slide into the frame. Cycle the slide once to ensure the pistol is in full battery.

11. Verify functionality. The Reset Trigger System should engage the Modified Striker Assembly when pulling the trigger completely to the rear. Keep in mind, the trigger pull is approximately 2.9kg. The extra pull weight helps strengthen your trigger finger muscles - enabling you to shoot rapidly as well as build stamina during prolonged live fire.

**Note:** A properly installed Reset Trigger System will leave the following parts removed from the Glock: Factory striker assembly, trigger safety plunger, trigger safety plunger spring, factory trigger and trigger housing.

\*\* in some cases, the trigger weight after assembly is heavier than 3.3kg, it is possible to reduce the weight by remove the striker rebound spring from the spacer sleeve.

**For more information  
and purchasing please contact:**

**KNT AB (Sweden)**

**018-4951115**

**[info@kntab.com](mailto:info@kntab.com)**