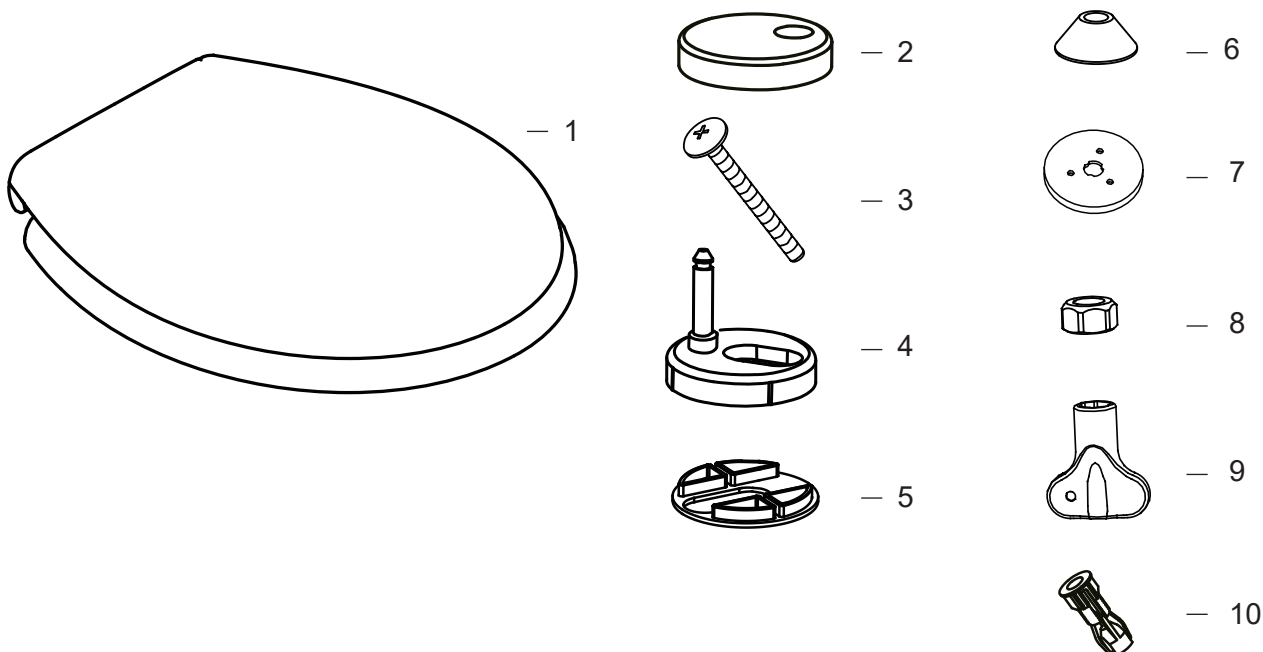


Fitting Instruction: Toilet Seats (ST1)



Inside the box

- | | |
|--------------------------|----------------------------|
| 1 – Toilet seat with lid | 6 – No slip bottom grommet |
| 2 – Cover plate | 7 – Bottom washer |
| 3 – Fixing bolt | 8 – Bolt |
| 4 – Spigot | 9 – Spanner |
| 5 – Spigot washer | 10 – Expanding grommet |

All parts are included inside the box – but some will not be used!

Please Note

The lid is not a solid seat and should not be sat or stood upon.

Do not force the seat or the lid down - as this can damage the 'slow close' mechanism.

Only use hot soapy water and mild detergents to clean the seat, no strong chemicals or abrasives.

The toilet seat is fitted to the toilet pan using either 'top fix' or 'bottom fix' method.

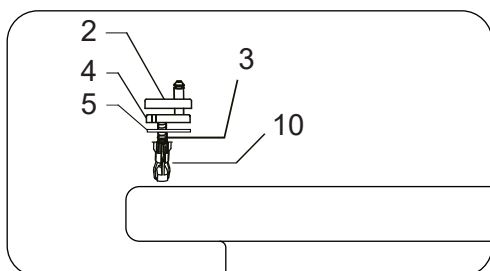


**Scan QR code to link
to a demonstration video.**

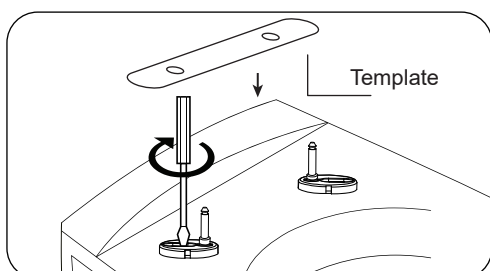
Fitting Instruction: Top & Bottom fix Installation

Top Fix

This is when you cannot access the bolts from underneath the toilet pan. You will not use the no slip bottom grommet (6).



- 1 For top fix installations, please assemble as diagram.



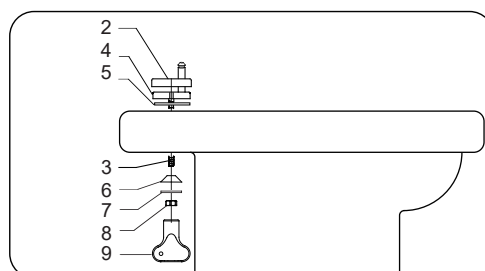
- 2 We have included a Fitting Template to make it easier to install the seat.



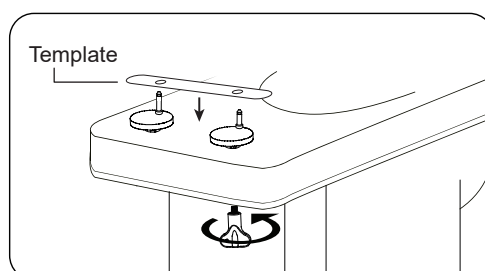
Scan QR code to link to a demonstration video of the template.

Bottom Fix

This is when you have access to screw the nuts up from underneath the toilet pan. You will not use the Expanding Grommets (9).



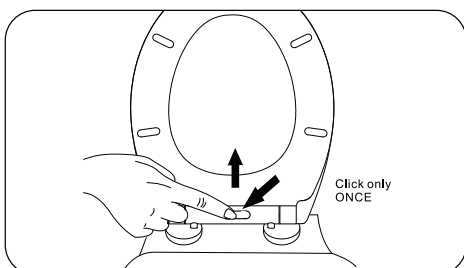
- 1 For bottom installations, please assemble as diagram.



- 2 We have included a Fitting Template to make it easier to install the seat.



Scan QR code to link to a demonstration video of the template.



Toilet seat removal

To remove the seat for cleaning – press the button **ONCE** only.