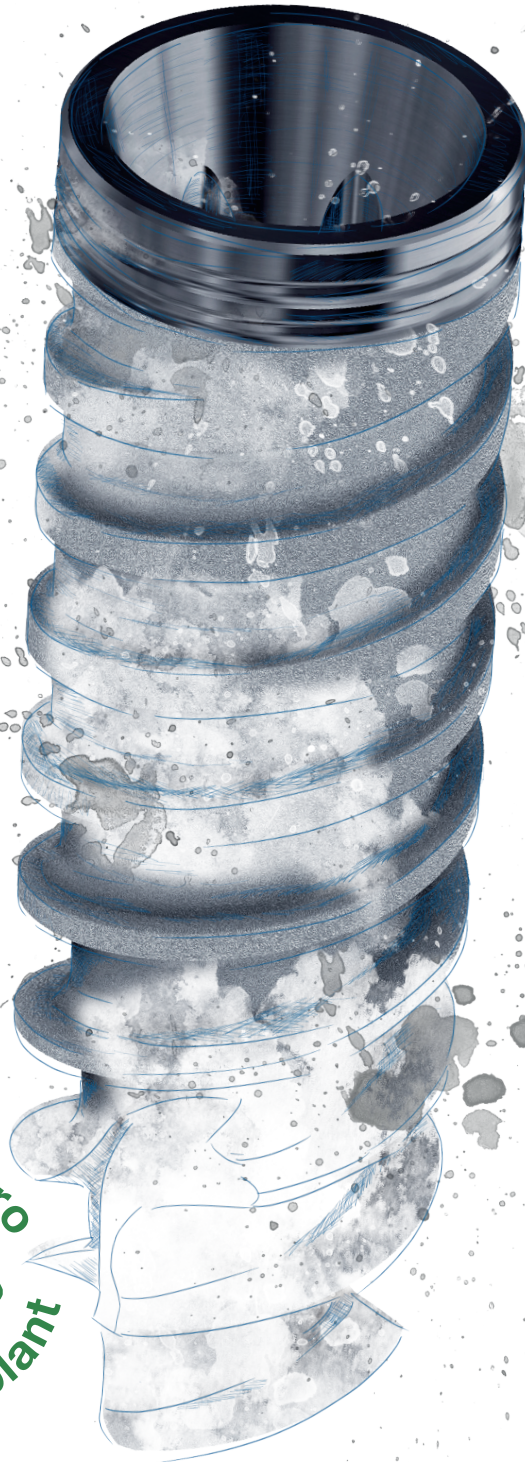




DESS

> DENTAL SMART SOLUTIONS



ACTIVE HEX[®]

IMPLANT



The zero-waste implant

Why?

Packaging waste has a very deep impact on the environment, and the amount of waste generated by industries cannot be ignored. On that front, we felt it was our responsibility to take a stand and show that things can be done differently.

DESS has always been committed to the environmental sustainability why we have created:

The 1st zero-waste implant on the market.

How?

We recycle and re-use 100% of its packaging.

- 100% recycled cardboard box
- Widely recyclable PET blister
- Reusable/recyclable titanium vial



We have come a full circle:

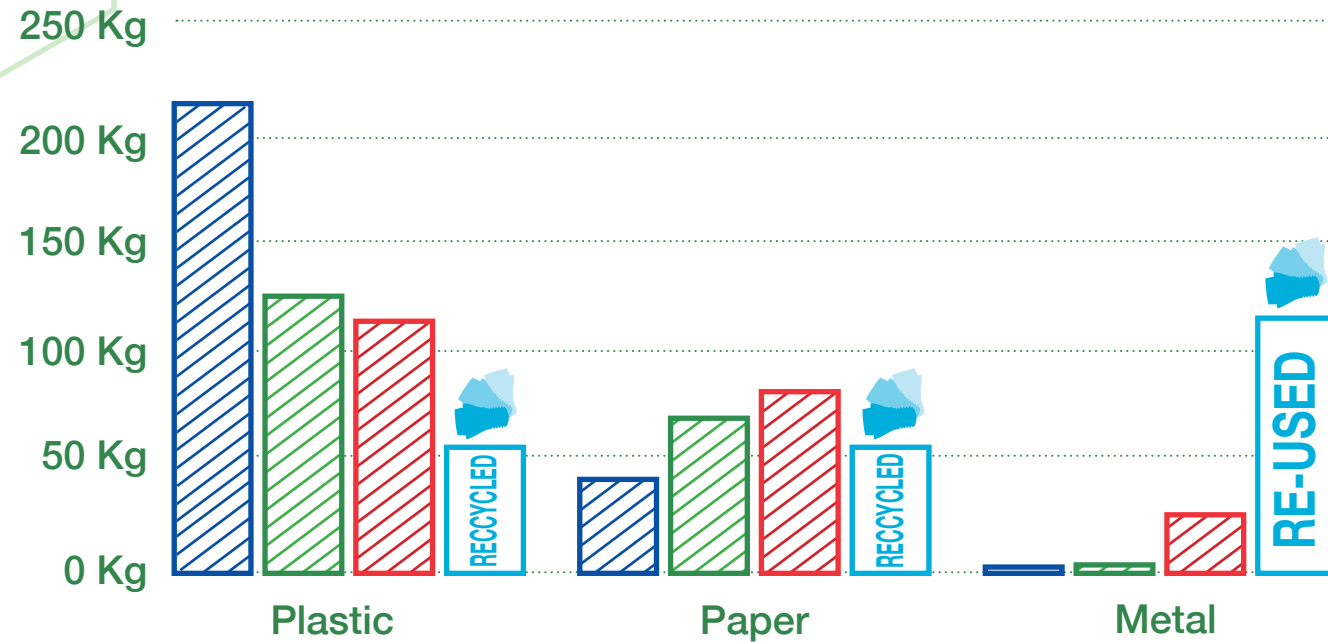
creating a process that ensures full sustainability of the product's life cycle.

We assume the integral collection of the packaging, making sure no waste is generated.



Material used in packaging:

DESS vs. Implant leading brands x 10.000 implants



What?

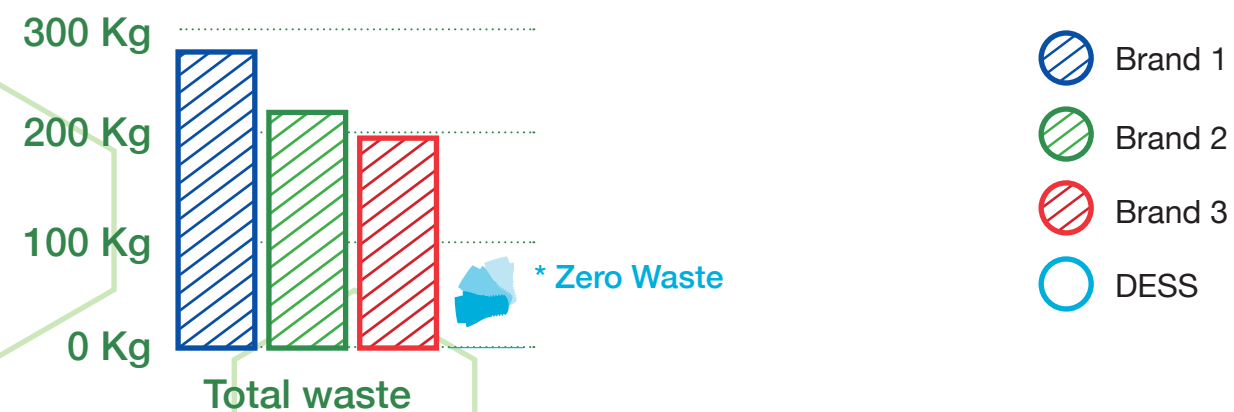
Comparing our packaging with that of the top implant brands, DESS has a much lighter consumption of paper and plastic.

We have reduced the use of paper and plastic in our packaging to the minimum. Instead, we have introduced our ground-breaking **titanium vial**. Why? Because a titanium vial can be sterilised and re-used, creating absolutely ZERO waste.

Moreover, we are the only ones with a waste collection process that assures full recycling, guaranteeing no waste is generated from our packaging.

Packaging waste:

DESS vs. Implant leading brands x 10.000 implants

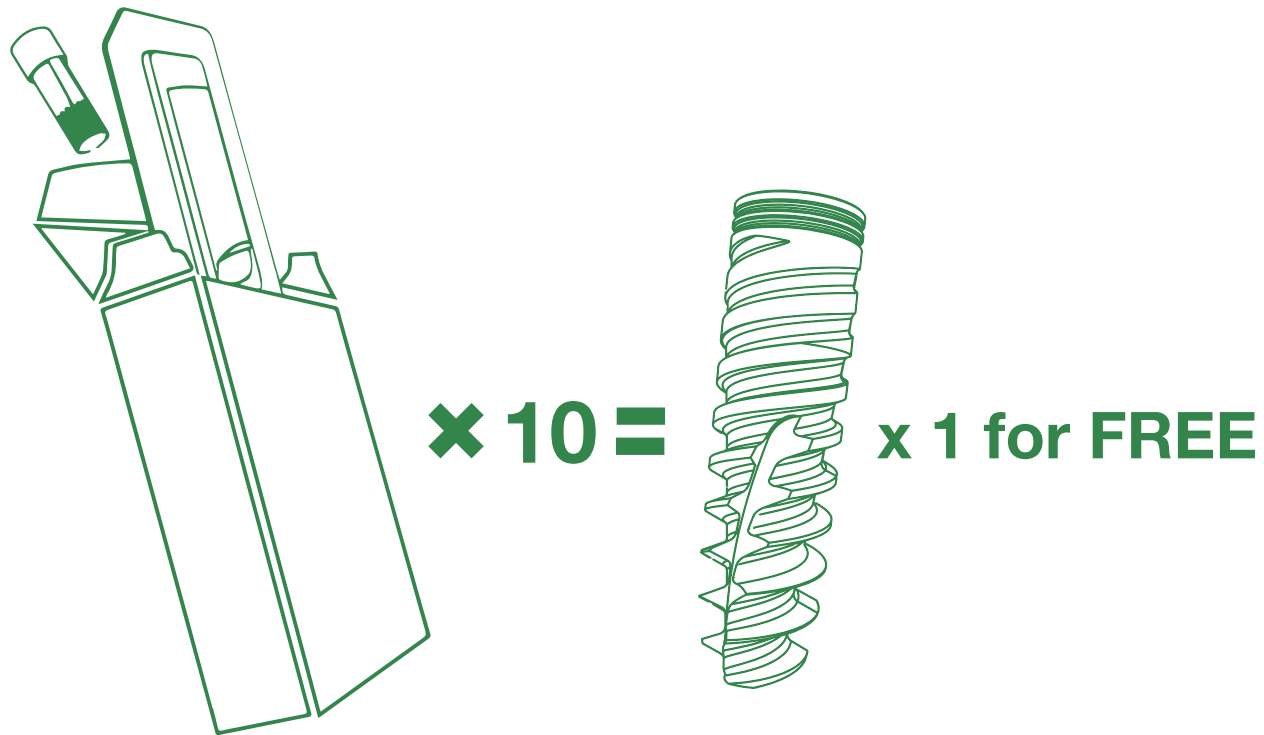


*DESS generates Zero Waste from its packaging.

Our gift to you

As a show of gratitude for helping us create the first sustainable implant on the market:

For every 10 packs you return – you get 1 FREE IMPLANT



With your commitment we have achieved the **first eco-friendly implant on the market.**

Help us recycle/reutilise the packaging and prevent it from damaging our planet.

How to proceed

Really simple! You can contribute to a greener future in just 3 steps!
Each time you use a DESS Implant:

1. Repack the empty vial inside the blister.
2. Place them both inside the empty implant cardboard box.
3. Gather as many units as you can and send them back to your supplier.
Our distributor will provide you with a return box that fits 20/40 packs.

*Our carriers have different **CO₂ emissions neutralization initiatives**, but, in order to **minimise transportation impact**, please, don't send half-empty boxes!*





ACTIVE HEX

- Introduction	9
-ACTIVE HEX in detail	10
- The Science Behind	12
- Fatigue Testing	14
- Cleaning Report	16
- Certifications	17
- The Connection	18
- Product Characteristics	20
- Product Overview	22
- Surgical Kit	24
- Implants & Tools	26
- Drilling Protocols	28
- Implant Driver	30
- Packagin	32
- Warranty	33
- Digital Workflow	34
- Prosthetics	36
- Recommendations	44

Since the first root-form dental implant was fitted back in 1965, we've seen a great evolution in the sector. External or internal connections, cylindrical or tapered shapes, sub or supra crystal applications, different surface treatments, etc.

Over the years companies have found a formula to differentiate and create value around their system; this differentiation has been backed by their corresponding research studies. Thousands of studies about the different shapes, connections and surface treatments have been published, thus helping the industry reach new heights of dental care.

Here at DESS, we started our journey with a different approach. We became experts in connections and created value around the prosthesis with our own solutions. AURUMBase® our angulated screw channel solution at 25° with 360° rotation and a short chimney (which produces the best aesthetic results) or the ELLIPTIBase® (great for narrow interdental spaces) are some of the finest examples of our approach.

Since our inception, we've always seen the implant as an anchor that is required to attach the prosthetic teeth to the jaw. Without down-playing the key role of the implant, we have focused on the part of the process we believed had more value and presented more challenges. Now, more than 40 years after Professor P-I Dr. P Brånemark introduced the first two-stage threaded titanium root-form implant, the industry is focusing on the prosthesis and digitalisation, thus proving the validity of our approach.

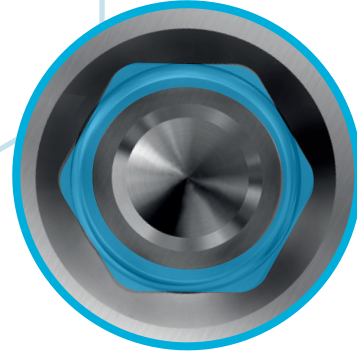
The PureSwitch concept upon which all our products are conceived is based on a seamless transition without compromise, and a great example of the intrinsic philosophy we apply in the development of all our products.

I proudly introduce the DESS Implant range.

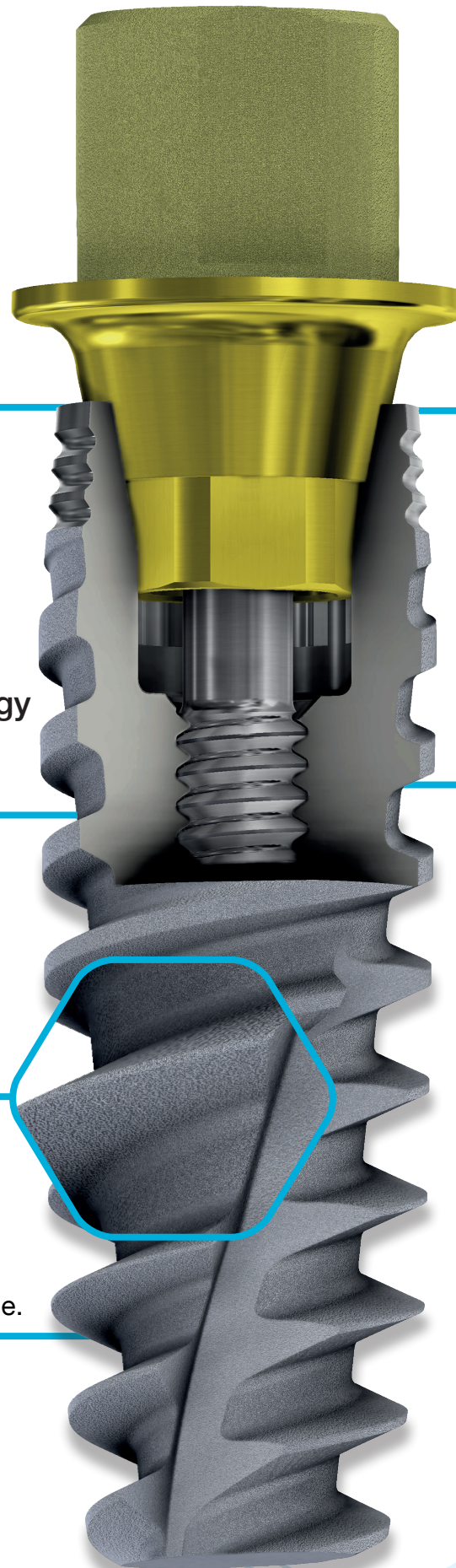
Roger Terrats
C.E.O.



ACTIVE HEX



Tight sealed mechanical conical internal connection with hexagonal interlocking.



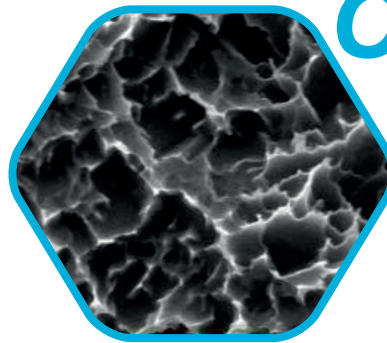
Machined collar to limit bone resorption and periimplantitis, whilst providing space for additional marginal bone.



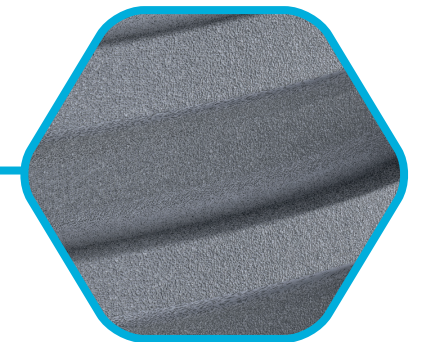
O sseointegration S urface T echnology

Double treatment (acid etch & sandblasting) assures optimal bone growth.

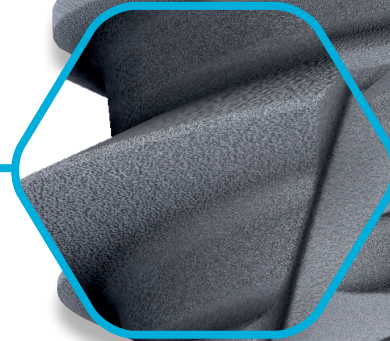
Complies with SLA standards.



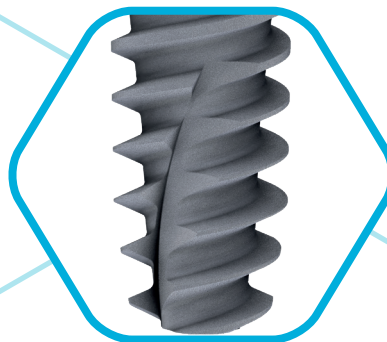
Variable thread thickness¹, faster cutting and penetration in an apical area with thicker upper thread to improve bone compacting features.



Aggressive apical thread and reverse cutting flutes enables the position to be adjusted during placement.



Excellent primary stability, especially in softer bone.



Availability:

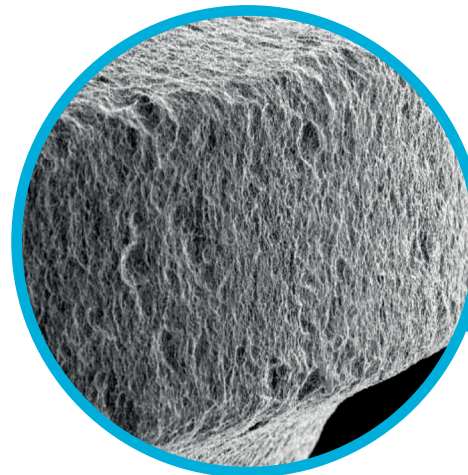
Implant ø		3.0	NP	RP	RP	WP
Length	7.0 mm					
	8.5 mm	-				
	10 mm					
	11.5 mm					
	13 mm					
	15 mm					
	18 mm	-				-

¹ Kolinski ML, Cherry JE, McAllister BS, et al. Evaluation of a variable-thread tapered implant in extraction sites with immediate temporization: A 3-year multi-centre clinical study. J Perio dontol 2014;85(3):386-394.

The Science behind: **OST[®]**

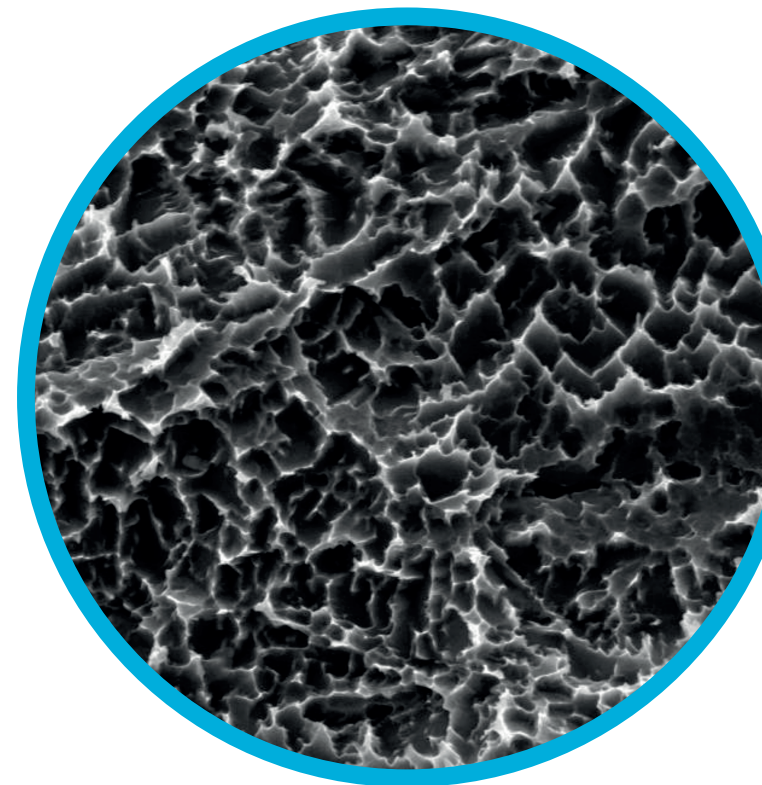
Our **O**sseointegration **S**urface **T**echnology is achieved by using two different processes, which when combined present a double range roughness composed of large “holes” due to sandblasting and microroughness due to acid etching.

- Sandblasting by alumina particles.
- Double acid etching.



x 250

Homogeneous treatment with big holes due to the sandblasting.



x 5000

Microroughness due to acid etching inside the holes.

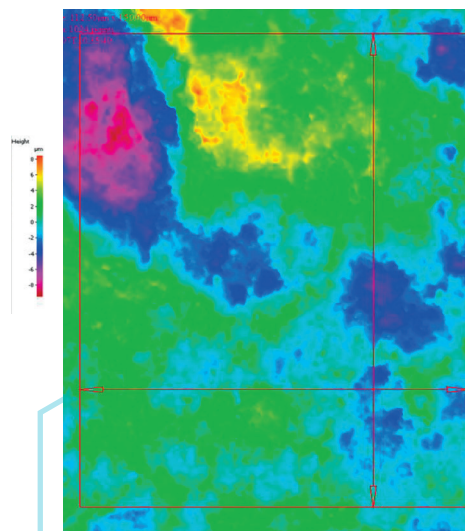
Optimal surface topography for osseointegration.

Surface roughness by Stereo SEM:

The following parameters as defined by ISO25178 are calculated: Sa: average height of selected area; Sdr: developed interfacial area ratio; Sz: maximum height of the selected area. The following acceptance limits apply:

Sa	Sdr	Sz
≥ 1.10 μm	≥ 30%	> 8 μm

Results: the three-dimensional height image obtained by SEM analysis of treated DESS[®] implants are shown below. The analysed 60 x 90 micrometres area is shown by the red rectangle.

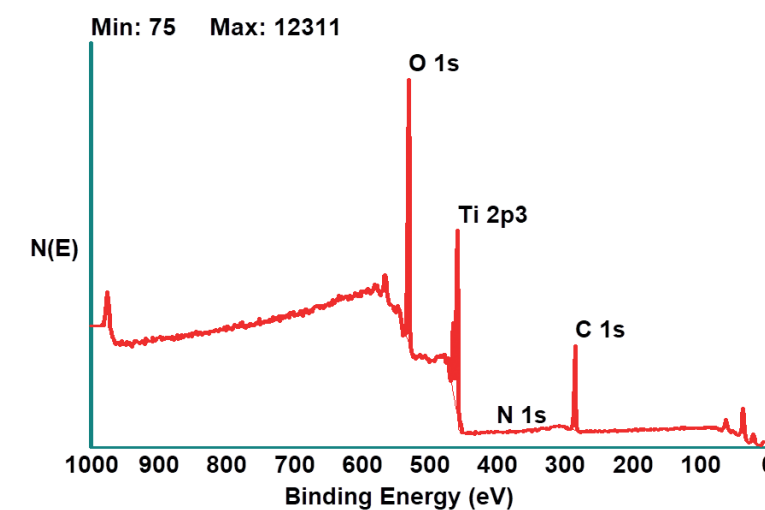


Conclusion:

Quantitative evaluation of surface roughness by Stereo SEM shows that treated DESS implants comply with the defined values for SLA treatment.

Analysis of surface chemistry by XPS:

Manufactured in cold-worked titanium grade 4, the surface composition analysis shows the following results:



	ACTIVE HEX DESS [®]	STANDARD*
O	46.4%	>40%
Ti	19.5%	>17%
N	0.4%	<3%
C	33.7%	<40%

* As defined by QP1_2018

Fatigue Testing:



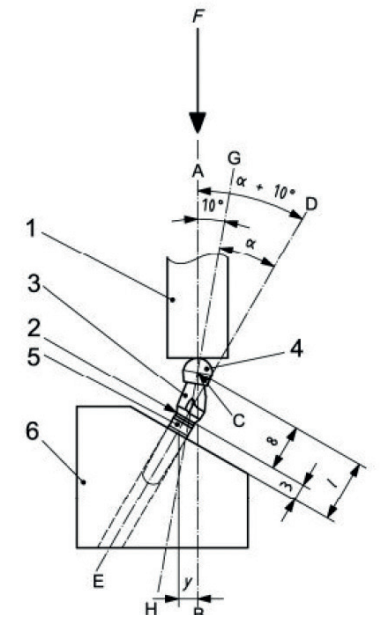
DESS Fatigue Testing Lab.

Fatigue testing is performed by applying cyclic loading to a structure. The test is used to generate fatigue life and crack growth data, identifying critical locations or demonstrate the safety of the structure that may be susceptible to fatigue.

The objective of a fatigue test is to replicate the masticatory forces that occur during the act of chewing. DESS Implant Fatigue testing comprises two different tests, static and dynamic tests.



DESS® Fatigue Testing Machine (Zoom)



According to the ISO standard 14801, dynamic tests were carried out at different load values, starting with 50% of F_c (determined from the average of the values obtained in the static test). The applied load was gradually decreased, and the experiments were repeated until the minimum load does not fail at 5×10^6 cycles in 3 tests.

With more than 30 million cycles, the results obtained show the DESS ACTIVE HEX implant is valid for the intended use as no samples failed at 200N or lower loads.

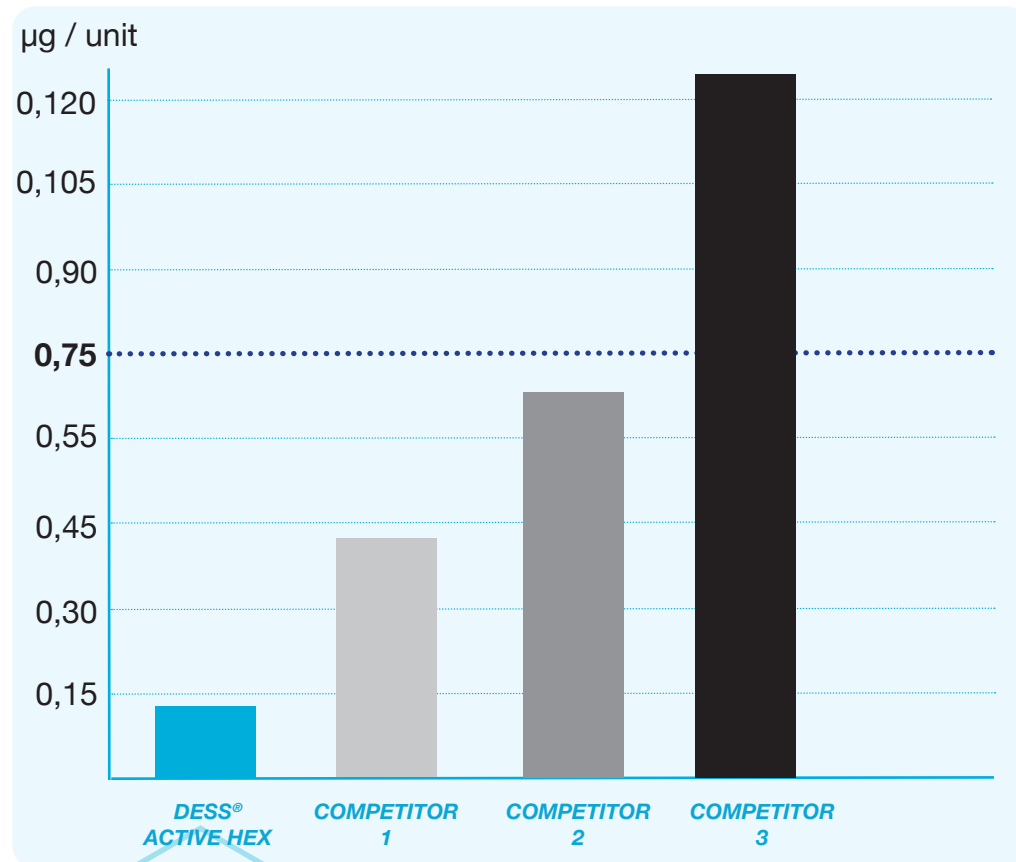
Cleaning Report: TOC

The Total Organic Carbon (TOC) is used to evaluate the cleanliness of medical devices. According to the method: QIMA-0160 with the Technique: Oxidability / Conductimetry. We conducted the test with 20 samples from each implant.

Acceptable value 0.75 µg / unit

Titanium Vial:

A titanium vial guarantees the purity of the materials, we avoid cross contamination generated by the plastic vial. This allow us to achieve an extremely low value on the Total Organic Carbon report.

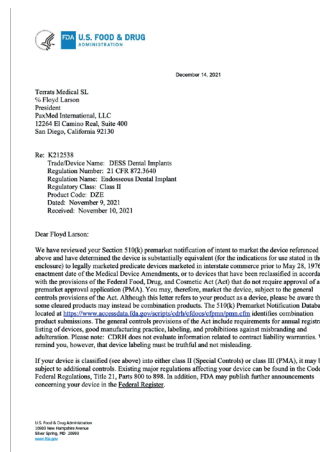


The DESS manufacturing and cleaning process added to the titanium vial ensures an outstanding result way below the acceptance limits.

Certifications:

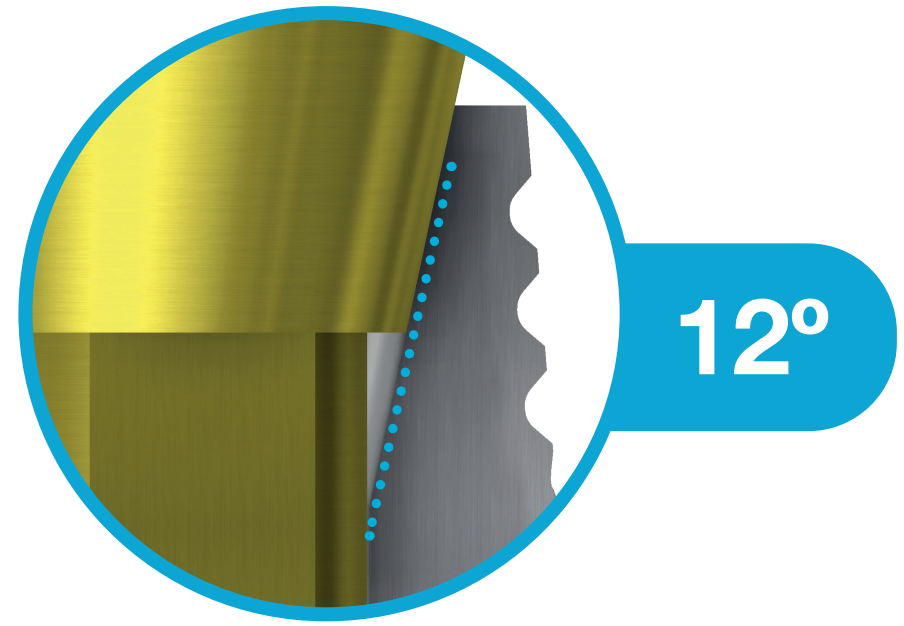
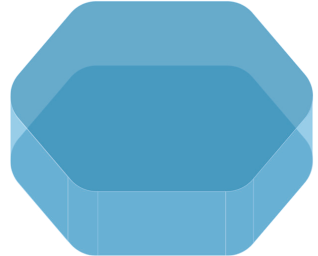
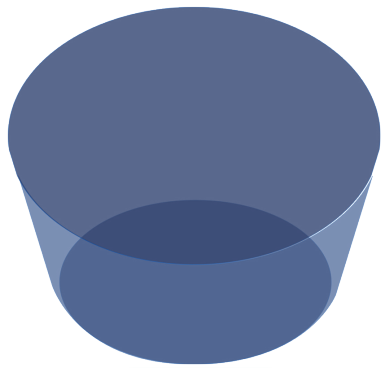
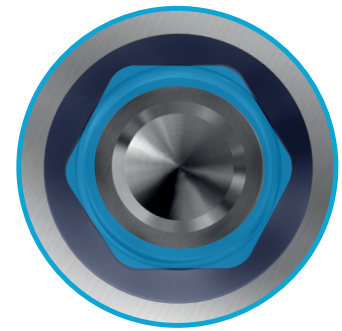
Our implants are manufactured under the rigorous processes outlined in the **ISO 13485:2016** for design, development and manufacturing of dental implants. Added to the standard quality management system established in the **ISO 9001:2015**.

All DESS products have the **CE** marking and the products have been certified under the **510(k) FDA Nr. K212538**. Our company quality management system complies with **MDSAP** requirements.



The Connection:

Dual Function, internal conical connection, at 24° creating the ultimate seal whilst reducing the possibility of micromovements, with hexagonal interlocking (6 positions) for a firmer connection with superior mechanical strength.



DESS implant and prosthetic set.

PRODUCT CHARACTERISTICS

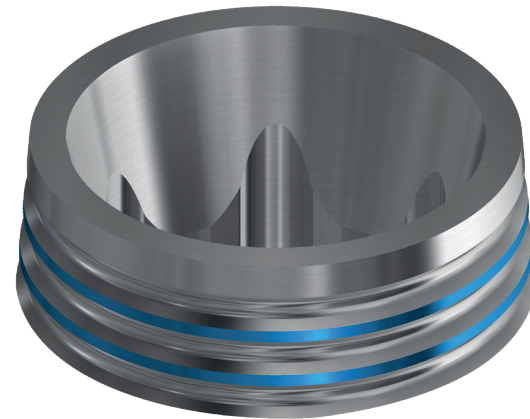
The Neck:

The inverted conical shape of the collar added to the micro rings may reduce early bone loss.

The long term success and predictability of implant supported restorations will depend on maintaining healthy peri-implant hard and soft tissues.

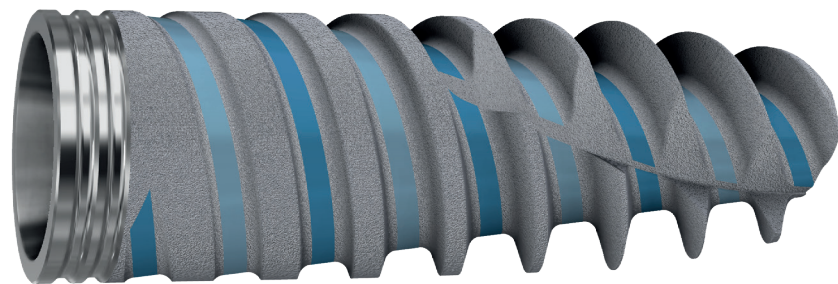
A machined smooth collar, in case of exposed threads, is easy to clean and easy to maintain.

Micro-rings: It has been observed that micro-rings in the implant collar may reduce early bone loss.³



Double-lead thread entry:

A double thread entry makes the insertion considerably faster while reducing the revolutions needed to achieve that insertion.



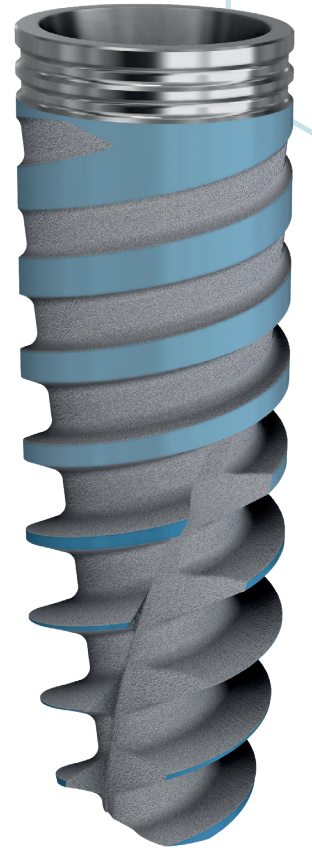
³Hansson, S. The implant neck: Smooth or provided with retention elements. A biomechanical approach. Clin. Oral Implants Res. 1999, 10, 394-405.

⁴Comparison of variable-thread tapered implant designs to a standard tapered implant design after immediate loading. A 3-year multicentre randomised controlled trial Christoph Arnhart 1, Andrej M Kielbassa, Rafael Martinez-de Fuentes, Moshe Goldstein, Jochen Jackowski, Martin Lorenzoni, Carlo Maiorana, Regina Mericske-Stern, Alessandro Pozzi, Eric Rompen, Mariano Sanz, Jörg R Strub.

⁵Karl M, Irastorza-Landa A. Does implant design affect primary stability in extraction sites? Quintessence Int 2017;48(3):219-224.

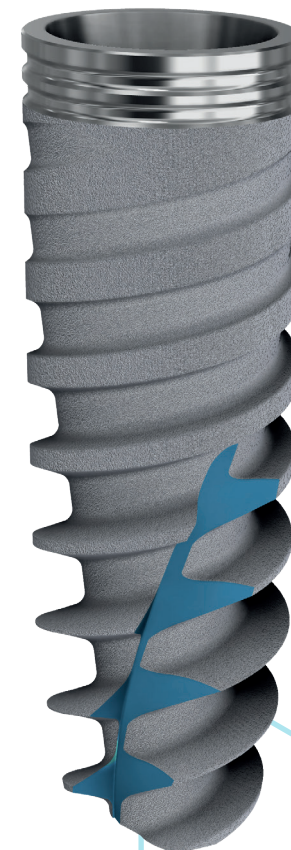
Variable thread thickness:

Apical thinner thread facilitates repositioning while a thicker upper thread improves bone compression. A variable thread improves stability in cases of immediate loading⁴. Gradual bone compression is achieved thanks to ACTIVE HEX expanding body.



Apical Design:

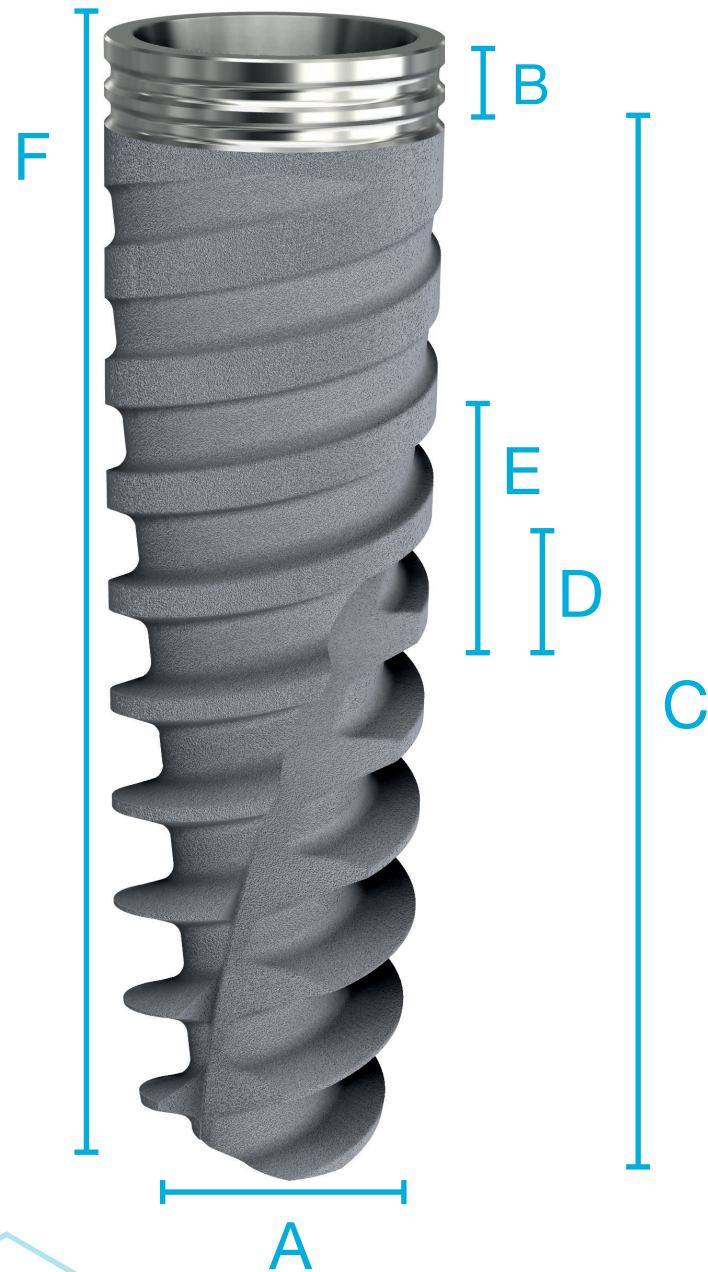
The apical design with twin cutting blades will facilitate the insertion into minimally prepared sites. This results in good primary stability in demanding situations⁵.



Self-tapping cut:

Turning the ACTIVE HEX counterclockwise (1/2 turn) engages the cutting capabilities of these flutes. The reverse cutting flutes design will cut into the bone, thus enabling the widening of the osteotomy.

Product Overview

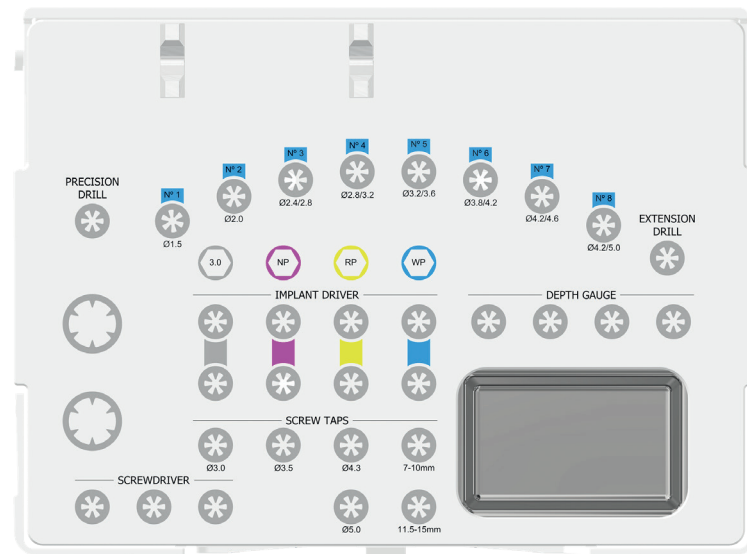


Implant Specs.

Platform		A Tip Diameter	B Collar Height	C Thread Height	D Thread Spacing	E Thread Pitch	F Total Length
3.0	3.0 x 10 mm	1.95	0.77	8.7	1.0	2.0	9.5
	3.0 x 11.5 mm	1.95	0.77	10.2	1.0	2.0	11.0
	3.0 x 13 mm	1.95	0.77	11.7	1.0	2.0	12.5
	3.0 x 15 mm	1.95	0.77	13.7	1.0	2.0	14.5
NP 3.5	3.5 x 8.5 mm	2.6	0,92	7.0	1.2	2.4	8.0
	3.5 x 10 mm	2.6	0,92	8.5	1.2	2.4	9.5
	3.5 x 11.5 mm	2.6	0,92	10.0	1.2	2.4	11.0
	3.5 x 13mm	2.6	0,92	11.5	1.2	2.4	12.5
	3.5 x 15 mm	2.6	0,92	13.5	1.2	2.4	14.5
RP 4.3	3.5 x 18 mm	2.6	0,92	16.5	1.2	2.4	17.5
	4.3 x 8.5 mm	3.2	1.36	7.0	1.2	2.4	8.0
	4.3 x 10 mm	3.2	1.36	8.5	1.2	2.4	9.5
	4.3 x 11.5 mm	3.2	1.36	10.0	1.2	2.4	11.0
	4.3 x 13mm	3.2	1.36	11.5	1.2	2.4	12.5
	4.3 x 15 mm	3.2	1.36	13.5	1.2	2.4	14.5
RP 5.0	4.3 x 18 mm	3.2	1.36	16.5	1.2	2.4	17.5
	5.0 x 8.5 mm	3.6	1.36	7.0	1.2	2.4	8.0
	5.0 x 10 mm	3.6	1.36	8.5	1.2	2.4	9.5
	5.0 x 11.5 mm	3.6	1.36	10.0	1.2	2.4	11.0
	5.0 x 13mm	3.6	1.36	11.5	1.2	2.4	12.5
WP 5.5	5.0 x 15 mm	3.6	1.36	13.5	1.2	2.4	14.5
	5.0 x 18 mm	3.6	1.36	16.5	1.2	2.4	17.5
	5.5 x 7 mm	4.0	1.36	5.5	1.2	2.4	6.5
	5.5 x 8.5 mm	4.0	1.36	7.0	1.2	2.4	8.0
	5.5 x 10 mm	4.0	1.36	8.5	1.2	2.4	9.5
	5.5 x 11.5 mm	4.0	1.36	10.0	1.2	2.4	11.0
	5.5 x 13mm	4.0	1.36	11.5	1.2	2.4	12.5
	5.5 x 15 mm	4.0	1.36	13.5	1.2	2.4	14.5

SURGICAL KIT

The DESS® Active Hex surgical kit is designed to be simple and easy to use. It can be customised to the different protocols arranging the drills as per the case needs. Drill bits are available in 3 different lengths: 28mm, 33mm and 36mm.



Choose from the different available drills and mount your customised kit.

If you already have a kit for this type of connection, there is no need to acquire the DESS surgical kit, our implants are 100% compatible with the kits of the brand of reference⁶.

With flush silicone inserts that are easily wiped clean and manufactured in autoclavable material, the DESS surgical kit is easy to keep clean and sterilised.

⁶Please contact your supplier to find out more.

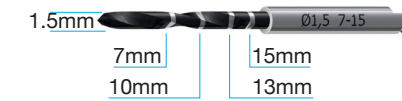
28mm

33mm

36mm

N°1

TDRACT2150150 ø1.5mm



N°2

TDRACT2200100 ø2.0mm



TDRACT2200150 ø2.0mm

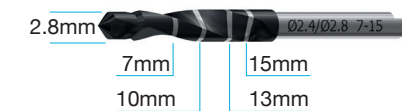


TDRACT2200180 ø2.0mm



N°3

TDRACT3280150 ø2.4/2.8mm



TDRACT3280180 ø2.4/2.8mm

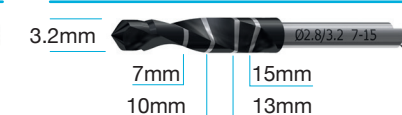


N°4

TDRACT3320100 ø2.8/3.2mm



TDRACT3320150 ø2.8/3.2mm



TDRACT3320180 ø2.8/3.2mm



N°5

TDRACT3360150 ø3.2/3.6mm



TDRACT3360180 ø3.2/3.6mm



N°6

TDRACT3420150 ø3.8/4.2mm



TDRACT3420180 ø3.8/4.2mm

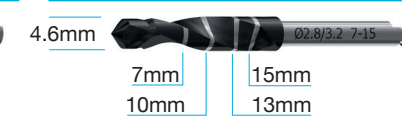


N°7

TDRACT3460100 ø4.2/4.6mm



TDRACT3460150 ø4.2/4.6mm



TDRACT3460180 ø4.2/4.6mm



N°8

TDRACT3500100 ø4.2/5.0mm



TDRACT3500150 ø4.2/5.0mm



IMPLANTS & TOOLS



IMPLANTS	3.0	NP	RP	RP	WP
	3.0	3.5	4.3	5.0	5.5
7mm					INA0550070
8.5mm		INA0350085	INA0430085	INA0500085	INA0550085
10mm	INA0300100	INA0350100	INA0430100	INA0500100	INA0550100
11.5mm	INA0300115	INA0350115	INA0430115	INA0500115	INA0550115
13mm	INA0300130	INA0350130	INA0430130	INA0500130	INA0550130
15mm	INA0300150	INA0350150	INA0430150	INA0500150	INA0550150
18mm		INA0350180	INA0430180	INA0500180	

PRECISION DRILL



TDRACT1

DRILLS



	28mm	33mm	36mm
ø 1.5mm		TDRACT2150150	
ø 2mm	TDRACT2200100	TDRACT2200150	TDRACT2200180
ø 2.4/2.8mm		TDRACT3280150	TDRACT3280180
ø 2.8/3.2mm	TDRACT3320100	TDRACT3320150	TDRACT3320180
ø 3.2/3.6mm		TDRACT3360150	TDRACT3360180
ø 3.8/4.2mm		TDRACT3420150	TDRACT3420180
ø 4.2/4.6mm	TDRACT3460100	TDRACT3460150	TDRACT3460180
ø 4.6/5.0mm	TDRACT3500100	TDRACT3500150	

SCREW TAPS	3.0	NP	RP	RP	WP
	3.0	3.5	4.3	5.0	5.5



TTPACT430 *10-15mm
 TTPACT435 *8.5-18mm
 TTPACT443 *8.5-18mm
 TTPACT450 *8.5-18mm

TTPACT45510 *7-10mm

TTPACT45515 *11.5-15mm

*Implant length

IMPLANT DRIVERS	3.0	NP	RP	RP	WP
	3.0	3.5	4.3	5.0	5.5



28mm

TTRACT300280 TTRACTNP280 TTRACTRP280 TTRACTRP280 TTRACTWP280

37mm

TTRACT300370 TTRACTNP370 TTRACTRP370 TTRACTRP370 TTRACTWP370

PARALLELIZERS



TPINACT

TORQUE WRENCH TOOL



DTNBTW

SPECIAL TOOLS



DTNBCA



DTNBTR

SCREW DRIVERS



24mm

DT24U



30mm

DT30U



35mm

DT35U

COVER SCREW



20.468/2 20.439/2 20.440/2 20.440/2 20.469/2

Drilling Protocols*



Drills are made of stainless steel with a diamond-like carbon coating (DLC). They are used with external irrigation and are available in three lengths:

- 28mm
- 33mm
- 36mm

Please check the Instructions for use when determining the drilling protocol, according to bone quality.

Use an in-and-out motion and drill the bone for 1-2 seconds.

Move the drill up without stopping the handpiece motor. This will allow the irrigation to flush away debris.

Proceed until the desired depth reference line is reached.


Screw taps are available for dense bone situations to avoid excessive torque during implant insertion.






Max 70 Ncm for NP, RP and WP and 45 Ncm for 3.0 implants.












Don't exceed the maximum speed of 2000 rpm.














*Contact your local supplier for more information.

















 Recommended steps for the surgical process.


















 For widening of cortex only, not drilling the full depth.

Implant Diameter	Type of Bone	Drill Diameter		
		ø1.5	ø2.0	ø2.4/ø2.8
3.0	Very Hard Type I	-		
	Hard Type II	-		-
	Soft Type III	-		-
	Very Soft Type IV		-	-
	RPM Max	800	600	600

Implant Diameter	Type of Bone	Drill Diameter		
		ø2.0	ø2.4/ø2.8	ø2.8/ø3.2
3.5	Very Hard Type I			
	Hard Type II			
	Soft Type III			
	Very Soft Type IV			-
	RPM Max	800	600	600

Implant Diameter	Type of Bone	Drill Diameter				
		ø2.0	ø2.4/ø2.8	ø2.8/ø3.2	ø3.2/ø3.6	ø3.8/ø4.2
4.3	Very Hard Type I			-		
	Hard Type II			-		-
	Soft Type III			-		-
	Very Soft Type IV				-	-
	RPM Max	800	600	600	500	400

Implant Diameter	Type of Bone	Drill Diameter				
		ø2.0	ø2.4/ø2.8	ø2.8/ø3.2	ø3.2/ø3.6	ø3.8/ø4.2
5.0	Very Hard Type I					
	Hard Type II					-
	Soft Type III					-
	Very Soft Type IV				-	-
	RPM Max	800	600	600	500	400

Implant Diameter	Type of Bone	Drill Diameter				
		ø2.0	ø2.4/ø2.8	ø3.2/ø3.6	ø3.8/ø4.2	ø4.2/ø4.6
5.5	Very Hard Type I				-	
	Hard Type II					
	Soft Type III					
	Very Soft Type IV				-	-
	RPM Max	800	600	600	500	400

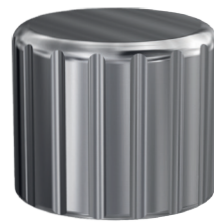
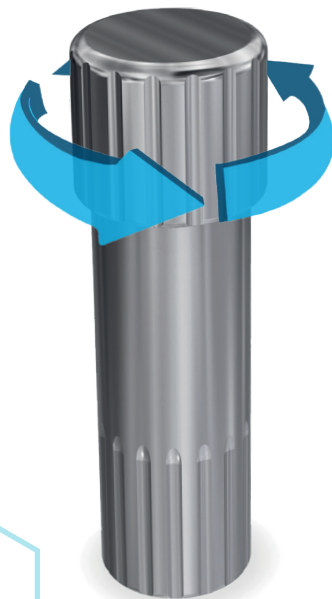
Note: In soft and very soft bone situations with a dense cortex, it is recommended to use the profile drill to prepare the cortical aspect of the osteotomy.

IMPLANT DRIVER

The DESS Active Hex transporter allows being used manually, with a torque wrench, or a contra angle.



The \varnothing 8mm torque wrench adapter can be used to securely position the implant manually then use the recommended torque to place the implant.



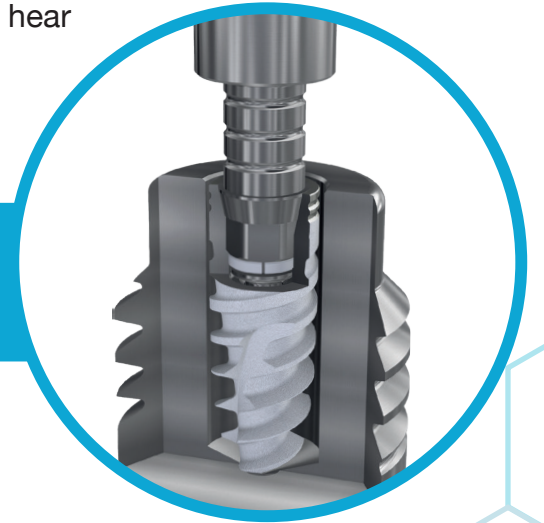
CONTRA ANGLE



TORQUE WRENCH

The transporter should be inserted at an angle turning it slightly until the correct position is found. Apply slight pressure until you hear a "click".

"SNAP"



Packaging:



See instructions for use



Do not reuse



Do not resterilize



MR conditional



Caution



Keep away from sunlight



UDI



Lot



Reference



Eco conscious:

No paper instructions, download Instructions for use scanning the QR code in the box or from www.dessdental.com



Do not use if the container is damaged



Expiration date



Sterilised by irradiation



Single sterile barrier system with protective packaging outside



Manufacturer



MDD CE certification & notified body

Lifetime Warranty

DESS Dental provides patient safety and customer confidence

The DESS warranty is probably the most comprehensive on the market. With a Lifetime warranty on all DESS implants. Our Lifetime warranty also applies to all DESS components and 3rd party implants.

What is the DESS warranty?

- Lifetime replacement warranty for all our implants.
- Lifetime replacement warranty for all components including the abutment screw manufactured and supplied by Terrats Medical SL.

What is the 3rd party implant warranty?

- Guarantee DESS implant systems and third-party implants used in combination with our components excluding immediate restorations. In case of implant failure, we guarantee reimbursement of prosthetic components and the implant.
- The third-party warranty will apply if the manufacturer of the implant used limits or refuses its guarantee on the implant because it was used in combination with a DESS abutment.

Important: We don't provide a third-party implant warranty when the warranty period of the original implant has been exceeded.

To apply for the warranty you have to comply with the recommendations and instructions of our product IFUs.



How do we ensure that our products are Lifetime?

•Rigorous quality controls under the most exhaustive certifications:



- 100% visual check of all our products.
- Exhaustive fatigue testing.

If you want to know more about what is not covered by the lifetime warranty and the claim procedure, please check our website:



Digital Workflow:

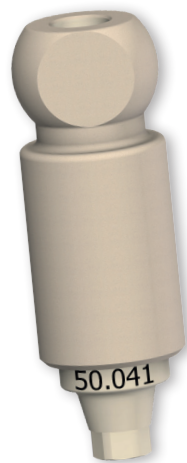
DESS digital integration offers CAD libraries for EXOCAD, 3Shape and Dental Wings including Exoplan and 3Shape implant studio.
Download the libraries for free at (QR de l'enllaç de les llibreries a la web)

Digital Analogue:

Our digital analogue includes a Hex 1.27 screw to attach to the model. Different screws are available separately in packs of 5 (Unigrip®, Torx®, etc.)

Our digital analogues come in two different finishes:

- Anodized, made of Titanium Grade V ELI and colour coded
- Non-anodized, made of Stainless steel.

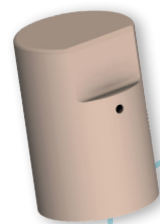


Desktop Scan abutment:

Developed with EXOCAD and made in Tekapeek, the DESS Ball Desktop scan abutment was designed to achieve a precise image range of optical scanners.

Intraoral Scan abutment:

Manufactured in Titanium Grade V ELI with a ZrN coating, DESS intraoral scan abutment allows for Rx control. The lack of a screw hole produces a better and more precise image.



Scan abutment on Ti-base:

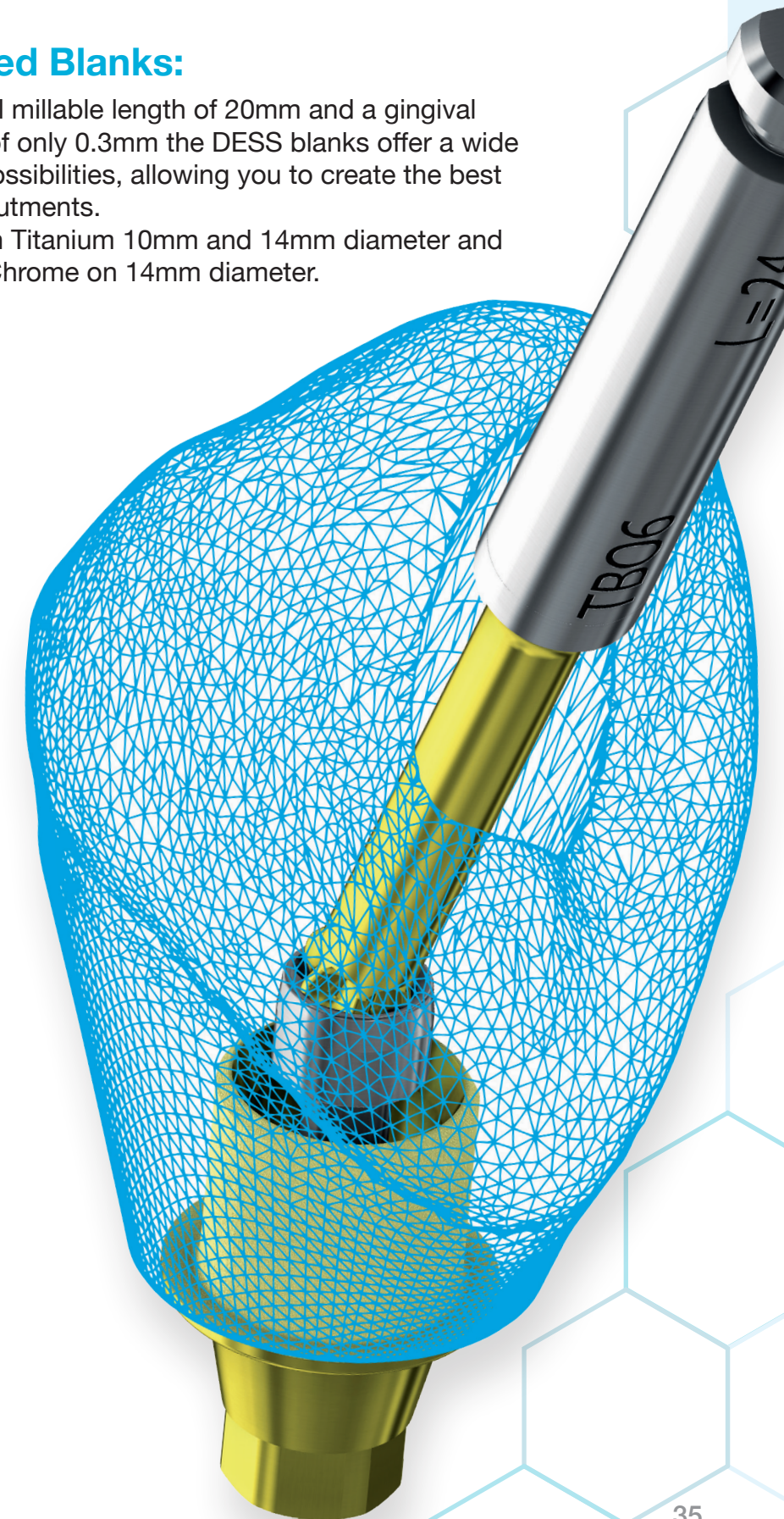
Available free to download and 3D print or to purchase in packs of 5 the scan abutments on Ti-base offer great flexibility.



Premilled Blanks:

With a total millable length of 20mm and a gingival transition of only 0.3mm the DESS blanks offer a wide range of possibilities, allowing you to create the best custom abutments.

Available in Titanium 10mm and 14mm diameter and in Cobalt Chrome on 14mm diameter.



PROSTHETICS



ACTIVE HEX

compatible with
NobelActive® / Replace® CC

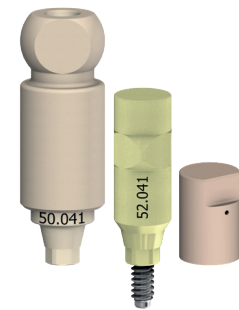
-  non-engaging
-  engaging







HEALING ABUTMENT	3.0	NP	RP	WP
	3.0	3.5	4.3/5.0	5.5
GH 3,0mm ^A	20.068/3	20.039/3	20.040/3	20.069/3
GH 3,0mm ^B		20.047/3	20.048/3	20.070/3
GH 4,0mm ^A	20.068/4	20.039/4	20.040/4	20.069/4
GH 4,0mm ^B		20.047/4	20.048/4	20.070/4
GH 5,0mm ^A	20.068/5	20.039/5	20.040/5	20.069/5
GH 5,0mm ^B		20.047/5	20.048/5	20.070/5

^A for single crown restoration ^B for bridges and structures restoration

SCAN ABUTMENTS



	50.068	50.041	50.042	50.069
	52.068	52.041	52.042	52.069
	53.100-P10	53.100-P10	53.100-P10	53.100-P10
	53.200-P10	53.200-P10	53.200-P10	53.200-P10


TRANSFER

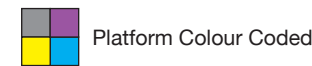



17.068	17.044	17.045	17.069
--------	--------	--------	--------

Transfers include two screws (for open and closed trays).

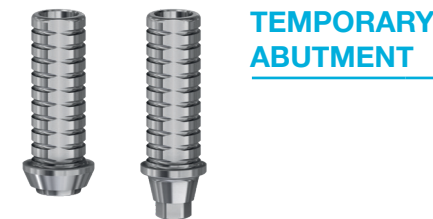




DIGITAL ANALOGUE	3.0	NP	RP	WP
	3.0	3.5	4.3/5.0	5.5
	14.068/D	14.041/D	14.042/D	14.069/D

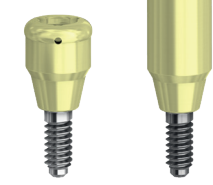




ANALOGUE	3.0	NP	RP	WP
	3.0	3.5	4.3/5.0	5.5
	14.068	14.041	14.042	14.069
10 Packs.		14.041-P10	14.042-P10	14.069-P10

Platform Colour Coded















TEMPORARY ABUTMENT	3.0	NP	RP	WP
			24.041	24.042
		25.041	25.042	

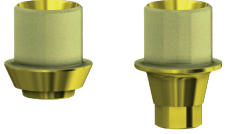


DESSLoc®	3.0	NP	RP	WP
		GH 1,0mm	88.039/1	88.040/1
	GH 2,0mm	88.039/2	88.040/2	
	GH 3,0mm	88.039/3	88.040/3	
	GH 4,0mm	88.039/4	88.040/4	

MULTI-UNIT ABUTMENTS			3.0	NP	RP	WP
			3.0	3.5	4.3/5.0	5.5
	GH 1,5mm	0°		40.007/1	40.008/1	
	GH 2,5mm	0°		40.007/2	40.008/2	
	GH 3,5mm	0°		40.007/3	40.008/3	
	GH 4,5mm	0°			40.008/4	
	GH 2,5mm	17°		41.707/2	41.708/2	
	GH 3,5mm	17°		41.707/3	41.708/3	
	GH 3,5mm	30°		43.007/3	43.008/3	
	GH 4,5mm	30°		43.007/4	43.008/4	



4.8
MULTI-UNIT PLATFORM





TI-BASE			3.0	NP	RP	WP
	GH 1,2mm			15.041	15.042	
	GH 1,5mm		15.068			15.069
	GH 2,0mm			15.041/2	15.042/2	
	GH 3,0mm			15.341	15.342	
	GH 1,2mm			16.041	16.042	
	GH 1,5mm		16.068			16.069
	GH 2,0mm			16.041/2	16.042/2	
	GH 3,0mm			16.341	16.342	

TI-BASE CASTABLES						
5 Packs.		32.001-P5	32.001-P5	32.001-P5	32.001-P5	
5 Packs.		33.001-P5	33.001-P5	33.001-P5	33.001-P5	


AURUMBase®			3.0	NP	RP	WP
			3.0	3.5	4.3/5.0	5.5
				36.041	36.042	
				37.041	37.042	

PLASTIC SLEEVES FOR AURUMBase®						
5 Packs.		0°		33.100-P5	33.100-P5	
5 Packs.		10°		33.101-P5	33.101-P5	
5 Packs.		20°		33.102-P5	33.102-P5	

ELLIPTIBase®			3.0	NP	RP	WP
			A corner			
B flat				57.068		

C-Base®			3.0	NP	RP	WP
			GH 0,8mm			
GH 3,0mm				58.041/3	58.042/3	
GH 0,8mm				59.041	59.042	
GH 3,0mm				59.041/3	59.042/3	

Includes screw, same as standard screw. *Libraries available for EXOCAD & 3Shape.*

Torx® Screw AURUMBase® & ELLIPTIBase®						
	(replacement screw)		19.468	19.441	19.442	
	Recommended torque		35 Ncm	35 Ncm	35 Ncm	

Torx® BALL SCREWDRIVER				
	20mm	24mm	30mm	35mm
	DT20TB06	DT24TB06	DT30TB06	DT35TB06



ABUTMENTS

	3.0	NP	RP	WP
	3.0	3.5	4.3/5.0	5.5
0°		13.041	13.042	
15°		22.041	22.042	
25°			23.042	



SCREW UG

	3.0	NP	RP	WP
	19.068	19.027	19.030	19.030
10 Packs.		19.027-P10	19.030-P10	19.030-P10
DLC	19.268	19.227	19.230	19.230
TIN	19.668	19.627	19.630	19.630
<i>Recommended torque</i>	<i>15 Ncm</i>	<i>35 Ncm</i>	<i>35 Ncm</i>	<i>35 Ncm</i>



PRE-MILLED BLANK

	3.0	NP	RP	WP
Ø 10mm Ti	61.068	61.041	61.042	61.069
Ø 14mm Ti		62.041	62.042	62.069
Ø 14mm CoCr	71.068	71.041	71.042	71.069



CoCr BASE

	3.0	NP	RP	WP
○		30.041	30.042	
⬡		31.041	31.042	



PURE SWITCH by DESS®

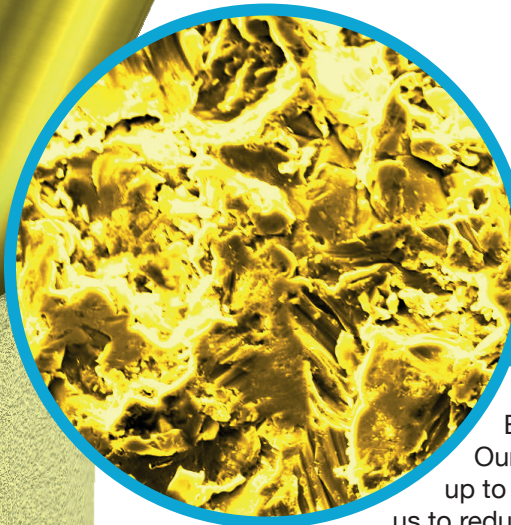
“simple switch, perfect connection”

The Pure Switch concept is the philosophy upon which our products are conceived.

The best example of this are our screws, which have been manufactured using the same dimensions and characteristics as the implant branded screws.

As the key component of every ensemble, DESS® screws have a perfect fit and can be interchanged with the branded version without compromise.





SelectGrip®

Enhanced surface technology. Our patented surface treatment with up to 5x improved retention allows us to reduce the shaft height to achieve better aesthetic results.



Ti-base:

Up to 3 different gingival heights.



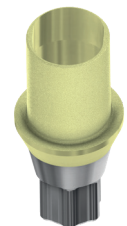
C-Base®:

Engaging and non-engaging, 3 different gingival heights.



AURUMBase®:

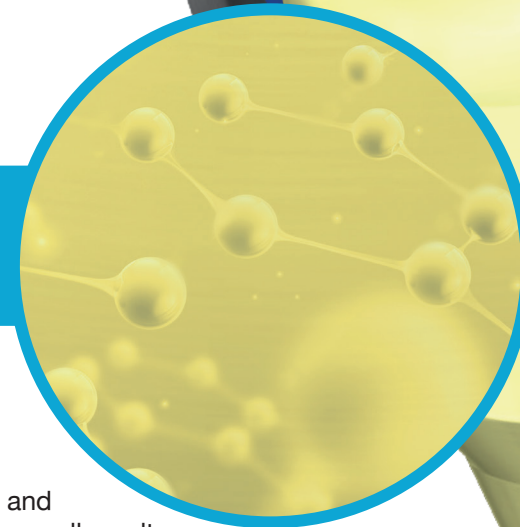
25° angle channel and 360° rotation, reduced shaft for better aesthetic results.



ELLIPTIBase®:

For reduced interdental spaces; 20° angle channel, same cementation area as AURUMBase®. ZrN finish.

ZrN

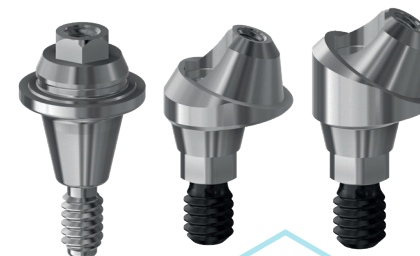


ZrN surface coating offers better resistance and 6x stronger than Titanium Oxide: more corrosion resistant, wear resistant, less plaque adhesion and easier to clean, thus improving overall results and reducing inflammation.



DESSLoc®:

Superior resistance, better results. With a ZrN surface treatment, DESSLoc® is the best solution for removable prosthesis.



Multi-unit:

With up to 5 gingival heights; DESS has the most comprehensive range of Multi-units in the market. Available in 0°, 17° 30°. Angulated Multi-units include DLC screws.

Recommendations:

The following charts contain recommendations only. Clinical conditions and the assessment of the patient by the doctor should always be the main criteria for choosing the size of an implant.

Upper Right Quadrant	URQ	1	UR
Upper Right 3rd Molar	1	8	18
Upper Right 2nd Molar	2	7	17
Upper Right 1st Molar	3	6	16
Upper Right 2nd Pre-Molar	4	5	15
Upper Right 1st Pre-Molar	5	4	14
Upper Right Canine	6	3	13
Upper Right Lateral Incisor	7	2	12
Upper Right Central Incisor	8	1	11

Lower Right Quadrant	LRQ	4	LR
Lower Right Central Incisor	25	1	41
Lower Right Lateral Incisor	26	2	42
Lower Right Canine	27	3	43
Lower Right 1st Pre-Molar	28	4	44
Lower Right 2nd Pre-Molar	29	5	45
Lower Right 1st Molar	30	6	46
Lower Right 2nd Molar	31	7	47
Lower Right 3rd Molar	32	8	48

Upper Left Quadrant	ULQ	2	UL
Upper Right Central Incisor	9	1	21
Upper Right Lateral Incisor	10	2	22
Upper Right Canine	11	3	23
Upper Right 1st Pre-Molar	12	4	24
Upper Right 2nd Pre-Molar	13	5	25
Upper Right 1st Molar	14	6	26
Upper Right 2nd Molar	15	7	27
Upper Right 3rd Molar	16	8	28

Lower Left Quadrant	LLQ	3	LL
Lower Left 3rd Molar	17	8	38
Lower Left 2nd Molar	18	7	37
Lower Left 1st Molar	19	6	36
Lower Left 2nd Pre-Molar	20	5	35
Lower Left 1st Pre-Molar	21	4	34
Lower Left Canine	22	3	33
Lower Left Lateral Incisor	23	2	32
Lower Left Central Incisor	24	1	31



Important:

The 3.0 and 3.5 diameter implants are indicated for use in reduced interdental spaces where there is insufficient alveolar bone for a larger diameter implant. The use of 3.0 and 3.5 diameter implants in posterior rehabilitation is not recommended. Larger diameter implants are indicated for both upper and lower jaw rehabilitations for functional and aesthetic rehabilitations in partially or fully edentulous patients.



www.dessdental.com