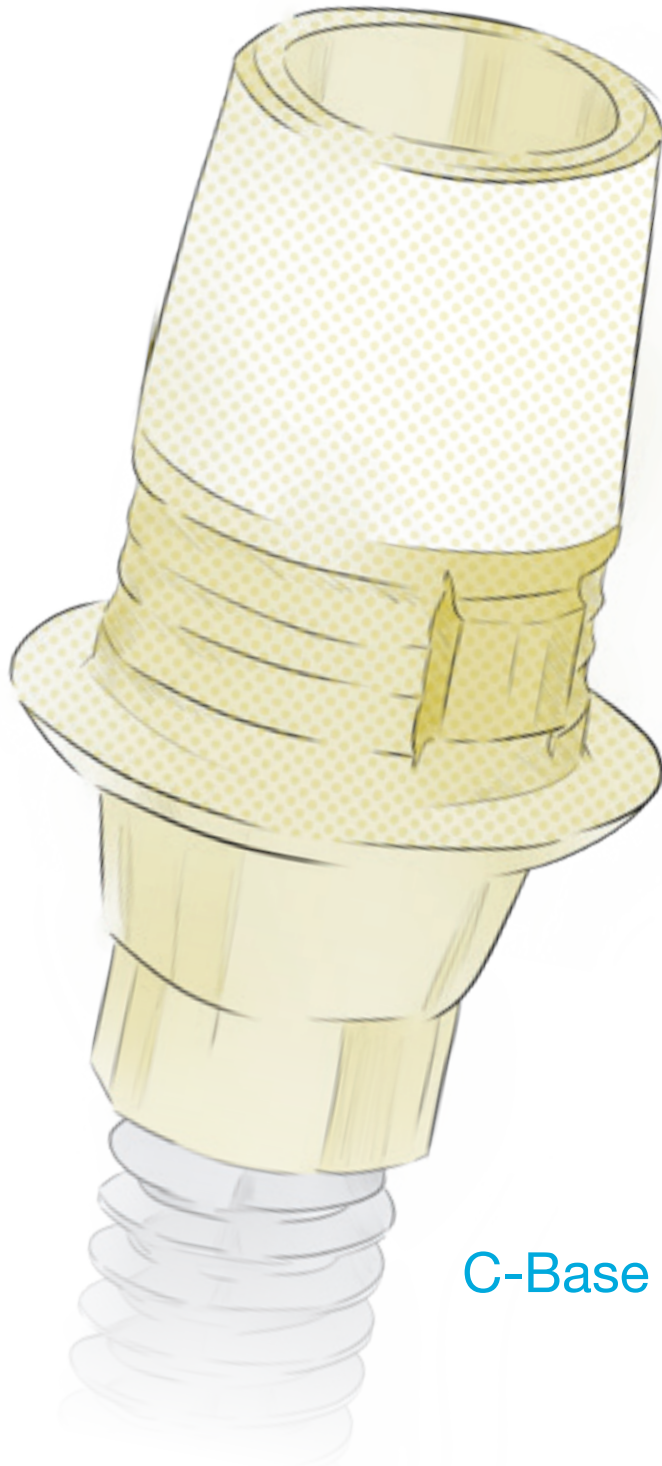




DESS

> DENTAL SMART SOLUTIONS



C-Base 2021/1



The Cerec® Sirona® system is undoubtedly one of the most complete and versatile solutions in the market.

Few solutions offer the agility the Cerec® System does, where you can go from scan to finish the piece in one session.

We create a compelling alternative that, based on the “Pure Switch” concept, would offer an improved solution to be used under the Sirona digital workflow with Sirona® libraries or available in DESS® libraries for 3Shape, Dental Wings & Exocad.

For this reason, we included slight modifications that enhance the overall properties of the product, without disrupting the usage.

These modifications can be summarized in:

- Gold anodized colour
- Multiple gingival heights
- SelectGrip® enhanced retention surface treatment
- Screw included, same as implant brand manufacturer
- Non-engaging versions

Manufactured in Titanium Grade 5 ELI, and with 15 implant compatibilities and more than 180 references, the DESS® C-Base® range is the most comprehensive offer of compatible Cerec® Ti-bases in the market.



Digital Workflow



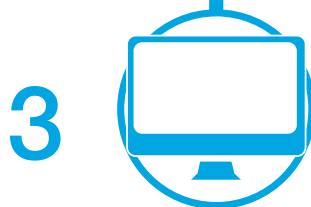
Scan either intraoral or on the model

Use either the Sirona scan post in the C-base or the “S/L” scan bodies



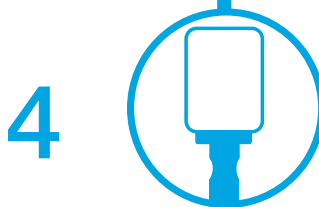
Select the Cerec® / Inlab software reference

To match the implant connection & platform compatibility¹

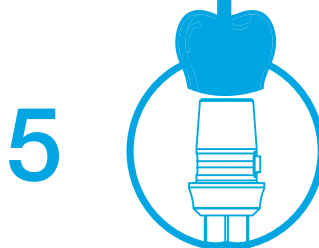


Follow the Sirona® CAD Software instructions

Design your restoration as per your needs



Use the “S/L” Blocks to mill your abutment

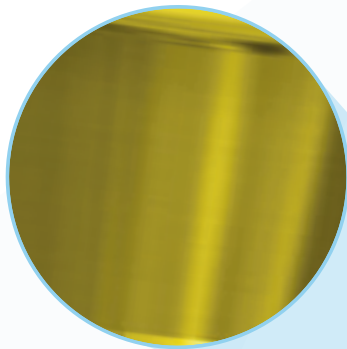


Cement the zirconia mesostructure to the C-Base

Reengineered to perfection

Improved aesthetic finish

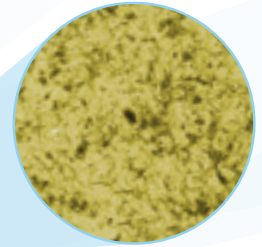
Gold Anodized colour.



DESS® C-Base includes final screw

Identical to the Implant brand screw.





*Microscope view

Engaging or
non-engaging

SelectGrip®
surface treatment
enhancement, improves
overall retention up to
500%.



Multiple Gingival Heights

Up to 3 different alternatives.



NobelActive® & NobelReplace® CC

Active Hex



		NP PURPLE 3.5	RP YELLOW 4.3-5.0	WP
0,8mm	●	58.041	58.042	
3,0mm	●	58.041/3	58.042/3	
0,8mm	●	59.041	59.042	
3,0mm	●	59.041/3	59.042/3	
Replacement Screw		19.027	19.030	

NobelReplace Select™

Tri-lobe



		PURPLE 3.5	YELLOW 4.3	BLUE 5.0	6.0
0,4mm	●	58.004		58.006	58.097
0,5mm	●		58.005		
1,5mm	●	58.004/2	58.005/2	58.006/2	
3,0mm	●	58.004/3	58.005/3	58.006/3	
0,4mm	◀	59.004		59.006	59.097
0,5mm	◀		59.005		
1,5mm	◀	59.004/2	59.005/2	59.006/2	
3,0mm	◀	59.004/3	59.005/3	59.006/3	
Replacement Screw		19.004	19.005	19.005	19.005

Nobel Brånemark®

External Hex Universal



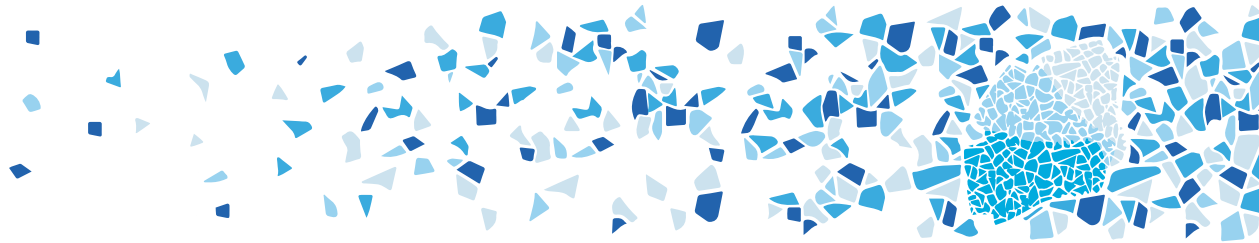
		3.5	4.1
1,5mm	●	58.001/2	58.002/2
3,0mm	●	58.001/3	58.002/3
0,6mm	●	59.001	59.002
1,5mm	●	59.001/2	59.002/2
3,0mm	●	59.001/3	59.002/3
Replacement Screw		19.027	19.028

3i Osseotite®

External HEX USA



		PURPLE 3.4	BLUE 4.1	YELLOW 5.0
1,5mm	●	58.011/2	58.012/2	58.013/2
3,0mm	●	58.011/3	58.012/3	58.013/3
0,6mm	●	59.011	59.012	59.013
1,5mm	●	59.011/2	59.012/2	59.013/2
3,0mm	●	59.011/3	59.012/3	59.013/3
Replacement Screw		19.034	19.034	19.034



3i Certain®
Internal HEX "CLICK"



		NP PURPLE 3.4	RP BLUE 4.1	WP YELLOW 5.0
0,4mm	●	58.014	58.015	
0,5mm	●			58.016
1,5mm	●	58.014/2	58.015/2	58.016/2
3,0mm	●	58.014/3	58.015/3	58.016/3
0,4mm	●	59.014	59.015	
0,5mm	●			59.016
1,5mm	●	59.014/2	59.015/2	59.016/2
3,0mm	●	59.014/3	59.015/3	59.016/3
Replacement Screw		19.011	19.011	19.011

Straumann® Soft Tissue Level & synOCTA®
Octagon



			RN 4.8	WN 6.5
1,0mm	●		58.009	
1,2mm	●			58.045
1,0mm	●		59.009	
1,2mm	●			59.045
Replacement Screw			19.026	19.026

Straumann® Bone Level
Conical BL



		NC 3.3	RC 4.1
0,7mm	●	58.043	58.044
3,0mm	●	58.043/3	58.044/3
0,7mm	●	59.043	59.044
3,0mm	●	59.043/3	59.044/3
Replacement Screw		19.032	19.033

Zimmer Screw-vent®
Internal Hex USA



		NP GREEN 3.5	RP PURPLE 4.5	WP YELLOW 5.7
0,5mm	●	58.017	58.018	58.019
1,5mm	●	58.017/2	58.018/2	58.019/2
3,0mm	●	58.017/3	58.018/3	58.019/3
0,5mm	●	59.017	59.018	59.019
1,5mm	●	59.017/2	59.018/2	59.019/2
3,0mm	●	59.017/3	59.018/3	59.019/3
Replacement Screw		19.012	19.012	19.012

Astra Tech implant system™ EV
Conic EV



		PURPLE 3.6	YELLOW 4.2	BLUE 4.8
1,0mm	●	58.059	58.060	58.061
3,0mm	●	58.059/3	58.060/3	58.061/3
1,0mm	●	59.059	59.060	59.061
3,0mm	●	59.059/3	59.060/3	59.061/3
Replacement Screw		19.059	19.060	19.061

Astra Tech Osseospeed™
Internal Hex Conic



		AQUA 3.5-4.0	LILAC 4.5-5.0
0,8mm	●	58.024	
0,9mm	●		58.025
3,0mm	●	58.024/3	58.025/3
0,8mm	●	59.024	
0,9mm	●		59.025
3,0mm	●	59.024/3	59.025/3
Replacement Screw		19.016	19.017

Dentsply Friadent Xive®
Internal Hex FD



		SILVER 3.4	YELLOW 3.8	BLUE 4.5	RED 5.5
0,3mm	●	58.038	58.039		
0,6mm	●			58.040	58.071
1,5mm	●	58.038/2	58.039/2	58.040/2	58.071/2
3,0mm	●	58.038/3	58.039/3	58.040/3	58.071/3
0,3mm	●	59.038	59.039		
0,6mm	●			59.040	59.071
1,5mm	●	59.038/2	59.039/2	59.040/2	59.071/2
3,0mm	●	59.038/3	59.039/3	59.040/3	59.071/3
Replacement Screw		19.024	19.024	19.024	19.024

Dentsply Ankylos® C/X

Internal ANK



1,4mm	●	58.050
2,5mm	●	58.050/2
1,4mm	○	59.050
2,5mm	○	59.050/2
Replacement Screw		19.046

OSSTEM® TS

Conic OSS



		Mini	STD
		YELLOW mini	GREEN regular
1,0mm	●	58.072	58.073
3,0mm	●	58.072/3	58.073/3
1,0mm	●	59.072	59.073
3,0mm	●	59.072/3	59.073/3
Replacement Screw		19.072	19.073

CONELOG®

Internal CON



		NP	RP	WP
		SILVER 3.3	YELLOW 3.8/4.3	BLUE 5.0
1,0mm	●	58.074	58.075	58.076
2,1mm	●	58.074/2	58.075/2	58.076/2
1,0mm	●	59.074	59.075	59.076
2,1mm	●	59.074/2	59.075/2	59.076/2
Replacement Screw		19.052	19.052	19.053

BioHorizons® Internal

Internal Hex BH



		NP	RP	WP
		YELLOW 3.5	GREEN 4.5	BLUE 5.7
0,5mm	●	58.087	58.088	58.089
3,0mm	●	58.087/3	58.088/3	58.089/3
0,5mm	●	59.087	59.088	59.089
3,0mm	●	59.087/3	59.088/3	59.089/3
Replacement Screw		19.043	19.043	19.043

			PRODUCT REFERENCES								
CONNECTION	SOFTWARE	GH1		GH2		GH3		SCREW	TORQUE	PLATFORM	
		○	○	○	○	○	○				
NOBEL ACTIVE® & NOBEL REPLACE® CC	L	NB A 4.5 L	58.041	59.041			58.041/3	59.041/3	19.027	35 Ncm	NP
		NB A 5.0 L	58.042	59.042			58.042/3	59.042/3	19.030		RP
NOBEL REPLACE SELECT™	L	NB RS 3.5 L	58.004	59.004	58.004/2	59.004/2	58.004/3	59.004/3	19.004	35 Ncm	NP (3.5)
		NB RS 4.3 L	58.005	59.005	58.005/2	59.005/2	58.005/3	59.005/3	19.005		RP (4.3)
		NB RS 5.0 L	58.006	59.006	58.006/2	59.006/2	58.006/3	59.006/3	19.005		WP (5.0)
		NB RS 6.0 L	58.097	59.097	58.097/2	59.097/2	58.097/3	59.097/3	19.005		6.0
NOBEL BRÅNEMARK®	L	NB B 3.4 L		59.001	58.001/2	59.001/2	58.001/3	59.001/3	19.027	35 Ncm	NP (3.4)
		NB B 4.1 L		59.002	58.002/2	59.002/2	58.002/3	59.002/3	19.028		RP (4.1)
3i OSSEOTITE™	L	B 0 3.4 L		59.011	58.011/2	59.011/2	58.011/3	59.011/3	19.034	20 Ncm	3.4
		B 0 4.1 L		59.012	58.012/2	59.012/2	58.012/3	59.012/3	19.034		4.1
		B 0 5.0 L		59.013	58.013/2	59.013/2	58.013/3	59.013/3	19.034		5.0
3i CERTAIN®	S	B C 3.4 S	58.014	59.014	58.014/2	59.014/2	58.014/3	59.014/3	19.011	20 Ncm	3.4
	L	B C 4.1 L	58.015	59.015	58.015/2	59.015/2	58.015/3	59.015/3	19.011		4.1
		B C 5.0 L	58.016	59.016	58.016/2	59.016/2	58.016/3	59.016/3	19.011		5.0
STRAUMANN® SOFT TISSUE LEVEL & synOcta®		S SO 4.8 L	58.009	59.009					19.026		RN
		S SO 6.5 L	58.045	59.045					19.026		WN
STRAUMANN® BONE LEVEL	L	S BL 3.3 L	58.043	59.043			58.043/3	59.043/3	19.032	35 Ncm	NC
		S BL 4.1 L	58.044	59.044			58.044/3	59.044/3	19.033		RC
ZIMMER® SCREW-VENT®	L	Z TSV 3.5 L	58.017	59.017	58.017/2	59.017/2	58.017/3	59.017/3	19.042	30 Ncm	3.5
		Z TSV 4.5 L	58.018	59.018	58.018/2	59.018/2	58.018/3	59.018/3	19.042		4.5
		Z TSV 5.7 L	58.019	59.019	58.019/2	59.019/2	58.019/3	59.019/3	19.042		5.7
ASTRA TECH IMPLANT SYSTEM™ EV	S	AT EV 3.6 GH1 S	58.059	59.059			58.059/3	59.059/3	19.059	25 Ncm	3.6
	L	AT EV 4.2 GH1 L	58.060	59.060			58.060/3	59.060/3	19.060		4.2
		AT EV 4.8 GH1 L	58.061	59.061			58.061/3	59.061/3	19.061		4.8
ASTRA TECH OSSEOSPEED™	L	AT OS 3.5/4.0 L	58.024	59.024			58.024/3	59.024/3	19.016	20 Ncm	3.5/4.0
		AT OS 4.5/5.0 L	58.025	59.025			58.025/3	59.025/3	19.017		25 Ncm
DENTSPLY FRIADENT XIVE®	S	FX 3.4 S	58.038	59.038	58.038/2	59.038/2	58.038/3	59.038/3	19.024	24 Ncm	3.4
		FX 3.8 S	58.039	59.039	58.039/2	59.039/2	58.039/3	59.039/3	19.024		3.8
	L	FX 4.5 L	58.040	59.040	58.040/2	59.040/2	58.040/3	59.040/3	19.024		4.5
		FX 5.5 L	58.071	59.071	58.071/2	59.071/2	58.071/3	59.071/3	19.024		5.5
DENTSPLY ANKYLOS™ C/X	S	ANKN C/ GH1 S	58.050	59.050					19.046	15 Ncm	C/X
		ANKN C/ GH2 S			58.050/2	59.050/2			19.046		
OSSTEM® TS	L	O TS 3.5 L	58.072	59.072			58.072/3	59.072/3	19.072	20 Ncm	MINI
		O TS 4.0 L	58.073	59.073			58.073/3	59.073/3	19.0737		30 Ncm
CONELOG®	S	CONELOG 3.3/x	58.074	59.074	58.074/2	59.074/2			19.052	20 Ncm	3.3
		CONELOG 3.8/x	58.075	59.075	58.075/2	59.075/2			19.052		3.8/4.3
	L	CONELOG 5.0/x	58.076	59.076	58.076/2	59.076/2			19.053		5.0
BIOHORIZONS™ INTERNAL	L	BH 3.5 L	58.087	59.087			58.087/3	59.087/3	19.043	30 Ncm	3.5
		BH 4.5 L	58.088	59.088			58.088/3	59.088/3	19.043		4.5
		BH 5.7 L	58.089	59.089			58.089/3	59.089/3	19.043		5.7

All DESS products are manufactured according to ISO 9001 and ISO 13485 with CE marking for all products Class IIb
All DESS® AURUMBase® screws and screwdrivers are based on the standard ISO 10664
3i® and 3i Certain®, Miniplant®, MicroMiniplant™ and Osseotite® are registered trademarks of 3i Implant Innovations, USA
ASTRA TECH™, OsseoSpeed™, ANKYLOS® C/X, XiVE®, FRIADENT®, ASTRATECH implant system™ EV, Cerec® , Sirona® and
UniAbutment® are registered trademarks of DENTSPLY SIRONA
BioHorizons® is a registered trademark of BioHorizons, INC.
Brånemark System®, NobelReplace® and Replace Select™, NobelActive™, NobelReplace® CC, NobelSpeedy™ and Multi-unit® are
registered trademarks of Nobel Biocare AB, Sweden
ITI®, Straumann® and synOcta® are registered trademarks of Straumann Holding AG, Switzerland
MIS® is a registered trademark of MIS Implant Technologies Ltd.
Zimmer Screw-Vent® and SwissPlus® are registered trademarks of Zimmer Dental INC, USA
Dyna® is a registered trademark of Dyna Dental Engineering BV
Locator® is a registered trademark of ZEST IP Holdings
Camlog® and Conelog® are registered trademarks of CAMLOG Biotechnologies AG
Megagen® is a registered trademark of MEGAGEN IMPLANT CO. LTD
TORX® is a trademark of ACUMENT INTELLECTUAL PROPERTIES, LLC
Bego Semados® is a registered trademark of BEGO GmbH & Co. KG
Anthogyr® is a registered trademark of Anthogyr SAS
Medentis ICX® is a registered trademark of medentis medical GmbH
Osstem® is a registered trademark of OSSTEM IMPLANT CO. LTD
Dentium® is a trademark of Dentium Co. Ltd.
GOBALD® is a trademark of Global D SASU.
Biotech Kontakt® is a trademark Biotech Dental SAS.
BTI® is a trademark BTI Biotechnology Institute.
PHIBO® is a trademark PHIBO Dental Solutions S.L.

DESS products can be used only by licensed dentists, physicians and labs.
Please refer ever to the instructions of use available on the website
www.dess-abutments.com
or supplied with the product.

Some products may not be available in your country. Some of the products are cleared for US and Canada.
Please contact your local distributor for more details.



