



Invisible below the temporary restoration



Visible during removal of excess material

fluorescent

Bifix® Temp

DUAL-CURING, COMPOSITE-BASED TEMPORARY LUTING MATERIAL

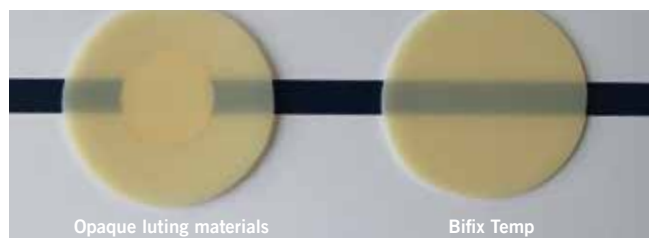


Bifix® Temp

EASE OF USE AND OUTSTANDING AESTHETICS COMBINED IN A SINGLE PRODUCT

With its tooth-like, translucent shade, Bifix Temp fluorescent blends harmoniously into the temporary restoration. The aesthetics remain unchanged in natural light and even under UV-A light, the fluorescence does not show through the temporary restoration. Under UV-A light, the material fluoresces very intensely, making it easier to detect and remove the smallest residues of material after removal of the temporary restoration and assisting in the precise placement of the subsequent permanent restoration. This advantage by itself makes the usual time-consuming finishing process more efficient.

Influence of the luting material on Structur 3



Opaque temporary luting materials can have a major effect on the aesthetics of temporary restorations being fitted. In the anterior region in particular this is a highly undesirable factor.

Clinical case



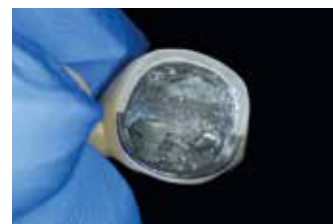
Bubble-free application with a short mixing tip in the metal-supported long-term temporary restoration



Optimum visibility of excess compared to completely transparent materials. Easy removal in one step



After removal of the temporary restoration: Remaining, clean surface of the prepared tooth



Bifix Temp remains inside the temporary restoration, coarse residues can easily be recognised and removed

Source: Prof. Dr. Jürgen Manhart, Munich / Germany

VOCO GmbH
Anton-Flettner-Straße 1-3
27472 Cuxhaven
Germany

Freecall: 00 800 44 444 555
Fax: +49 (0) 4721-719-140

info@voco.com
www.voco.dental

Available from:

