



MICHELL GYRODEC SE/TECNOARM A £1,800

Outwardly this deck has changed little since its introduction no less than thirty years ago (!), but under the surface, steady upgrades have ensured that it remains competitive. Indeed, any Gyro ever made can be returned to the factory to be brought bang up to date....

The signature feature of the GyroDec is, of course the acrylic/vinyl platter with its underslung revolving weights that add mass and inertia. Spinning on an oil-pumping inverted bearing, this platter is driven by a DC motor and the whole turntable subchassis is suspended. The 'SE' denotes a 'Spider Edition' and refers to the fact that the deck comes without its large and imposing Acrylic base and dustcover. These can be reinstated using an upgrade kit but Michell also offer the UniCover to keep dust out. Every part of the deck is immaculately finished but, be warned, there are quite a few parts and they all come separate in the box. The instructions are clear and concise but assembly is most definitely required!

The Tecnoarm is possibly the most famous incarnation of the modified Rega RB250 and is certainly one of the most comprehensive. Featuring a bead blasted and perforated arm tube with internal damping, a re-machined headshell, silver litz wiring in a continuous run from cartridge tags to phono plugs and the Michell Tecnoweight for the application of tracking force, no corners have been cut in modding this venerable design.

SOUND QUALITY

The first thing that strikes you when listening to the latest GyroDec is the staggering soundstage width. Like pressing the 'stereo wide' button on an eighties ghettoblaster, my speakers suddenly seemed to have moved about six feet further apart! What is even more impressive is that this is not accompanied by a blurring of focus in the centre; at no point does it seem like everything has been stretched too far and, in fact the Gyro SE was the only deck in the test to really put the backing bass drum behind Caro Emerald smack bang in the middle of the performance.

Helping things along immensely is the deck's wonderful sense of

overall cohesion. From the low bass to the high treble, everything about the Gyro SE is perfectly balanced and effortlessly musical performer, offering an almost disdainful sense of ease and effortlessness whether whispering out some solo acoustic guitar or hammering out a pounding dance beat.

The Gyro SE achieves this feat by simply not doing much wrong in any area. Bass may lack the last ounce of the SRM Tech's punch, but is still deep, tuneful and taut; the midrange is detailed, precise and yet blessed with an underlying fluidity. At the top end, treble is perfectly balanced between crispness and smoothness. The resulting overall performance is utterly captivating.

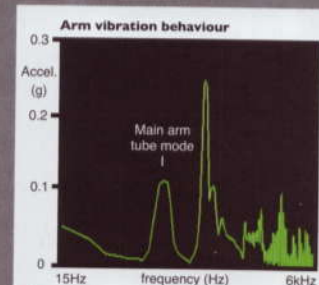
MEASURED PERFORMANCE

The modified Rega arm has a first bending mode at a high 260Hz, meaning it is stiff and incompressible, as this is a high value. A third order bending mode can be seen as a tall, narrow peak at 720Hz. Above this frequency there is less energy than usual from a Rega based arm and it is here that the structural modifications appear to have worked. High frequency headshell and tube modes are also well controlled on this arm. Overall, even though the tube could be better damped to lessen the main bending mode, this Rega looks strong.

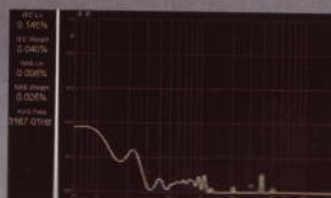
Speed error of the Gyro SE turntable measured +0.5%, not perfect Speed stability (wow and flutter) measured a very low 0.145% unweighted and 0.04% IEC weighted, so the Gyro SE is speed stable. NK

Speed accuracy	+0.5%
Wow & flutter	0.145%
Wow & flutter (IEC weighted)	0.04%

ARM VIBRATION



WOW & FLUTTER



VERDICT

Style, heritage and above all sound, this evergreen classic really does have it all.

MICHELL GYRODEC SE/TECNOARM A £1,800
J.A. Michell Engineering
☎ +44 (0)208 953 0771
www.michell-engineering.co.uk

FOR

- superb soundstage width
- musical focus
- rhythmic alacrity
- glorious detailing

AGAINST

- fussy assembly process