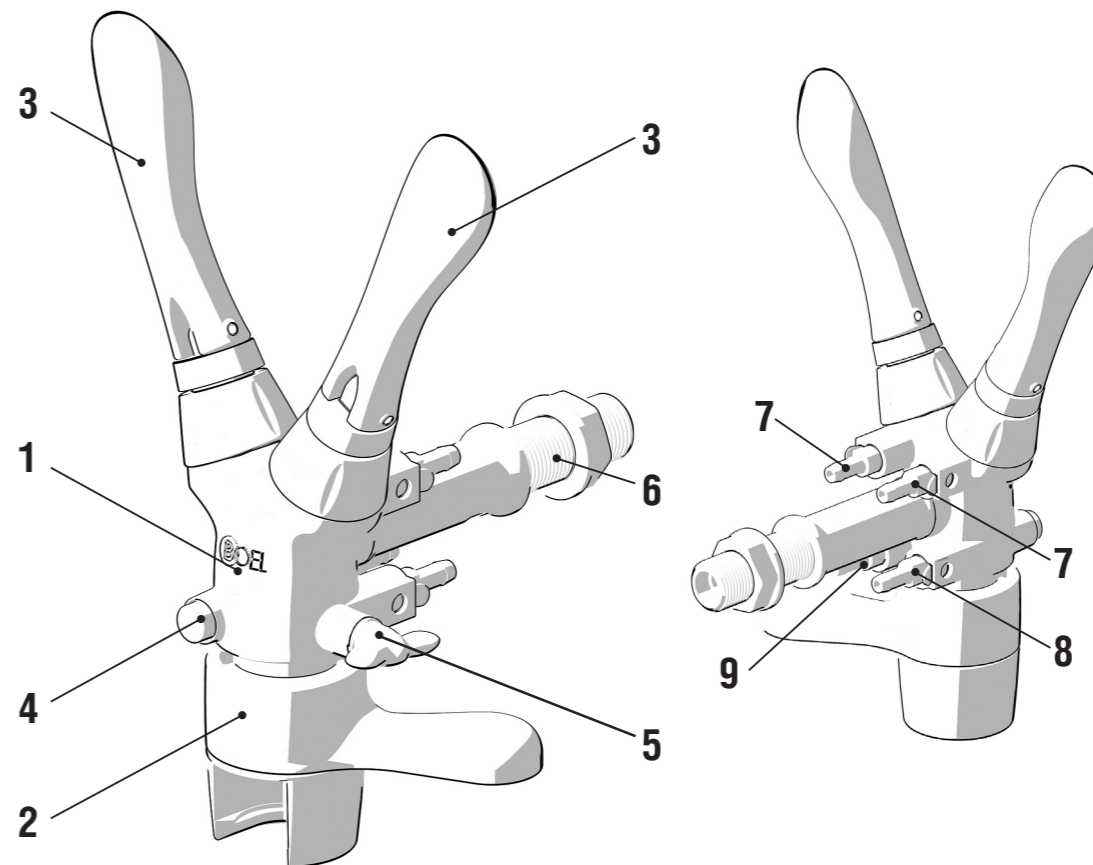




TECHNOLOGIES

The User Manual for the non-foaming dispensing device iTap 2X

1 iTap 2X Appearance

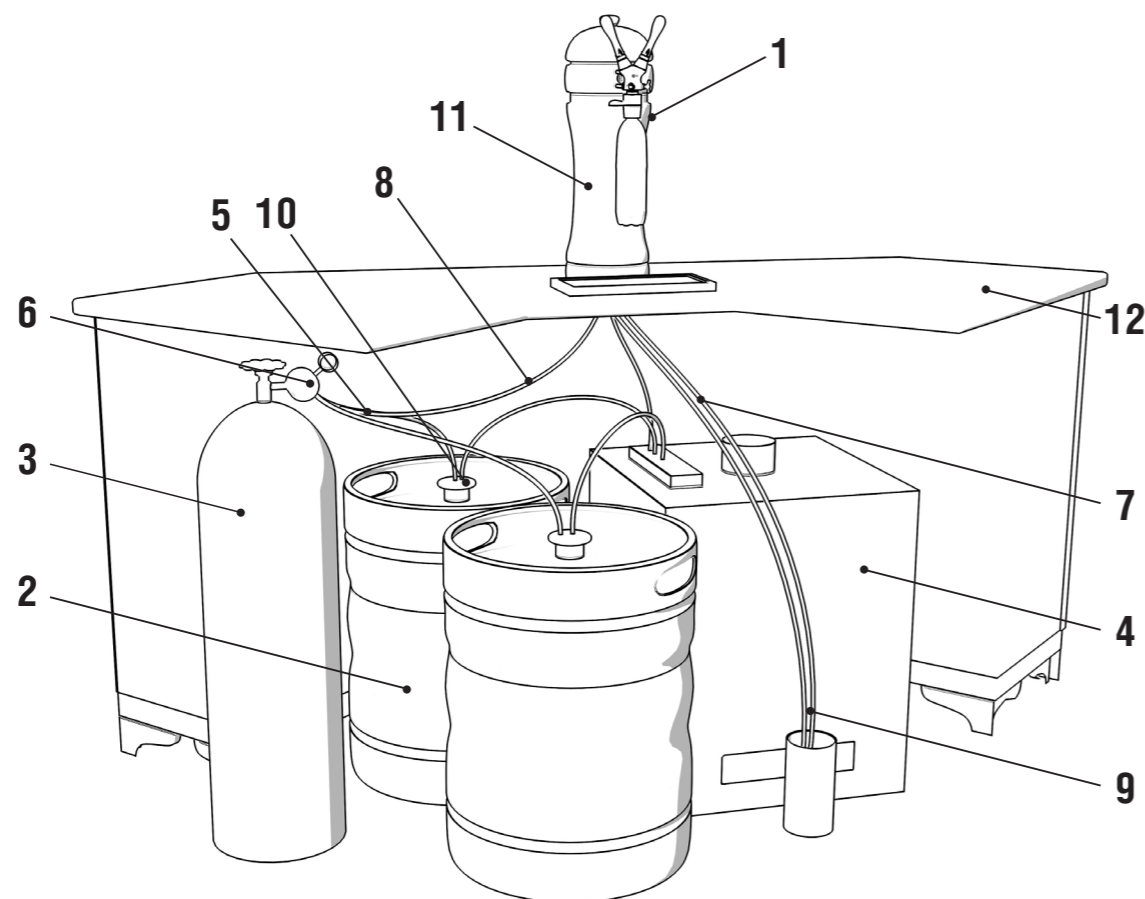


- 1 – Body
- 2 – Clamp-lock
- 3 – Handle for beverage serving
- 4 – CO₂ feed button
- 5 – Throttle knob
- 6 – Fitting 5/8" BSP
* In the model iTap 2X Fitting 5/8" BSP is used as a fixing pipe
- 7 – Drink supply nipple
- 8 – CO₂ supply nipple
- 9 – Drain nipple

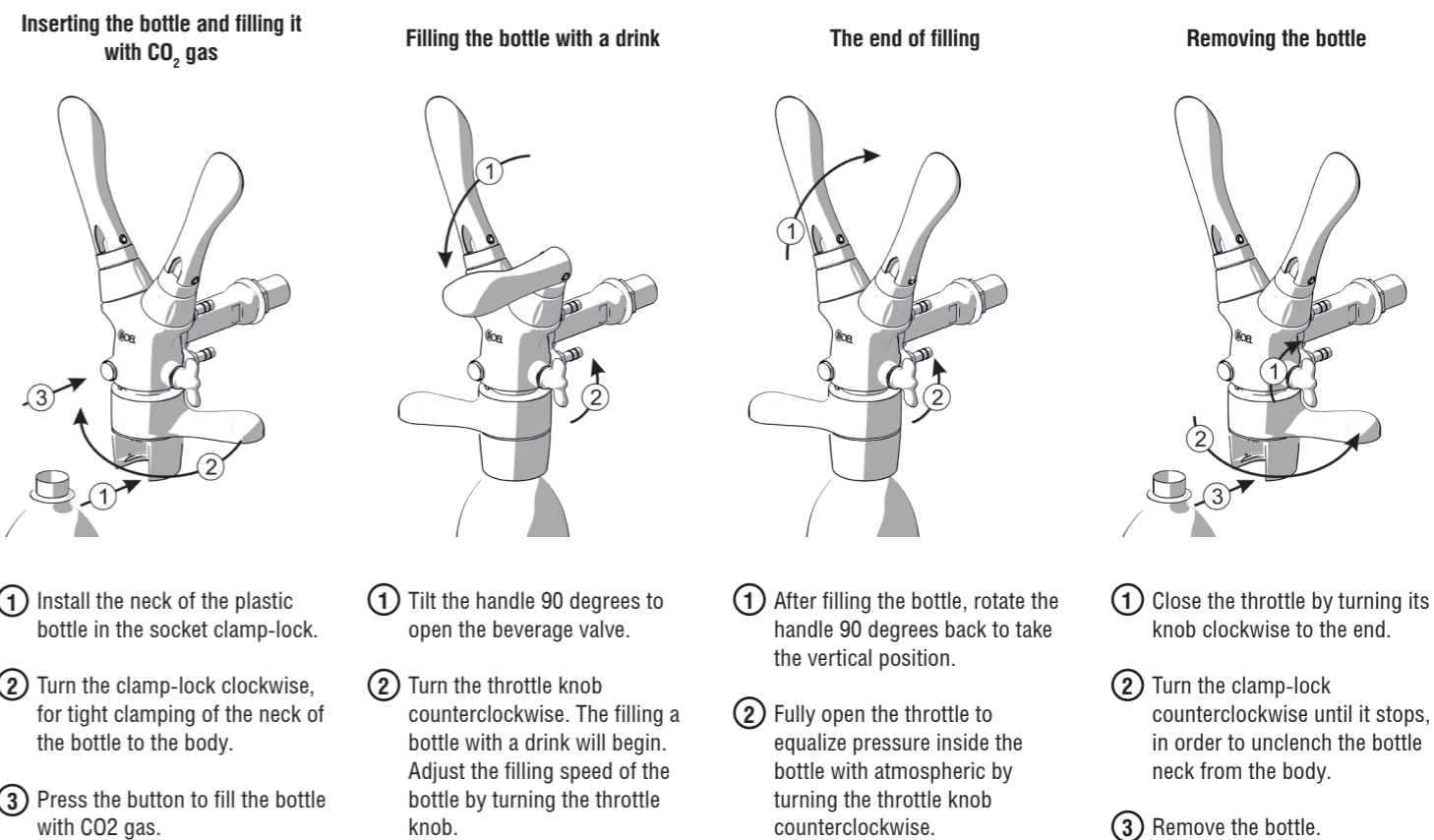
iTap 2X filling device is designed for rapid filling of foaming beverages from pressure vessels into plastic bottles with neck of PCO 1810/1881 or BPF standards.

2 Connection diagram of the iTap 2X device

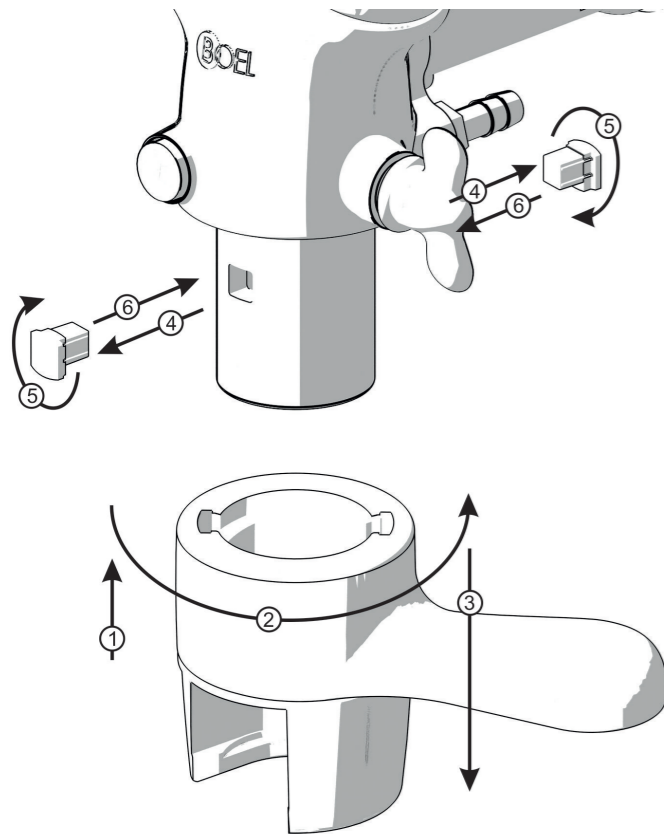
- 1 - iTap 2X device
- 2 - Keg with the beverage
- 3 - CO₂ cylinder
- 4 - Beverage cooler
- 5 - Tee connector
- 6 - CO₂ regulator
- 7 - Beverage supply hose
- 8 - CO₂ supply hose
- 9 - Drain hose
- 10 - Dispensing coupler
- 11 - Beverage font
- 12 - Bar desk



3 Sequence of actions for dispensing



4 Adjusting the height of the clamp-lock



If necessary, the filling device has a clamping mechanism adjustment of the bottle neck from the standard.
For this:

- ① Move the clamp-lock body vertically upward until it stops.
- ② Turn it counterclockwise until it stops.
- ③ Remove by moving down as shown in the figure.
- ④ Remove the end-stop part.
- ⑤ Flip the end-stop part.
- ⑥ Insert the end-stop part into place.

Install clamp-lock body in starting position (installation clamp-lock body opposite of removal ③ ② ①).

* End-stop part can be installed as from the front, as from the back of the iTap Body.

5 iTap 2X dispensing device maintaining

Employees who have studied this manual and passed safety instructions how to work with the equipment for beverages bottling are allowed to service the device.

Kind of processing	Periodicity	Means for processing	Time (min.)	t (°C)	Source of working solution
Cleaning	Once a day (in the end of the day)	water	10	60	Water pipes
Rinsing		water	15	20	Water pipes
Disinfection	1 time per week	Neomoscan Sepa, Divo Cip or a similar liquid used for food equipment disinfection	10-15	60	Cleaning kegs
Rinsing	After disinfection	water	10	40-60	Water pipes
Rinsing		water	15	20	Water pipes

Technology of washing iTap 2X.

Daily, according to the Sanitary rules for brewing and non-alcoholic industry, the dispensing device must be washed for 30 minutes with hot (60°C) and cold water.

Weekly, it is necessary to disinfect the device with antiseptics (Antiforminum, Calcium hypochlorite) and then rinse thoroughly with water to remove disinfectant.

Precautionary measures

To ensure the smooth operation of the device, it is necessary to observe some rules of work with it:

- The packaging used must comply with sanitary and hygienic requirements for food packaging. Containers must be clean and free from visible defects.
- The device must be serviced regularly.
- Do not set the unit to a higher pressure 0.4 MPa = 4.0 Bar = 58.02 psi.
- The O-rings pos.17 and 19 need to lubricate with food grade silicone grease.

6 iTap 2X dispensing device specification

Pos.	Code	Name	Pos.	Code	Name
1	AP-22.00.001	iTap 2X body	14	AP-01.00.032	O-ring
2	AP-21.00.002	Throttle screw	15	AP-01.00.034	O-ring
3	AP-21.00.003	Nipple	16	AP-01.00.036-01	O-ring
4	AP-01.04.000	Clamp-lock body	17	AP-21.00.031	O-ring
5	AP-01.09.001	Plastic shank	18	AP-01.02.001	Handle stock
6	AP-01.09.002	Nut 5/8" BSP	19	AP-01.02.002	Seal
7	AP-01.00.001	Helical torpedo	20	AP-01.02.003	Valve seal
8	AP-01.00.002	CO ₂ feed button	21	AP-01.02.004	Bushing
9	AP-01.00.004	Sealing ring	22	AP-01.02.005	Ring
10	AP-01.00.007	End-stop part	23	AP-01.02.006	Cover
11	AP-01.00.008	Stock of CO ₂ filling line	24	AP-01.02.007	Decorative nut
12	AP-01.00.011	Spring of CO ₂ filling line	25	AP-01.02.008	Handle
13	AP-01.00.031	O-ring	26	AP-01.02.009	Spring
			27		Pin DIN 7 4x28-St

The size and location of holes for the installation of iTap 2X

Attention! Thread 5/8" is made of ABS plastic.
Tightening torque (allowable effort) no more than 8-10 N*m.