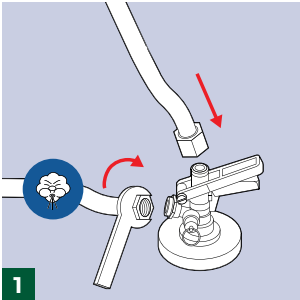


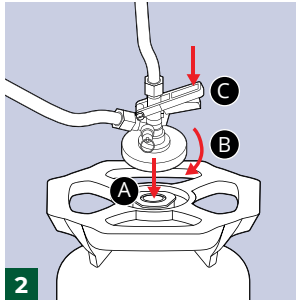
Instructions DSI Coupler, KeyKeg-K

Connecting & troubleshooting



1

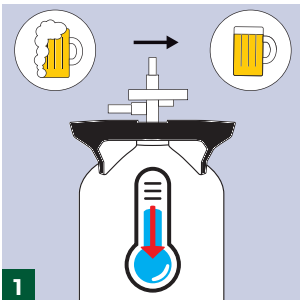
CONNECTING



2

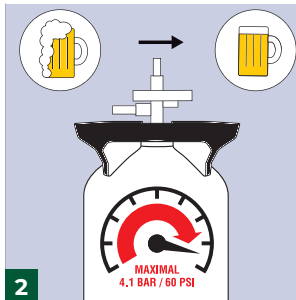


How to connect a KeyKeg



1

TROUBLESHOOTING



2



Too much foam?
Here's what to do.

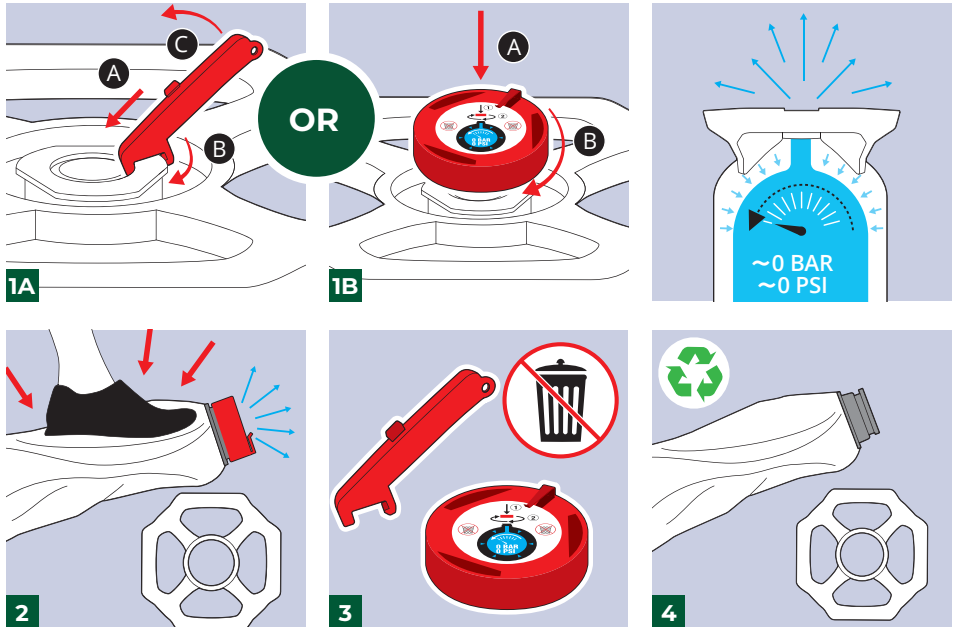


questions@keykeg.com



Instructions DSI Coupler, KeyKeg-K

After use



How to prepare
a KeyKeg for
recycling



questions@keykeg.com

